



# MISSISSIPPI CHESS ASSOCIATION

A USCF affiliated organization dedicated to the support of Chess in Mississippi

MISSISSIPPI CHESS LETTER

Vol 1

Number 6

May 74

President: Peyton Crowder, Drawer EB, Miss State 39762  
Vice President: Bill McDonald 3585 Lanell Lane, Pearl 39208  
Secretary: John Masters, 1583 Genie Fairway, Greenville 38701  
Treasurer: Jay Gilbert, 719 Launcelot Rd., Jackson, 39206  
Parliamentarian: Judson Farmer, 1229 Lynnwood Dr, Jackson 39206  
Editor: Warren Porter, Unk.

This is scheduled to be the last issue of our first year. For those unfamiliar with the MCA, this is the statewide chess organization recognized by the US Chess Federation. Its purposes are to maintain a system of qualification to the State Championship and running it, the encouragement of tournaments and other forms of chess activity, and the regular publication of a newsletter. Membership (\$3/year or \$2/year under 20 years) may be purchased by sending a check to our treasurer or when a player participates in any event sponsored by a chess club which recognizes the MCA. Our current membership is around 200.

This issue is being mailed to all USCF members in the state. The extra cost will be charged to the organizers of the Miss-Lou Open and Miss Congress who requested it.

Do not send any materials to the editor or the postal chess director during June. A new postal director will be appointed at the Chess Congress in Jackson.

Make plans now to attend the Miss-Lou Open (June 1-2) and the Miss. Chess Congress (June 28-30). The high cash prizes plus support by Louisiana chess-players has always insured a large powerful turnout for this annual event. Many qualifying points and rating points are in Natchez, waiting to be won. The annual business meeting of the MCA will be held on June 28 in Jackson.

Affiliated with the UNITED STATES CHESS FEDERATION

ADDITIONAL INFO CONTACT:  
Jerry Krouse, P.O. Bcx  
1003, Natchez, 39120.

TWO IMPORTANT TOURNAMENTS  
COMING UP IN NATCHEZ

INFO BY PHONE CONT  
Jerry Krouse, 442-  
7781 (day) 442-536

1. THE MISS - LOU OPEN

(MAY 31), JUNE 1 &

The Miss-Lou Open is one of the longest running tournaments in this area of the south, and one of the largest, usually averaging over 50 entrants. This year should be the largest of them all! Remember, this is the next to last tournament in which championship qualifying points can be won, and all the contenders for the state title will most likely be here trying to nail down a few. Because of the large field expected, there will be a lot of QP awarded.

DETAILS ARE: 5-SS, 45/2, Eola Motor Hotel, 7th floor, Main & Pearl Streets, Natchez, Mississippi 39120. EF: \$12, jrs. \$10, MCA membership required (\$3, jrs. \$2). MCA Championship qualifying tournament. \$100 first prize, \$50 second prize, \$10 each to 1st in A,B,C,D, E, Trophies to 1st and 2nd overall, top two in A,B,C, and top in D,E, UNRATED. Registration from 8:30-9:45 Saturday June 1. Rounds are 10, 3, 8 on Saturday and 8, 1 on Sunday. SPEED CHESS TOURNAMENT Friday night at 8:30, no entry fee, 1st prize free entry into MISS-LOU OPEN. ADDITIONAL PRIZES at Miss-Lou: Upset Prize (book), Brillancy Prize (book), Best performance in 1st Tournament (book), Shortest Game (book).

A word about the Eola Hotel: The Eola is old, but clean, with excellent food, and reasonable rates. The Eola has been a friend to chess through the years, never charging a dime for use of their room. The Mississippi Open, described below, will be held in one of the newer motels of Natchez, so please give the Eola your business for the Miss-Lou. Don't let an old friend down!

2. THE MISSISSIPPI OPEN

AUGUST 2, 3, &

INCORPORATING THE FOLLOWING: (A) THE STATE CHAMPIONSHIP PLAY-OFF  
(B) THE STATE SPEED CHESS CHAMPIONSHIP  
(C) THE MISSISSIPPI OPEN

This will be Mississippi's most fabulous chess weekend of the year, and will be held at the Prentiss Motel - modern, with pool, restaurants, lounges, entertainment, etc. A skittle or analyzing room will be retained next door to the tournament room for your convenience and to maintain a proper amount of decorum during games.

DETAILS FOR THE MISSISSIPPI OPEN ARE: 5-SS, 45/2, Prentiss Motel, highway 61 south, Natchez, Miss. 39120. EF \$12, jrs. \$10, MCA membership required (\$3, jrs. \$2). \$100 first prize, \$50 second prize, \$10 each to 1st in A,B,C,D,E. Trophies to 1st and 2nd overall, top two in A,B,C, and top in D,E, UNR. Registration from 8:30-9:45 Saturday Aug. 3. Rounds are 10, 3, 8 on Saturday and 8, 1 on Sunday. ADDITIONAL PRIZES at the Mississippi Open: Upset Prize (book), Brillancy Prize (book), Shortest Game (book).

The State Speed Chess Championship will start Friday night, August 2, at 8:30. There will be no entry fee, and a trophy will be awarded to the best speed player in the state.

The State Championship Play-Off, will consist of the current Champion, Warren Porter, and the 5 persons present who have accumulated the most QP's during the tournament season. A legal contender cannot forfeit his right to play for the State Championship in order to get into the Mississippi Open. The play-off will be a round-robin, and the winner is awarded the State Championship trophy. Additional prizes will be searched for. SEE YOU IN NATCHEZ

## Games From Laurel

Carter-Farris 1 P-Q4 P-Q4 2 N-QB3 N-KB3 3 P-KN3 P-K3  
 (We are inclined to disagree with this move. Compare  
 the opening 1 P-Q4 P-Q4 2 P-QB4 P-QB3 3 N-QB3 B-B4?  
 4 PxP PxP 5 Q-N3! In this game White can't exploit the  
 absence of Black's QB from the Q-side and 3 ... B-B4  
 should have been played to restrain P-K4 for White.  
 There are few cases where a player could play P-QB4  
 (either Black or White) and not be able to get it  
 back in the opening if it were not supported.) 4 B-N2  
 P-B4 5 P-K4 PxKP 6 NxP NxN 7 BxN PxP 8 N-B3 N-B3 9 00  
 B-K2 10 B-B4 B-B3 11 P-B3 P-K4 12 BxN+ PxB 13 BxP BxB  
 14 NxN 00 15 NxQBP Q\*N3 16 NxQP QxP 17 Q-Q3 Q-N3 18  
 Q-N5 B-R3 19 QxQ PxQ 20 KR-N1 B-B5 21 P-QR4 R-R3 22  
 N-N5 R-N1 23 N-Q6 B-K3 24 P-R5 K-B1 25 P-QB4 K-K2  
 26 P-B5 K-Q2 27 RPxP RxR 28 RxR K-B3 29 R-R5 P-N3  
 30 P-N7 B-Q4 31 P-R4 K-B2 32 P-B4 P-B4 33 K-B2 BxP  
 34 K-K3? (34 R-R7 & trade off all pieces. The c pawn  
 will hold the Black King while the WK goes after the  
 K-side Pawns.) R-QR1 35 RxR BxR 36 K-Q4 K-Q2 37 N-B7  
 B-K5 38 N-N5 B-N7 39 NxP K-K2 40 K-K5 BpB3 41 N-N5 B-N7  
 42 N-K6 B-R8 43 N-Q4 B-N7 44 NxP PxN 45 KxP K-B2  
 46 P-N4 B-B3 47 P-N5 B-R5 48 P-R5 B-B7+ 49 K-K5 K-K2  
 50 P-N6 K-B1 51 P-B6 K-K2 52 P-B7 K-Q2 53 P-N7 B-R2  
 54 P-B5 B-N1 55 K-B6 KxP 56 K-K7 K-B3 57 P-B6 1:0

Hedman-Scott 1 P-K4 P-QB4 2 N-KB3 P-Q3 3 PxQ4 PxP 4 NxP  
 P-K4 5 N-N3 N-KB3 6 N-B3 P-KR3 7 B-QB4 QN-Q2 8 00 P-QR3  
 9 N-Q5 P-QN4 10 NxN+ NxN 11 B-Q5 NxN 12 QxN B-K3 13 Q-B6+  
 14 Q-B3 R-B1 15 Q-Q3 B-B3 16 P-KB4 P-B3 17 P-B5 P-Q4  
 18 PxP QxP 19 QxQ BxQ 20 B-K3 RxP 21 R-B2 RxR 22 KxR  
 B-K2 23 B-B5 BxN 24 BxB KxB 25 PxB R-R1 26 K-K3 R-R2  
 27 K-K4 K-Q3 28 P-QN4 P-KR4 29 P-R3 R-R1 30 P-N4 PxP  
 31 PxP K-B3 32 R-R3 K-N3 33 R-Q3 R-R2 34 P-N5 R-QB2  
 35 R-Q6+ K-N2 36 PxP PxP 37 RxBP R-B5+ 38 KxP RxP 39 R-B7+  
 K-N3 40 R-Q7 RxP 41 P-B6 K-R4 42 P-B7 R-KB7 43 K-K6 K-R5  
 44 R-Q8 P-N5 45 P-B8=Q RxQ 46 RxR P-N6 47 R-QN8 P-R4  
 48 K-Q5 K-R6 49 K-B4 P-R5 50 K-B3 K-R7 51 R-N4 (R-N7!)  
 K-R6 52 R-N5 (R-R4 P-N7 53 R-QN4) K-R7  $\frac{1}{2}:\frac{1}{2}$  Black could  
 have obtained better chances by forcing the WK to the  
 back rank before taking the f Pawn (or new Q).

Hayes-Hedman 1 P-K4 P-K4 2 P-KB4 David Hayes did not  
 come to this tournament to hide behind a Linus Blanket  
 Opening! B-B4 3 N-KB3 N-KB3 4 P-Q4 PxQP 5 P-K5 N-K5  
 6 B-Q3 P-Q4 7 PxPep NxP 8 Q-K2+ Q-K2 9 QcQ+ KxQ 10 00  
 P-KB4 R-K1+ B-K3 12 N-N5 N-K5 13 NxN PxN 14 RxP K-B3  
 15 N-Q2 N-B3 16 K-B1 N-N5 17 P-QN3 NxB 18 PxN KR-K1  
 19 B-N2 QR-Q1 20 QR-K1 K-B2 21 N-B3 B-B4 22 RxR RxR  
 23 N-K5+ K-B1 24 P-KN4 B-KN3 25 N-Q7+ K-B2 26 NxB  
 & Black resigned on the 35th move.

No report was received from the Oxford Open except that  
 the top placers in order were Krouse, Able, Gray,  
 Doredant, and Crowder.

Krouse-Greco 1 P-K4 P-KN3 2 P-Q4 B-N2 3 P-KB4 P-Q3 4 N-KN3  
 B-N5 5 B-QB4 BxN 6 PxB P-K3 7 00 N-KB3 8 N-B3 N-R4 9 B-K3  
 Q-R5 10 Q-K1 Q-B3 11 Q-Q2 B-R3 12 N-K2 R-N1 13 R-B2 N-Q2  
 14 R-N2 K-K2 15 R-KB1 QR-Q1 16 P-K5 Q-R5 17 K-R1 N-N2 18  
 R-N4 Q-R6 19 N-N1 Q-R4 20 R-N3 N-KB4 21 R-R3 N-R5 22 Q-B2  
 P-KN4 23 PxNP RxP 24 QxN QxQ 25 RxQ RxN+ 26 BxR B-N4 27 Pxp+  
 Pxp 28 RxP R-QB1 29 B-N3 N-B1 30 R-R5 B-B5 31 B-B2 N-N3  
 32 B-R4+ K-B1 33 R-KN1 B-K6 34 RxN 1:0

Farris-Rey 1 P-K4 P-K3 2 N-KB3 P-Q4 3 Pxp Pxp 4 P-Q4 B-KN5  
 5 B-K2 BxN 6 BxB N-KB3 7 0-0 B-K2 8 R-K1 P-KR3 9 B-B4 N-R3  
 10 N-B3 0-0 11 N-K2 B-Q3 12 P-B3 P-B3 13 Q-Q2 BxB 14 NxB Q-Q3  
 15 N-Q3 N-B2 16 R-K3 N-K3 17 QR-K1 N-N4 18 N-K5 NxB+ 19 RxN  
 QR-K1 20 Q-B4 Q-K3 21 R/1-K3 N-R4 22 Q-N4 QxQ 23 NxQ RxR  
 24 RxR P-KB4 25 N-K5 R-K1 26 R-B3 P-KN3 27 K-B1 K-N2 28  
 P-KN4 Pxp 29 R-B7+ K-N1 30 RxP P-N6 31 RPxp R-B1 32 K-N2  
 P-KN4 33 N-N4 N-B3 34 NxP+ K-R1 35 N-B7+ K-N1 36 NxP N-N5  
 37 P-KB4 P-R4 38 N-B3 N-K6+ 39 K-B2 N-B5 40 N-K5 N-Q3  
 41 NxP?? In a previous round an opponent saced a Knight for  
 two Pawns and went on to win with many Pawns against a  
 Bishop. In this game his opponent's Rook and Knight  
 should have been far more effective than his Bishop wasn't.  
 NxR 42 N-K7+ K-B2 43 NxP N-Q3 44 N-K3 R-QN1 45 P-N3 N-K5+  
 46 K-N2 NxP 47 N-B4 R-QR1? (Black should not waste his  
 powerful Rook guarding a measly Pawn. He has to play  
 .. NxP 48 NxP R-N4 activating his Rook. Once his Knight  
 gets back in play he should be in great shape.) 48 P-QR4  
 K-K3 49 K-B3 K-Q4?? 50 N-N6+ Black resigns on 62nd.

Rowland-Campbell 1 P-Q4 P-Q4 2 P-QB4 Pxp 3 N-QB3?! Unless  
 White is playing a bona fide gambit, he should develop the  
 other Knight. P-QR3 4 P-K3 P-QN4 (Now after 5 P-QR4 P-N5  
 will cause White to waste time.) 5 P-QN3?! Pxp 6 QxP P-K3  
 7 P-QR3 N-KB3 8 B-Q3 P-QB4 9 Q-B2 B-N2 10 N-B3 BxN 11 PxB  
 Pxp 12 N-K4 Pxp 13 Pxp B-K2 14 B-N2 0-0 15 R-KN1 QN-Q2  
 16 NxN+ NxN 17 K-K2 P-N3 18 BxB BPxB 19 RxP+ K-B2 20 RxN+  
 BxR 21 Qxp+ K-K1 22 Q-N6+ R-B2 23 Q-N8+ K-K2 24 BxB+ KxB  
 25 Q-N4 Q-Q4 26 Q-B4+ Q-B4 27 Q-R4+ Q-N4 28 Q-Q4+ P-K4 29  
 Q-Q6+ K-N2 30 K-B2 R-Q1 31 Q-N4 Q-K2 32 R-N1+ K-B1 0:1

Woodard-Hunter 1 P-K4 P-K4 2 N-KB3 N-QB3 3 B-N5 P-QR3 4 B-R4  
 N-B3 5 0-0 P-QN4 6 B-N3 N-QR4 7 P-B3 P-Q3 8 B-B2 P-QN4  
 9 R-K1 B-K2 10 P-KR3 0-0 11 P-Q4 BPxp 12 Pxp Pxp 13 NxP  
 Q-B2 14 N-Q2 B-N2 15 N-B3 R-K1 16 N-B3 R-K1 17 N-N3 N-B3  
 18 B-N5 N-Q2 19 N-B5 P-B3 20 B-N3+ K-R1 21 B-KB4 N/Q-K4  
 22 R-QB1 Q-Q2 23 N/3-Q4 NxN 24 QxN N-B3 25 Q-Q3 B-K2 26  
 Q-N3 B-KB1 27 N-R6 N-Q1 28 N-N8 N-B2 29 NxP Pxn 30 Q-R4 B-N2  
 31 B-B2 N-K4 32 B-R6 BxB 33 QxB Q-N2 34 Q-Q2 N-B6+ 0:1

Reeves-Rowland 1 P-KN3 N-KB3 2 B-N2 P-Q4 3 P-Q3 P-K3 4 N-Q2  
 P-B4 5 P-QB4 P-Q5 6 KN-B3 N-B3 7 0-0 B-Q3 8 R-K1 P-KR3  
 9 R-N1 0-0 10 N-B1 P-K4 11 Q-B2 R-K1 12 P-QN4 NxP 13 Q-N3  
 P-K5 14 N/3-Q2 Pxp 15 P-K4 Pxp 16 NxP N-N5 17 B-N2 NxN  
 18 RxN RxR 19 Pxr Q-N4 20 N-B1 P-KR4 21 R-K1 P-R5 22 B-B1  
 Pxp 23 Q-R4 Pxp+ 24 K-R1 B-R6 25 BxB Q-N8 X

Karpov beat Spassky while Korchnoi beat Petrosian 3-1. Petrosian with-  
 drwe on account of illness, 3 games had been postponed. -USCF

Last article I touted the idea of learning open games first, stating that most closed games were just maneuvering for the open game that must come if either side really wants to win. Here is a game from the recent Laurel Open illustrating that point:

J. Krouse(1858) - Brian Wiggins(1907)  
Pirc-Robatsch (Hippopotamus Variation?)

1 P-K4 P-KN3 2 P-Q4 B-N2 3 N-QB3 P-Q3  
4 P-KB4 P-QN3?! 5 N-KB3 B-N2 6 B-K3  
N-Q2 7 P-K5 (Black was surely planning on getting a foothold in the center by ...P-K4) 7...P-K3 8 B-QB4 (White invites ...P-Q4 as both black Bishops will lack scope) 8...P-Q4 9 B-N3 (9 B-Q3 or K2 looks more logical at first sight, but on either there is the possibility of black exchanging his bad white squared bishop for white's good one, after some such as 9 B-Q3 P-QR4 10 O-O B-QR3!) 9...N-K2 10 Q-Q2 P-QR3 (This means that Black wants 11...P-QB4 but has to keep White from playing N-N5-Q6) 11 N-K2 P-QN4? (Black gives up the attack on the base of White's pawn chain by ...P-QB4) 12 P-QR4 N-N3 13 PXP PXP 14 RxB QxR 15 O-O N-B5 16 Q-B1 N-B4 17 B-B2 P-KR4 (To keep White from driving the knight off the excellent outpost by P-KN4) 18 P-QB3 B-QR3 (In line with our article, here we should reflect on the position. Note the extreme closed nature, with interlocking pawn chains, bishops hidden behind pawns, etc. Yet a quiet battle rages: Can white drive the Knights from their excellent posts, can anybody force the trade of their bad Bishop for the other good Bishop, can Black get in ...P-QN5 to good effect, does black control the open file or can White dispute this at will, how long can the Black King stay in the center, can White ever attack the base of Black's pawn chain by P-B5? Sooner or later, these unanswered questions will result in, you guessed it, an open game! 19 R-K1 Q-N2 20 N-N3 N-K2 21 N-Q2 (Driving the other Knight out was so easy, he decides to try this one) 21...B-R3 22 N-B3 (White intended 22 NxN, but saw that after 22...NPxN! 23 B-B2 O-O followed by ...R-N1 Black has all the play on the open Q-Knight file) 22...N-B3 23 B-B2 (At almost the precise moment in the game, both sides start action which should open the game dangerously. White aims at a pawn and piece sacrifice on f5 if the Black

King stays in the center. The idea is that the B-King will be exposed after White exchanges twice on f5 and then pushes P-K6! Black's Q-side action starts on the next move.) 23...P-N5 24 N-N5 P-N6 25 B-N1 B-N4 26 P-KR4 (Now White has finished preparations for 27 P-B5!, but Black presents an even more tempting target by castling into the weakened K-side) 26...O-O 27 Q-Q1! (White now shifts to the Knight sac NxRP!) 27...BxN (Does Black feel the danger? If instead 27...NxNP, then 28 QxNP N-B5 29 Q-Q1 and the threat NxRP still remains) 28 BPxB! N/3-R4 29 NxRP!! (If 29...PxN then 30 QxRP leads to mate. Now that the game is opening up, White has a tremendous, if not winning advantage. However, White has used approximately 1.50 to this point, leaving 10 minutes to make the remaining 20 moves. Black is not much better. Instead of being able to reap the rewards of his hard work, White must now resort to speed chess.) 29...NxNP 30 N-B6+ K-N2 31 Q-N4?? (It is hard to see how White could not win after 31 Q-B3!, in view of the threat N-R5+, not to mention the Queen's superior defensive posture on f3, protecting the Pawn on c3, the square d3, and the Bishop on f2.) 31.. B-Q6 (Correct, trade 'em off.) 32 BxB NxB 33 R-N1 Q-B3 34 P-R5 QxP 35 PXP PXP 36 QxKP NxB 37 KxN QxP+ (Both sides are now playing speed chess in earnest. 37...Q-B7+ would win the Rook immediately, but not alter the outcome of the game!) 38 K-N3 Q-Q6+ 39 K-B2 QxR 40 Q-K7+ R-B2 (Forced) 41 Q-K8 (Threat: 42 Q-N8 Mate. The exchange sac, 41... RxN leads a quick self mate - 42 KPxR+ etc.) 41...Q-B7+ 42 K-N3 Q-B6+ 43 K-R2 R-B8 44 Q-B7+ and a draw was agreed on with less than a minute on White's clock, and about a minute and a half on Black's. Though a Rook ahead, Black must continue to guard against White's mate threats.

So we saw that a closed game can open explosively, giving forth a multitude of tactical encounters. Practice your open games now, and be ready when these games open up.

After 23...P-N5, Black had finally obtained the strategical attack on the base of White's pawn chain. Here he pushed 24...P-N6, refusing to open the game on the Q-Side, where his pieces were massed. I think, that 24...PXP and open lines were his best chance!

Our thanks to Richard Doredant for showing us these games played by Eduardo Celorio, rated 2320, co-winner of the National Open. All notes are by Celorio; underlines have been added where a move is referred to later.

Nat Open-Mar 17-22 8 rds. 50 moves/2 hours

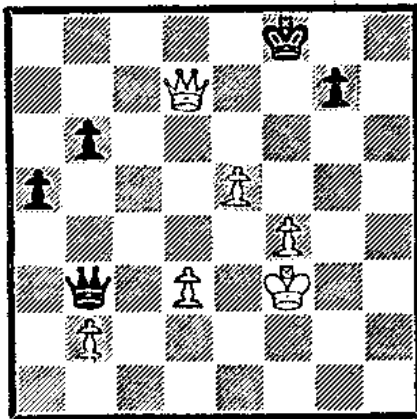
Rd 1 Board 12 C Barton - E Celorio 0-1  
 1 P-Q4 N-KB3 2 N-KB3 P-B4 3 P-K3 P-KN3 4 P-B3 P-QN3 5 B-Q3  
 B-QN2 6 QN-Q2 B-N2 7 0-0 0-0 8 P-K4 P-Q3 9 P-Q5 QN-Q2 10 R-K1  
 P-QR3 11 P-QB4 Q-B2 12 R-QN1 P-K3 13 P-QN3 N-KR4 14 N-B1 P-K4  
 15 P-QR4 P-KR3 16 N-KR4 N-B5 17 BxN? PxB 18 N-B3 P-AN4  
 19 P-KR3 QR-K1 20 N/1-R2 B-B1 21 Q-B2 P-QR4 22 R-K2 Q-Q1  
 23 QR-K1 N-K4 24 NxN BxN 25 P-B3 P-R4 26 K-R1 Q-B3 27 R-KN1  
 K-N2 28 R-QB1 R-KR1 29 R/2-K1 P-N5 30 Q-K2 PxRP 31 PxRP BxP  
 32 R-N1+ K-B1 33 Q-K1 B-Q5 34 B-B1 BxR 35 BxB BxN 36 KxB  
 R-KN1 37 B-Q7 R-N6 38 QxR PxQ+ 39 KxP Q-N4+ 40 Resigns

Rounds 2,4,5 were similar to this game, they were not very interesting although no one was giving away free points.

Rd 3 Board 12 M Dalesio - E Celorio 1-0

1 P-K4 P-K3 2 P-Q4 P-Q4 3 N-QB3 B-N5 4 P-QR3 BxN+ 5 PxB N-K2  
 6 Q-N4 P-QB4 7 B-Q3? PxKP 8 QxKP B-Q2 9 N-B3 B-B3 10 Q-N4 N-Q2  
 11 B-N5 Q-R4 12 0-0 N-B3 13 Q-R4 (-44 left) P-B5! (-33 left)  
 14 BxN PxQB 15 QxBP 0-0-0 16 B-K2 N-Q4?! 17 QxBP NxBP 18 BxP  
 KR-N1 19 K-R1!! R-N3 20 KR-K1 B-Q4? 21 BxB QxB 22 R-K5 Q-Q3  
 23 R-B5+ Resigns. Move 16 ... N-Q4? is a miscalculation. Black should play 16 ... N-KN3! 17 QxBP QR-K1 which should probably win due to threat of .. KR-B1 & ... N-KB5. I completely overlooked 19 K-R1 as I thought white was lost, in very bad time pressure (-3 left). I didn't find 19 .. K-N1 or 20..K-N1 by which things would still have been somewhat unclear; although Black is material down, he is practically two Rooks up in play as compensation.

Rd 6 Board 10 E Celorio - R Dean 1-0



After White's 56th

56 ... Q-Q8+ 57 K-K4 Q-K7+ 58 K-B5  
 Q-R4+ 59 K-K4 Q-K7+ 60 K-Q4 QxNP+  
 61K-Q5 Q-N6+ 62 K-B6 Q-R5+ 63 K-B7  
 QxP 64 P-Q4 P-QN4 65 Q-Q6+ K-K1  
 (65 .. K-B2? 66 P-K6+ wins Q)  
 66 P-Q5 Q-B2+ 67 K-B8 Q-R2 68  
 Q-Q8+ K-B2 69 Q-Q7+ Resigns. The  
 cute point is 66 .. P-KN4 67 P-K6  
 QxQ 68 KxQ when Black Queens but  
 is checkmated by the King and two  
 Pawns.

Rd 7 Board 9 Ray Fasano - Celorio  
 1 P-QB4 P-KN3 2 P-KN3 B-N2 3 B-N2  
 P-K4 4 N-QB3 N-K2 5 P-Q3 P-Q3 6  
 N-B3 QN-B3 7 P-Qr3 0-0 8 B-Q2 P-QR4  
 9 P-KR4 P-R4 10 R-QN1 N-Q5 11 P-K3  
 12 P-K4 P-QB3 13 0-0 P-KB4 14 PxB NxP 15 N-K4 N/4-Q5 16 N/4-N5  
 NxN+ 17 NxN P-R5 18 B-K3 N-B2 19 Q-Q2 B-B4 20 QR-Q1?? B-N5  
 21 B-KN5 Q-K1 22 Q-K3 Q-B2 23 N-Q2 BxR 24 RxB N-K3 25 N-K4 NxB  
 26 NxN B-R3! 27 B-K4 BxN 28 QxB QxP+ 29 K-R1 Q-B3 30 QxP+ QxQ

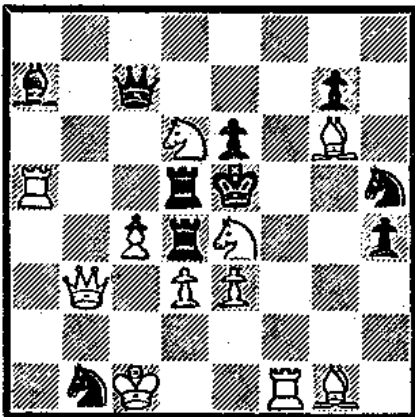
31 BxQ R-B7 32 BxRP QR-KB1 33 K-N1 RxQNP 34 P-Q4 P-K5 35 P-Q5  
Pxp 36 Pxp R-QB1 37 B-N6 R-QB6 38 Resigns

Rd 8 Board 4 E Celorio - Louis Levy 1-0

1 P-KN3 N-KB3 2 B-N2 P-QB4 3 P-K4 N-B3 4 N-K2 P-KN3 5 QN-B3  
E-N2 6 0-0 0-0 7 P-Q3 P-Q3 8 P-KR3 R-N1 9 P-QR4 P-QR3 10  
B-K3 P-QN4 11 Pxp Pxp 12 Q-Q2 P-N5 13 N-Q1 B-Q2 14 P-KB4 Q-B1  
15 P-KN4 N-K1 16 P-QB3 N-B2 17 P-Q4 NPxp 18 NPxp Pxp 19 PsP  
Q-N2 20 R-QB1 KR-B1 21 P-K5 P-Q4? ( 21 ... Q-R3! 22 P-K6 Pxp  
23 P-B5 ♞ ) 22 P-B5 Q-N5 23 N/1-B3 P-K3 24 N-N3! N-N4 25 Q-KB2  
NxN 26 PxpN K-R1 27 PxBP N-N4 28 N-R5 Q-B1 29 B-N5 P-R3  
30 B-B6 BxB 31 QxB+ K-R2 32 P-R4 Q-R1 33 P-N5 Resigns

Doredant vs Wilmore Vicksburg Open

1 P-K4 P-QB4 2 N-KB3 P-Q3 3 P-Q4 Pxl 4 NxP N-KB3 5 N-QB3  
P-QR3 6 B-N5 P-K3 7 P-B4 B-K2 8 Q-B3 Q-N3? Black has played  
very well up to this point. 8 ... Q-B2 would have been  
better. The text move is extremely bad since now after  
9 0-0-0 Black cannot advance the QNP. 9 0-0-0 QN-Q2? Another  
mistake. Black should see the error in his ways and retreat  
the Q to B2 so that his QNP can be advanced and the QB de-  
veloped at N2. 10 B-B4 White has an overwhelming position  
and the attack plays itself. 10 ... Q-B4? A fatal mistake,  
10 ... P-K4 is now necessary. 11 Bxp! A well known sac at K6  
described in all the opening manuals. 11 ... PxB? Fischer  
castled as Black in a similar position. 12 NxP Q-B5 13 NxP+  
K-Q1 hoping to find safety on the Queenside. 14 N-B5 Q-K3  
15 NxB QxN 16 P-K5! winning a piece. 16 ... Pxp 17 Pxp K-B2  
Of course not 17 ... Qxp then BxN+ wins the Q. 18 PxpN Q-K4??  
19 B-B4 Black Resigns. - Notes by the winner.



Answers to last month's problems:  
In the "Preview Mate" as Mr. Lockett  
calls them, the White pieces will stand  
on the same squares in the mating po-  
sition they are on now. 1 Ng1 Kg5  
2 Rg2 Kf6 3 Rg6 Ke5 4 Re6 Kd4 5 Re4  
Kc3 6 Rc4 Kd2 7 Rc2 Ke1 8. Nh3.

On the other diagram add a WK at g3,  
BP at g4 and a WP at f2. Black has  
just played ... Be5+ and the game  
proceeds 1 f4 gf e.p. † 2 K:f3  
WHITE TO PLAY & MATE IN 2.

-Andrew M Lockett, Jr., New Orleans

Postal Chess: Mathes 1 Freberg, Dean 1 Johnson, Dean 1 Weeks,  
Johnson 1 Mathes, Walker withdrew.

## Letter to the Editor

I have a few suggestions about the MCL. It would be of greater benefit to most Mississippi players if you could squeeze in a little more chess info that relates to actual play. I would like to see more games from Mississippi events. If you could annotate three best games in each issue, it would be of great help to C players like myself.

Instead of useless articles like Crowder's endless proposals of how to conduct the Mississippi championship, you could have articles on the middlegame and endgame. Something on the order of Evans' "What's the Best Move?" but with positions taken from Mississippi tourneys.

Get rid of the problems like "Why is white's K missing from the diagram" and put in something like "How can white turn his space advantage into a win?"

Also, "How to conduct a round robin" might be useful to tourney directors, but the average Mississippi chess-player can't benefit from it.

And in your column and Krouse's column -- you're just taking up space with all that philosophizing. Your advice to avoid the K-Indian Attack (sic. It was never mentioned.) might be sound; Krouse's advice to play the Danish Gambit may also be sound, but I think the space could be used to better advantage.

Ed Issa, Greenville

Some of your points are well taken, but there is a point or two that deserve an explanation. Last month we had intended to have the pages reduced to  $\frac{1}{2}$  size, allowing us to get four pages on an  $8\frac{1}{2} \times 11$  sheet instead of two, but the printer didn't get the message. Filler was used on two of the pages; i.e. material which would cause nothing earthshaking if it waited years before getting published.

Crowder's article was certainly not filler. When an elected MCA officer has something to say to the membership, where else can he say it? Also, when we presented our proposal in MCL #3, an invitation was made for any different proposal. Whatever plan that will be adopted by the responsible MCA members at the Chess Congress is far more likely to be well thought out and acceptable to all sides than a spur of the moment plan. . . the only possible result if all plans were presented at the last minute.

We try to publish as many games as possible from each tourney, if we get them. You would be surprized how many scoresheets can't be read simply because of notation errors. Of course, the membership is always invited to submit their best games for publication.



Laurel Open Chess Classic  
April 26-28

1	Brian C Wiggin AL	1907	w25	w8	w7	w5	d2	4 $\frac{1}{2}$
2	Jerry D Krouse	1851	w17	w24	w6	w14	d1	4 $\frac{1}{2}$
3	Andrew F Campbell	1590	w22	w4	L5	w20	w8	4
4	T D Roberson	1401	w10	L3	w22	w11	w9	4
5	Matthew C Hunter	1505	w28	w31	w3	L1	w7	4
6	Mike Greco	1518	w32	w19	L2	w15	w14	4
7	Gunnar Woodard	1589	w12	w21	L1	w10	L5	3
8	Buck Marshall	1426	w33	L1	w23	w16	L3	3
9	M A Farrell	1541	w23	L13	w19	w21	L4	3
10	Larry May	Unr.	L4	w25	w12	L7	w20	3
11	Joe Farris	1653	L19	w15	w17	L4	w21	3
12	Michael Penny	1274	L7	w33	L10	w32	w19	3
13	Alvin Watts	Unr.	w20	w9	w30	LF	LF	3
14	Rolland May	1595	w29	d30	w16	L2	L6	2 $\frac{1}{2}$
15	David Hayes	1528	d16	L11	w27	L6	w24	2 $\frac{1}{2}$
16	Joseph Datlof	Unr.	d15	w18	L14	L8	w26	2 $\frac{1}{2}$
17	James Knight	903	L2	bye	L11	w31	d18	2 $\frac{1}{2}$
18	Rick Johnson	1492	L31	L16	w26	w23	d17	2 $\frac{1}{2}$
19	Geroge Carter	Unr.	w11	L6	L9	w25	L12	2
20	Clayton Rowland	1387	L13	w32	w31	L3	L10	2
21	Stephen Rey	Unr.	w26	L7	w24	L9	L11	2
22	John Barrett	Unr.	L3	w29	L4	L26	w33	2
23	Marilyn Berger	Unr.	L9	w28	L8	L18	w31	2
24	Laird Woodard	1242	bye	L2	L21	w28	L15	2
25	L Allen Kerr	1359	L1	L10	bye	L19	w32	2
26	Gordon Scott	1444	L21	d27	L18	w22	L16	1 $\frac{1}{2}$
27	J O Headman	Unr.	L30	d26	L15	L29	bye	1 $\frac{1}{2}$
28	Johnny Pryor	Unr.	L5	L23	w33	L24	d29	1 $\frac{1}{2}$
29	Gary Phillips	Unr.	L14	L22	L32	w27	d28	1 $\frac{1}{2}$
30	Billy Ivy	1262	w27	d14	L13	LF	LF	1 $\frac{1}{2}$
31	Melita Reeves AL	Unr.	w18	L5	L20	L17	L23	1
32	Richard Goodwin	Unr.	L6	L20	w29	L12	L25	1
33	Richard Parker	Unr.	L8	L12	L28	bye	L22	1

Tournament Director: Bill McDonald

(Letter to Ed. Cont.)

The primary purpose of this or any state chess periodical is to provide publicity for local players and events in the state. While improving the general level of play is a worthwhile objective, we cannot rely on salaried masters, only on articles submitted voluntarily by our members (none over Class A). The fact that a number of our articles suggest attitude or opening changes, or only show the reader where to look instead of taking him there (complicated combinations for example) is no reason for us to apologize.

If there is enough space left over we try to include a variety of material for readers interested in any phase of the game, not just OTB tournaments.

Content, size, and frequency of publication, along with a proposed dues increase are among the things to be discussed at the Chess Congress.

PORTER PONDER'S

Every player it seems gets around to reading, and then applying the opening presented in Fred Reinfield's How To Think Ahead In Chess. To a player who consistently gets smashed in 10 moves with the Black pieces, the prospect of still being in the game after 20 moves with the White men is overpowering. All White has to do is play eight moves against anything Black does and then bowl him over with a K-side attack. Of course, even if Black doesn't waste time on the Q-side and meets White head-on, White's set up is still good for defence and is impossible to crack in less than 20 or 25 moves.

In this game White, a Class A player and former Miss. Champion played this opening; perhaps for surprise value, perhaps to hide his sharper openings for later rounds, or perhaps he underestimated his opponent (easy to do since his rating was incorrectly posted). Anyway, Black handled himself well in the opening and White had the choice of rolling over or playing like he did.

Vicksburg 1974

John Poole	Ed Issa
1 d2-d4	Ng8-f6
2 e2-e3	d7-d5
3 Nb1-d2	c7-c5
4 c2-c3	Nb8-c6

White only defends his center point d4 instead of attacking the Black center with an early c4.

5 f2-f4 Bc8-f5  
Normally White plays 5 Bd3 to prevent this move.

6 Ng1-f3	e7-e6
7 Bf1-e2	Bf8-d6
8 Nf3-e5	O-O
9 Be2-f3	c5 x d4
10 e5 x d4	Nf6-d7
11 O-O	f7-f6

Black isn't going to stand still for White's system.

12 g2-g4 . . .  
White is on the verge of getting nothing out of the opening. If he trades or retreats the Knight, Black will be able to open the game with all his pieces ready for action.

12 . . .	f x e5
13 g4 x f5	e5-e4!
14 f5 x e6	. . .

DIAGRAM IN MCL # 5.

This is an excellent place for Black to spend up to an hour on the clock. Both sides are attacking a minor piece, so these forces balance each other. 14 ... Nf6 15 Bg2 allows White to support his P at f4 or f5. A move which deserved attention is 14 ... Bf4:.. For example 15 ed7: Qh4 which can best be answered by 16 Qe2 and now Black has to recover his piece. Against other 15th moves by White, Black may get a chance to trade off the KR's, allowing his QR to be the only one in play (i.e. 15 Be4:).

The move played threatens to win the f Pawn and ultimately, the e Pawn at the cost of putting the Knight out of play.

14 . . .	Nd7-b6
15 Bf3 x e4!	d5 x e4
White won't be suffocated.	
16 Nd2 x e4	Qd8-e7
17 f4-f5	Bd6 x h2+
Black wins a Pawn, but if he had a choice, he would take a center Pawn.	
18 Kg1 x h2	Qe7-h4+
19 Kh2-g1	Qh4xe4
20 Rf1-f4	Qe4-d5
21 Qd1-h5	. . .

White, after his sacrifice is fighting a race against time; he must mount an attack before Black gets developed.

21 . . . g7-g6?  
There is no reason why Black should create holes in his K-side pawns. 21 .. Rf6, preparing for .. Raf8 and .. Ne7 should have been played. 22 Rh4 is answered by 22 .. Qf5:

22 Qh5-h4	Rf8 x f5
23 Rf4 x f5	Qd5 x f5
24 Bc1-h6	Qf5-h5?

Black had the chance to rid himself of a powerful center pawn.

25 Qh4-f4	Qh5-f5
26 Qf4-c7	Qf5-g4+
27 Kg2-f2	Qg4-h4+
28 Kf2-g2	Qh4 x h6

Black is two Knights ahead, but in view of their activity, it is only on paper.

29 Qc7-f7+	Kg8-h8
30 Ra1-f1	Qh6-g7
31 Qf7-f3!	. . .

This is a good bid to expand in the center. 31 .. Ne7 with the idea of 32 .. Nf5 should hold though.

31 . . .	Ra8-e8
32 Qf3-e4	Nb6-d5?
Black had to challenge the open f file	
33 Rf1-f7	. . .

Abel, David	1654
Barrentine, William	1471
Brown, Sam P	1506
Burkhardt, Mike	1532
Cadden, Ernest	1373
Crowder, L E	1169
Crowder, Peyton	1870
Dean, Charles	1575
Dedwyldor, Wilk W	1278
Dorn, Ronald D	1312
Doredant, Richard	1668
Dribbon, John	1574
Freeland, Tommy	1032
Gray, John	1368
Hayes, David	1528
Huddleston Paul	1211
Hunter, Mathew C	1505
Jackson, Claude	1701
Johnson, Rick	1492
Joyner, Jerry	1617
Kerr, L Allen	1359
Marshall, N Buck	1426
Masters, John	1369
McNauld, Bill	1498
Mezin, Harold	1717
Meyer, Dan W	1051
Montgomery, Baird	1477
Myers, Leo	1576
Newsom, Paul	1630
Odom, Don	1350
Parham, F P	1836
Penny, Michael	1317
Perkins, Stan	1725
Pierce Charles	1195
Ratliff, David	1306
Regel, Joe	1377
Robbins, Jimmy	1507
Rowland, Clayton	1340
Scarborough, James	1613
Stephenson, Mike	1298
Sutterfield, Geary	1254
Watts, Alvin	1112
Watson, Byron	1654
Weeks, John	1235
Whitehead, Walter	1267
Williams, Robert	1536

The above is a list of the ratings of all MCA members with a rating which either changed or was not published in the last issue.

QUALIFYING POINTS  
May 13

Jerry Krouse	15
David Abel	8
John Poole	7
Stan Perkins	7
Joe Farris	7
Gunnar Woodard	6
Byron Watson	6
T D Roberson	6
W T Miller	6
Peyton Crowder	6
Paul Newsom	5
Ed Issa	4
Andrew Campbell	4
John Gray	3
Harold Melvin	2
Matthew Hunter	2
Richard Doredant	2
Richard Burkhardt	2
Mike Greco	1
Anthony Crawley	1

Poole-Issa (cont)

The line 33 .. Qg8 34 c4 and 35 d! threatening 36 Qe5 or d4+ isn't inviting, but 34 .. Ne3+ 35 Qe3: Rd! fails to 36 e7!

33 . . .	Nd5-f6
34 Qe4-f3	Rd8-f8
35 Rf7 x g7	Kh8 x g7
36 Qf3-e2	Nf6-d5
37 Qe2-b5	Nd5-e3+
38 Kg2-g3	Ne3-f5+
39 Kg3-h3	Nf5-d6
40 Qb5-d5	Nd6-f5
41 Qd5-d7+	Nc6-e7
42 d4-d5	Kg7-f6
43 d5-d6	Ne7-c6

Black had to sac a Knight for the d Pawn.

44 e6-e7 Rf8-f7??

Black would have had a lot better chances of drawing the game had he played 44 .. Nce7:.. Here White missed 45 e8N+ winning a R and N. As it is he wins "only" a Rook.

45 e7-e8Q? Rf7 x d7

46 Qe8 x d7 Kf6-e5

The remaining moves were 47 Qb7: Kd6 48 Qh7: Nce7 49 Qf7 Kc5 50 a4 a5 51 Qe8 Nc6 52 Qg6: Nfe7 53 Qg5+ Kc4 54 Qb5 X

Refer to this column and games from MCL #5.

MISSISSIPPI CHESS CONGRESS

June 28-30

at The Jackson Hilton

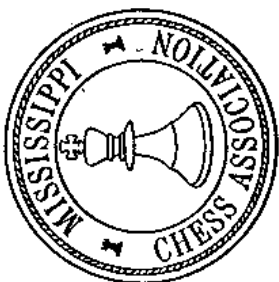
Schedule	
6/28	7:30 pm MCA Business Meeting
6/29	8-8:45 am Registration
6/29	9 am Round 1
6/29	2 pm Round 2
6/29	8 pm Round 3
6/30	8:30 am Round 4
6/30	1:30 pm Round 5

ENTRY FEE: \$10 over 21  
\$5 under 21  
TIME LIMIT: 50/2 & 20/30

Inquiries and advance reg to:  
Bill McDonald  
3585 Lanell Lane  
Pearl, MS 39208

	Prizes	
Overall	1st, 2nd, 3rd	Trophy
Class B	1st, 2nd	Trophy
Class C	1st, 2nd	Trophy
Class D	1st	Trophy
Class E	1st	Trophy
Unrated	1st	Trophy
Trophy also to top Junior, College, and High School		

Spencer Stephen  
6009 Cedarbush Dr  
Southaven Ms 38671



PLEASE SA  
TO THE  
MARCH OF



Return to  
719 Launcelot Rd,  
Jackson, MS 39206

