



# MISSISSIPPI CHESS ASSOCIATION

A USCF affiliated organization dedicated to the support of Chess in Mississippi

MISSISSIPPI CHESS LETTER

Vol II

Number 4

January 75

President: Bill McDonald, 3587 Lanell Lane, Pearl 39208  
Vice President: Jerry Krouse, P. O. Box 1003, Natchez 39120  
Treasurer: Gordon Scott, 5552 Crepe Myrtle, Jackson 39206  
Parliamentarian: Judson Farmer, 1229 Lynnwood Drive, Jackson 39206  
Temporary Editor: Bill McDonald, 3587 Lanell Lane, Pearl 39208

## PRESIDENT'S MESSAGE

As the ghost of 1974 fades, we look to the New Year with both hope and apprehension. This past year: saw the MCA involved in a struggle to produce an equitable championship system; watched as we grew in strength and resolve; recorded an upsurge in tournaments which promised to carry over into the new year; and, smiled as the MCA took it's first unsteady steps from infancy toward maturity. With the selfless help of numerous dedicated players and organizers the MCA is progressing toward a success never before seen in Mississippi.

But let us not lose sight of the areas for concern. Recent tournaments (Mississippi Open, 3rd Dixie Open) have shown a marked decrease in the number of new, young players interested in Chess. Without constant 'New Blood' the MCA and tournament organizers will find themselves in a precarious situation. Certainly the lack of tournament play by Fisher and the corresponding dearth of national media coverage have each played their role in this reduction of new players. It must be the task of each MCA member to encourage and stimulate novice players.

A recent conversation with a high official of the Mississippi High School Activities Association revealed that the MCA could expect no help from the MHSAA in setting up a High School Chess Program. We desperately need such a program if we are to fulfill our role in the development of Chess. It would be an invaluable service to the MCA if each Chess Community would have a responsible person contact an official in a high school in regard to a chess program. Anyone needing additional information is urged to contact me.

I choose to look forward into 1975 with an optimistic eye. Our problems are not small, but we have the resources to conquer them. We have YOU. And with YOU on the job, we can not fail.

## MARS & STEEL TROPHIES OFFERS DISCOUNT

Mars & Steel Trophies, 348 Jackson Mall, Jackson, MS 39209, has offered a discount of 25% off the published price of trophies to MCA affiliate organizers. Be sure to contact this firm when planning a tournament, it could save those all important dollars. The phone number to call in Jackson is 982-7626, Ms. Sabyna Steel.

Affiliated with the UNITED STATES CHESS FEDERATION

100  
1975  
100

## EDITORIAL

Although we promised to keep the Championship System out of the MCL for a few more months, it is imperative that a change be made in this year's system in time for organizers to make their plans.

One of the rules which came forth as our System evolved is that the Championship would be played simultaneously with another MCA open tournament, allowing participants in the other tournament to watch the championship as it is being played. In view of the size of the tournament last year and the expanded format of this year's Championship (16 players instead of 6) we can not afford this luxury. Last year's tournament, even with the fantastic drawing card of being able to watch the Mississippi Championship drew only 26 players. Who will hold this tournament this year? Stand up sheep and be fleeced, er, counted! The organizer this year would be guaranteed that sixteen normally active tournament players will not be playing in his event.

Our proposal is that three weeks after the Mississippi Open the Championship must be played. The only two exceptions to this would be: 1. The Championship tourney would be played on a holiday weekend. In that case it would be delayed one week. 2. Unanimous consent by all of the participants to hold the Playoff on another weekend within two months after the Mississippi Open.

In discussions of this type money talks the loudest, but, there are other reasons to consider this proposal. For one, games from the Championship have always been published in the Chessletter. Players not in the Championship may feel that they are second class citizens. Finally, there is the possibility that persons eligible to play in the championship would want to play in the Open instead; i.e., higher prizes in the Open or a chance to win a 'C' trophy.

I ask that the MCA Executive Committee meet to discuss this matter as soon as possible.

- Warren Porter

---

### PORTER LEAVES EDITOR'S POST - RETURNS TO LSU

Warren Porter, Editor of the MCL, resigned recently to return to LSU in an effort to complete his requirements for a degree in Civil Engineering. The Chessletter has been under Porter's capable hand for the past year and a half.

For those of you that have never put out a publication, it takes a tremendous amount of time and devotion. The MCA owes a great deal to this individual for his fine accomplishments on our behalf. Thank you, Warren.

- Bill McDonald,  
MCA President

GREENVILLE OPEN

FEBRUARY 1 & 2, 1975

BUSTER BROWN COMMUNITY CENTER

400 ROBERTSHAW STREET

5 ROUND SWISS

REGISTRATION: 8-9 AM 2-1-75 - EF: \$14 18 & OVER, \$10 UNDER 18

\$100 + TROPHY TO FIRST PLACE

TROPHIES TO: SECOND PLACE, TOP B, TOP C, TOP D-E, TOP UNRATED

ROUNDS: 10 - 3 - 8 SATURDAY FEBRUARY 1ST

9 - 2 SUNDAY FEBRUARY 2ND

TIME LIMIT - 50/2 - 30/1 MCA QUALIFYING EVENT

---

2ND ANNUAL OXFORD OPEN

MARCH 1 & 2, 1975

MEEK HALL - UNIVERSITY OF MISSISSIPPI

5 ROUND SWISS

REGISTRATION: 8-9:45 AM 3-1-75 - EF: \$12 21 & OVER, \$ 7 UNDER 21

\$100 + TROPHY TO FIRST PLACE \$50 + TROPHY TO SECOND PLACE

TROPHIES TO: TOP A, TOP B, TOP C, TOP D, TOP E-UNRATED

ROUNDS: 10 - 3 - 8 SATURDAY MARCH 1ST

8 - 1 SUNDAY MARCH 2ND

TIME LIMIT - 50/2 MCA QUALIFYING EVENT

---

## MISSISSIPPI POSTAL CHESS

FINAL ANNOUNCEMENT FOR THE 1975 POSTAL CHAMPIONSHIP.

\$ 2.00 ENTRY FEE - ALL ENTRY FEES WILL BE RETURNED IN THE FORM OF

PRIZES - AWARDS WILL DEPEND ON NUMBER OF ENTRIES - ENTRIES WILL

BE ACCEPTED THROUGH FEBRUARY 15TH - MAIL ENTRY TO: GORDON SCOTT

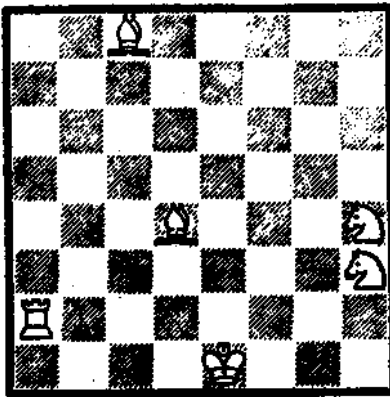
TOURNAMENT DIRECTOR: JIMMY ADEN

5552 CREPE MYRTLE

DON'T DELAY - ENTER TODAY

JACKSON, MS 39206

MAKE CHECKS TO MISSISSIPPI CHESS ASSOCIATION



Initial BKh1, BPe3,h6  
Final BKg1, unknown  
black piece at h1

First of all our congratulations to Joe Farris of Vicksburg and Rick Johnson of Jackson for taking first and second places respectively in the problem solving contest. These were the only two entries received; apparently the problem was too difficult or every one thought that they had to be some kind of a genius to solve it.

The preview mate easily lends itself to retrograde analysis. Although this ten move preview mate isn't perfect (at least two key moves and transpositions by white are possible) coordination of the pieces in the final five moves is excellent. All solutions we have seen are identical in the latter half. Read the following moves from right to left.

10 Nf2-h3 mate

Since the mate was a double check, this is obvious.

9 .... h2-h1(?)

Clearly forced. On Black's 8th move why did he play his pawn to h2 instead of the king? The square h2 had to have been under attack.

9 Be5-d4 ....

8 .... h3-h2

Black's Pawn couldn't have been pushed to h3 on his last move. Since his king is in a stalemate net, his last two pawn moves have been (will be?) forced. On his previous move (7) here we assume he replied to a check from a knight which previously stood on f3. From that square the N helped to set up an earlier stalemate forcing the advance of the pawn to h3. A N on f3 would have had to have been defended, so

8 Ke2-e1 Starting at the top, all we need to do  
7 ... Kg2-g1 is reach this position in six moves.  
7 Nf3-h4+ ... One solution 1 Ke2 h5 2 Be3: Kh2  
6 ... h4-h3 3 Bf4+ Kh1 4 Nf3 h4 5 Nf2(+) Kg2  
6 Be5 etc.

1 ... Kh2 2 Be5+ Kh1 3 Ke3: h5 4 Nf3 h4 5 Ke2 Kg2 6 Nf2 etc.  
Underlined moves may be transposed. Lines starting with 1 Be5 give White a choice of tempo moves at one point.

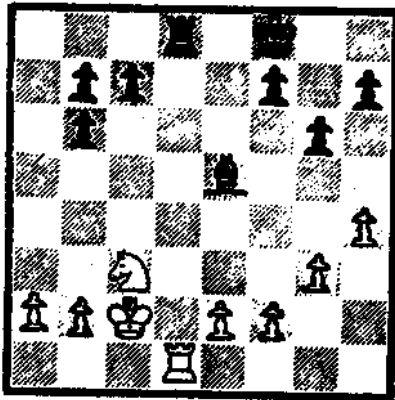
The main purpose of this contest was to test the MCA member's interest in problems of this nature. We found out.

Key to the problem in Vol II, No 3: 1 Ba8

## IS YOUR TOURNAMENT SCHEDULED ???

The MCA knows of no tournaments to be held in the state after the 1st of March. There are a number of cities capable of holding an event who have not yet notified us of a date. We need more chess events in Mississippi. Start making plans NOW for an event in your area. Don't forget that it takes several months to have your event publicized in CHESS LIFE & REVIEW. Time's awasting!!!

PORTER PONDERERS



More than one chessplayer has asked how games are selected for the Chessletter. To start off if the scoresheet is illegible or undecipherable (assuming the opponent's scoresheet is just as bad or nonexistent) there is no way to publish the game. On the other hand games submitted and annotated by one of the players are nearly always accepted.

It is impossible to publish all games from any one tournament. Our main basis of selection is will the game be of interest and instructive to the player who is seriously studying to improve his game and performance in future tournaments. In this light games featuring a sharp opening, middlegame, and/or endgame are almost always used. If the game is decided by a serious blunder, play before the blunder determines whether or not it is used, and, if the blunderer doesn't resign, remaining moves would be truncated with, "and wins." Happily most of our tournament players don't need instruction on how to win with three extra pieces against someone who blunders once every five moves.

Porter - Bostrom (2054) 1974 Mid-South Open, Memphis

My opponent arrived 40 minutes late and tried to keep the position simple to avoid time trouble, but spoiled any chance he had to gain an advantage. In the diagrammed position I offered a draw since he had to exchange Rooks or keep trying to neutralize my d-file. After the trade my better Pawn structure would compensate for his Bishop vs Knight advantage. 22 .. RfR 23 KxR BxN?? I couldn't believe this. 24 BxB Ke7 25 Rd2 Kd6 26 Kd3 Kc5 27 e4 (Black must have believed that he could penetrate and be in fine shape, but the White K-side Pawns don't need any support to create a Passed Pawn, although it comes in handy. If 27 .. Kb5 28 Kd4-e5-f6 and wins the Pawn race easily.) 27 .. b5 (threat b4) 28 a3 h5 29 f3 (The g Pawn cannot be left backward.) b6 30 g4 Kd6 31 gh gh 32 Kd4 Ke6 33 f4 f6 (White has now achieved the classical Pawn majority, but 35 e5 would be too hasty. 35 .. f5 followed by c6 would insure the draw.) 34 f5+ Kd6 35 e5+: (With this White loans Black a Pawn and achieves the superior K-position necessary to regain it later.) 35 .. fe+ 36 Ke4 c5 37 f6 Ke6 38 f7 Kf7: 39 Ke5: Kg6 40 Ke6 c4 (Black's only chance as will be seen later.) 41 Ke5 Kg7 42 Kf5 Kh6 43 Kf6 Kh7 44 Kg5 Kg7 45 Kh5: Kf6 46 Kg4?: (46 Kh6 would have been a little better move as Black would have been tempted to play .. Kf7 hoping for 47 h5?? Kf6 48 Kh7 Kf7 49 h6 b4: 50 ab b5=. However 47 Kg5 Kg7 48 Kf5 would be a lot surer than the game continuation. If 46 .. Kf5 47 Kh5 and White can play Kg4 when the position repeats.) 46 .. Kg6 47 h5+ (Only delays the next phase of the endgame. Kf4 would have been good now since in all lines the K would move to the d-file after the h-Pawn is captured.) 47 .. Kg7 48 Kf5 (White is as ready as he can be. The reader may want to work out what would happen if White "stalemated" Black and forced a clarification of the Q-side.) 48 .. Kh6 49 Ke6 Kh5: 50 Kd6 Kg5 51 Kc6 Kf5 52 Kb6: b4: (Else Ke4 53 Kb5: Kd3 54 Kb4 55 ab Ke4 56 Kc5 (Not the only move to win [Ka5 also] but easiest.) 54 .. Kd3 55 b5 Kc3: 56 b6 Kd3 57 b7 c3 58 b8Q c2 59 Qf4 (Although the White King is close enough to prevent the draw, the text makes that point moot. If the BK stood on d2 the line would be 59 Qb2 Kd1 60 Qd4+ Ke2 61 Qc3 Kd1 62 Qd3+ Kc1 63 Kb4 Kb2 64 Qc3+ Kbl 65 Kb3 c1Q 66 Qd3+ Kal 67 Qa6+ Kbl 68 Qa2X) 59 .. Kc3 60 Qc1 Kb3 61 Kd4 1:0 One has to question Black's decision to try to win this endgame, or even play it in the first place. His defence was excellent, but there wasn't enough in the position to allow him to hold.

3rd Dixie Open, January 11 & 12  
Starkville, Mississippi

Player	Rating	*****Rounds*****					Total
		1	2	3	4	5	
1. Alfonso Ferriz (Mex)	2192	W10	W11	W30	W3	D2	4 1/2
2. Sergio Campos-Ortega (Mex) Unr		W31	W22	W34	W9	D1	4 1/2
3. Norman T. Whitaker (Md)	2200	W13	W33	W5	L1	W20	4
4. Richard Price	2029	L25	W27	W19	W15	W18	4
5. Stan Perkins	1733	W37	W19	L3	W24	W16	4
6. Peyton Crowder	1862	W36	W25	D8	D22	W10	4
7. Samuel D. Jollay (Tn)	1633	W27	L8	W26	W23	W9	4
8. John Gray	1430	W41	W7	D6	L18	W22	3 1/2
9. Luis Busquets (NY)	2184	W35	W15	W17	L2	L7	3
10. Alan Todd (ALA)	1476	L1	W39	W21	W17	L6	3
11. Gordon Scott	1537	W16	L1	D23	D14	W32	3
12. Chuck Wilmore	1378	W21	L34	L22	W31	W30	3
13. Byron Watson	1550	L3	W29	W14	L26	W28	3
14. Roger Rowlett (ALA)	1558	W29	D16	L13	D11	W24	3
15. Mike Sulcer (ARK)	1556	W28	L9	W38	L4	W29	3
16. Duane Weed	1207	L11	Bye	W33	W30	L5	3
17. Anthony Crawley	1738	W42	W24	L9	L10	W26	3
18. T. D. Roberson	1593	L23	W36	W37	W8	L4	3
19. Keevin Lee	1508	W43	L5	L4	W39	W23	3
20. Claude A. Jackson	1701	L24	W42	W25	W28	L3	3
21. Howard Gary	1678	L12	W38	L10	W37	W27	3
22. Jimmy Robbins	1574	W40	L2	W12	D6	L8	2 1/2
23. John Ivey	1144	W18	D14	D11	L7	L19	2
24. Richard Carter	1314	W20	L17	W31	L5	L14	2
25. John Masters	1501	W4	L6	L20	L32	W39	2
26. M. A. Farrell	1462	L34	W43	L7	W13	L17	2
27. James M. Knight	1366	L7	L4	W43	W33	L21	2
28. Geary Sutterfield	1245	L15	W35	W32	L20	L13	2
29. John F. Barrett, Jr.	1306	L14	L13	W42	W35	L15	2
30. Robert B. Williams	1598	W38	W32	L1	L16	L12	2
31. Ed Issa	1578	L2	W40	L24	L12	W37	2
32. Reginald Beal	895	Bye	L30	L28	W25	L11	2
33. Pete Shirley (ARK)	1566	W39	L3	L16	L27	W38	2
34. Charles Applewhite (LA)	2028	W26	W12	L2	LF	LF	2
35. Larry Wright	1523	L9	L28	W40	L29	W42	2
36. Bill Trim	1335	L6	L18	L41	D42	Bye	1 1/2
37. Rick Johnson	1392	L5	W41	L18	L21	L31	1
38. Ron Davis	1340	L30	L21	L15	W43	L33	1
39. John Weeks	1245	L33	L10	Bye	L19	L25	1
40. Ernest Cadden	1301	L22	L31	L35	Bye	LF	1
41. Marion Wheeler (LA)	1750	L8	L37	W36	LF	LF	1
42. Clayton Rowland	1400	L17	L20	L29	D36	L35	1/2
43. Tom Hogan (LA)	UNR	L19	L26	L27	L38	LF	0

Tournament Director: Larry Wright, LTD  
 Assistants: Clayton Rowland, LTD  
 Peyton Crowder, ITD

First Place: Ferriz, trophy & \$75  
 Second Place: Campos-Ortega, Trop & \$75  
 Class B Winner: Perkins, trophy & \$12.50  
 Class B Second: Jollay, \$12.50  
 Class C Winner: Gray, trophy & \$25  
 Class D Winner: Wilmore, trophy & 12.50  
 Class D Second: Weed, \$12.50  
 Class E Winner: Ivey, trophy & \$12.50  
 Class E Second: Beal, \$12.50

Average of Rated Players- 1551

Shortest Mate: Jollay, \$10 (11 moves)  
 Shortest Game: Sulcer, \$10 (over Davis)  
 Upset: Masters, \$10 (over Price)

GAMES FROM 3rd DIXIE OPEN

Jackson-Carter 1 P-Q4 N-KB3, 2 P-QB4 P-K3, 3 N-QB3 B-N5, 4 B-N5 P-KR3, 5 BxN QxB, 6 N-B3 P-B4, 7 P-K3 N-B3, 8 P-QR3 Pxp, 9 Pxp BxN 10 PxB P-QN3 11 B-K2 B-N2 12 0-0 0-0 13 Q-B2 P-Q3 14 KR-K1 QR-B1 15 N-Q2 N-K2 16 N-K4 BxN 17 QxB P-Q4 18 Pxp NcP 19 P-QB4 N-B6 20 Q-Q3 NxB+ 21 Rcn KR-Q1 22 R-Q2 P-K4 23 P-Q5 P-K5 24 Q-Q4 Rcp/5 25 QxR QxR+ 26 Q-KB1 QxP 27 P-R3 Q-B4 28 Q-N1 P-K6 29 Pxp+ 30 K-B1 P-N3 31 Q-R1 R-R1 32 Q-K5 P-QR4 33 Q-K3 R-Q1 34 Rcp QxP 35 Q-B3 QxQ 36 Rcx P-QN4 37 K-K2 P-B4 38 X-QB3 R-Q3 39 R-B5 R-N3 40 K-Q3 K-B2 41 K-Q4 P-R5 42 R-B7+ K-B3 43 K-B5 R-N1 44 P-R4 P-KB5 45 R-B6+ K-B4 46 K-N4 P-R4 47 R-R6 P-N4 48 Pxp Kxp 49 R-QB6 P-R5 50 R-B3 K-N5 51 R-KB3 R-QR1 52 R-QR3 P-B6 53 Pxp+ K-B5 54 Kxp P-R6 55 K-B4 P-R7 56 R-R1 Kxp 57 R-R3+ K-N5 58 R-R1 R-R1 59 R-R1 K-N6 60 K-N4 K-N7 61 Rcp Rcx 62 Kxp R-R4 63 K-N4 K-B6 64 K-B4 K-K5 65 K-B3 R-K4 0:1

Busquets-Jollay 1 P-K4 P-Q4 2 N-QB3 Pxp 3 NcP P-KN3 4 N-KB3 B-N2 5 P-Q4 B-N5 6 B-QB4 N-QB3 7 Bxp+ K-B1 8 P-B3 Bxp 9 PxB NcP 10 QxN BxN 11 QxR Q-Q8++ 0:1

Sulcer-Davis 1 P-K4 P-K4 2 B-B4 N-KB3 3 P-Q4 NcP 4 Pxp B-B4 5 Q-Q5 Qxp+ 6 K-B1 Q-R5 7 QxBP+ K-Q1 8 QxNP R-K1 9 B-B7 B-B4 10 N-KR3 P-QN3 11 P-B4 B-B1 12 Q-N8 N-KB3 13 B-N5 B-K2 14 Pxn Rcx 15 PxB++ 1:0

Price-Knight 1 e4 c5 2 Nf3 d6 3 Nc3 Nf6 4 d4 cd 5 Nd4 g6 6 f4 Bg7 7 e5 de 8 fe N(3)d7 9 e6 fe 10 Ne6 Bc3+ 11 bc Qa5 12 Qd4 Qe5+ 13 Qe5 Ne5 14 Nc7+ Kd8 15 Na8 Bf5 16 Be3 and White wins 1:0

Jackson-Sutterfield 1 P-Q4 P-Q4 2 P-QB4 P-QB3 3 N-QB3 N-KB3 4 N-KB3 B-KN5 5 P-K3 P-K3 6 B-K2 B-Q3 7 0-0 0-0 8 N-K5 BxB 9 QxB BxN 10 PxB N-K5 11 P-KB4 NcN 12 Pxn P-KB4 13 R-B3 P-KN3 14 R-N3 K-N2 15 Q-R5 R-R1 16 R-N5 Q-N1 17 B-R3 K-B2 18 Q-R4 P-KR3 19 RxBP+ resigns 1:0

Knight-Jollay 1 P-K4 P-Q4 2 Pxp N-KB3 3 P-Q4 NcP 4 N-KB3 P-KN3 5 P-KN3 B-N2 6 B-N2 0-0 7 0-0 N-QB3 8 R-K1 B-N5 9 P-B4 N-N3 10 B-N5 R-K1 11 P-KR3 BxN 12 BxB Bxp 13 BxN PxB 14 Bxp RxB 15 Rcx Bxp+ 16 resigns 0:1

Lee-Hogan 1 N-KB3 N-KB3 2 P-QB4 N-QB3 3 P-Q4 P-Q4 4 N-QB3 P-K3 5 B-N5 B-K2 6 P-K3 0-0 7 B-Q3 N-QN5 8 B-K2 N-K5 9 NcN Pxn 10 BxB QxB 11 N-K5 N-B3 12 NcN Pxn 13 0-0 R-N1 14 Q-B2 P-KB4 15 P-B5 R-B3 16 P-QR3 R-R3 17 P-QN4 Q-R5 18 P-KR3 R-N3 19 K-R2 P-B5 20 Qxp P-K4 21 QxKP B-N5 22 QxKBP R-KB1 23 B-B4+ K-R1 24 QxR++ 1:0

Johnson-Roberson 1 e4 c5 2 Nf3 d6 3 d4 cd 4 Nd4 Nf6 5 Nc3 a6 6 Bg5 e6 7 f4 Qb6 8 Qd2 Qb2 9 Nb3 Qa3 10 Be2 Nc6 11 0-0 Qb4 12 Bf3 Be7 13 Bh4 Qb6+ 14 Bf2 Qc7 15 Na4 b5 16 Nb6 Rb8 17 Qe3 Nd7 18 Nd7 Bd7 19 Qc3 Bf6 20 Bd4 b4 21 Qc4 Bd4+ 22 Nd4 Qa7 0:1

Shirley-Whitaker 1 P-K4 P-K4 2 N-KB3 P-KB4 3 Pxp N-QB3 4 P-Q4 P-K5 5 N-KN5 N-KB3 6 P-KN3 P-Q4 7 B-KN2 Bxp 8 N-KR3 B-Q3 9 B-KB4 0-0 10 0-0 BxN 11 KBxQB BxB 12 PxB Q-K1 13 K-R1 N-KR4 14 P-KB5 N-KB5 15 Q-KN4 NxB 16 QxN NcP 17 N-QB3 Q-K4 18 QR-Q1 P-B3 19 P-KB4 PxpPep 20 KR-K1 Q-KB5 21 Rcn QxR 22 Qxp QR-K1 23 R-KN1 R-K6 24 Q-KB2 Q-K4 25 R-N5 Q-K2 26 N-Q1 R-K8+ 0:1

Johnson-Perkins 1 e4 c5 2 Nf3 d6 3 d4 c:d 4 N:d4 Nf6 5 Nc3 g6 6 Be3 Bg7 7 Qd2 0-0 8 Bc4 e6 9 Nb5 N:e4 10 N:e4 d5 11 B:d5 e:d 12 Nc3 a6 13 Nd4 Nc3 14 0-0-0 Be6 15 Re1 Re8 16 Nb3 Qh4 17 h3 d4 18 B:d4 N:d4 19 N:d4 Bh6 20 Re3 B:e3 21 f:e Qg3 22 Ne4 Qe5 23 Qd3 B:a2 24 Resigns 0:1

Knight-Shirley 1 P-K4 P-K3 2 P-Q4 P-Q4 3 Pxp Pxp 4 B-Q3 B-Q3 5 N-KB3 N-QB3 6 0-0 KN-K2 7 R-K1 P-KR3 8 P-B3 B-K3 9 QN-Q2 Q-Q2 10 P-QN4 0-0-0 11 N-QN3 NcNP 12 Pxn Bxp 13 N-QB5 BxN 14 N-K5 Q-Q3 15 PxB Qxp 16 B-K3 P-Q5 17 B-KB4 P-KN4 18 R-QB1 Q-Q3 19 NcBp QxB 20 NcKR Q-B3 21 Q-B3 B-B4 22 Rcn QxR 23 QxB+ K-N1 24 N-N6 Q-K1 25 Q-K5 QxQ 26 NcQ R-Q4 27 N-QB4 R-QB4 28 P-QR4 P-QR3 29 P-KR3 P-N4 30 Pxp Pxp 31 R-N1 K-B1 32 N-Q2 P-B3 33 N-K4 R-Q4 34 N-KB6 R-K4 35 N-N4 R-QB4 36 NcRP R-B6 37 B-B5+ K-B2 38 N-N4 P-Q6 39 R-Q1 P-N5 40 RcxP Rcx 41 BxR P-N6 42 N-K3 K-N3 43 K-B1 K-B4 44 K-K1 K-Q5 45 K-Q2 P-B4 46 B-B4 Resigns 1:0

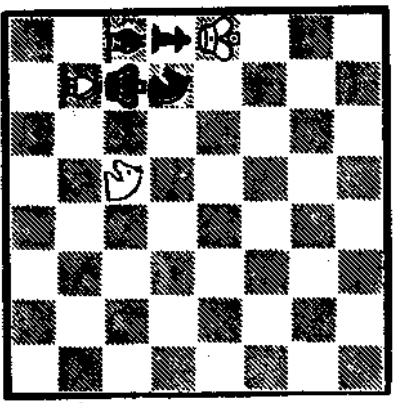
Wright-Busquets 1 P-K4 P-QB4 2 N-KB3 N-QB3 3 P-Q4 Pxp 4 NcP P-KN3 5 N-QB3 B-N2 6 B-K3 N-B3 7 B-QB4 0-0 8 Q-Q2 N-KN5 9 0-0-0 NxB 10 NcN NcB 11 NcQ NcQ 12 KcN Rcn 13 N-N5 P-Q3 14 K-B1 B-K3 15 P-QN3 P-QR3 16 N-B7 QR-B1 17 N-Q5 BxN 18 PxB R-B2 19 P-N3 B-B6 20 R-Q3 R/1-QB1 21 P-B4 B-N5 22 P-QB4 P-QN4 23 Resigns 0:1

MORE GAMES NEXT MONTH...

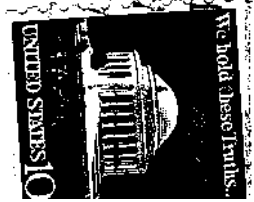
QUALIFYING POINT TOTALS FOR MISSISSIPPI STATE CHAMPIONSHIP  
AS OF JANUARY 16, 1975

PEYTON CROWDER	33	ROBERT B. WILLIAMS	6
STAN PERKINS	19	MIKLOS BENCZE	4
BYRON WATSON	16	RON DAVIS	4
T. D. ROBERSON	14	M. A. FARRELL	4
ANTHONY CRAWLEY	12	RICK JOHNSON	4
JERRY KROUSE	11	JERRY JOYNER	4
RICHARD DOREDANT	11	CHUCK WILMORE	3
JOE FARRIS	9	DUANE WEED	3
JOHN MASTERS	9	CLAUDE A. JACKSON	3
GORDON SCOTT	7	HOWARD GARY	3
KEEVIN LEE	7	MIKE VAUGE	2
ED ISSA	6	BUCK MARSHALL	2
SAM BROWN	6	WARREN PORTER	2

THIS PROBLEM WAS COMPOSED BY ANDY  
LOCKETT IN SEPT 1969.  
BLACK HELPS WHITE TO MATE BLACK  
IN 3. BLACK MOVES FIRST.



RETURN:  
DMS552 Crepe Myrtle  
5552 Crepe Myrtle  
JACKSON, MS 39206  
MEMBERSHIPS: (\$5/YR. \$2.50 USD NEW)  
JACKSON, MS 39206



SPENCER STEPHEN D  
6009 CEDAR BRUSH DRIVE  
SOUTHAVEN, MS

7510 1441  
38671