

MISSISSIPPI CHESS ASSOCIATION

A USCF affiliated organization dedicated to the support of Chess in Mississippi

May-June 1980
Vol. 7, No. 4

* The MISSISSIPPI CHESS JOURNAL *

A non-profit publication dedicated to the advancement of Chess in Mississippi.

Editor: Vincent D. W. Kerlin
350 Nancy Street
Greenville, Ms. 38701
PH.# 335-1533, leave message

MCA President: Dr. Peyton Crowder
P.O. Box 3214
Miss. State, Ms. 39762
PH.# 323-3124

Schedule of Upcoming Tournaments

July 19 & 20: Mississippi Woodpushers' Team Championship 5 rounds, Round-robin if 6 or less teams, Swiss if 7 or more. T/L 45/2, 30/1. Site: Kosciusko City Library, (Downtown), Kosciusko, Ms. Open only to Miss. teams of 4, 5 w/alt. All players names & ratings must be submitted with entry. Please submit your team & all pertinent info. to the below mentioned address by July 14th, 1980 to be prepared for 1st round. Any odd latecomers receive bye, regardless of ave, rtg. E/Fee, \$40 per 4-man team, \$45 w/alt. Reg. 8:15 - 9:45, July 19. Rds.= 10, 3, 8 on Sat.; 8:30 & 1:30 Sun. \$\$\$G(Based on 6 teams)\$100 First team, \$30 best First, Second, Third, & Fourth boards. \$Alternate as per entries. Players not on or unable to form a team need to contact John Masters if desiring to play; he can assist in forming complete teams. Entries: John E. Masters, P.O. Box 1776, Greenville, Ms. 38701

August 30 & 31: Mississippi Closed State Championship 5 rd. Swiss, w/opt. Fr. nt. rd. Site: Kosciusko City Library, Kosciusko, Ms. See July/August issues of Chess Life for further info. Final event of 1979-80 Magnolia Sweepstakes competition.

Editor's Letter to the Membership

Hopefully everyone has been doing battle on the field of 64 light & dark squares the last 2 months; to be sure, there are many good opportunities in the near future to sharpen your skills at the board and maybe move up into a higher class. You definitely want to play in the Team Championship and the State, for here you will meet the cream of the crop, so to speak. There will be some really stiff competition and that's the way to become a better player. WELCOME to the following new members of the MCA; hope to see many of you in the upcoming competitions: Will Bunker, T. Goff, Joe Lythel Harris, T. Howard, Sonny McGonagill, Dan Murff, and J. Williams. And, due to the responses received about the Postal Tournament, ONE, it appears Mississippi players as a whole prefer over-the-board confrontations. Nuff said. Also, now would be a good time to begin planning some 5-rd. tourneys for the fall, from September to November. Hopefully, Greenville will host one in October, probably the 11th & 12th. Be sure to let John Masters and the Editor know so you can gain the benefits of prior announcement in both the Journal and Chess Life.

THE END OF THE BOOK PLAYER

by Ed Issa

The era of the "book" player in amateur chess is drawing to a close. In the next five years we'll see the return of the "system" player and a flareup of interest in irregular or bizzare openings. Players may still do "home" analysis before tournaments, but it won't be analysis of currently popular systems such as the Sicilian Pelikan or the Ruy Lopez Breyer Defense. Home analysts will probably be using computers to work up lines in openings previously thought to be outrageous.

What is causing the end of the book player? Two things: (1) the flood of published opening theory since 1972 and (2) huge increases in the cost of chess books and pamphlets.

For a player who wants to try a normal opening, there's just too much opening analysis around to be familiar with it all. You either have to be a professional chess player or employ the services of a chess librarian. The Cleveland, Ohio, public library will do research for you for \$25 an hour, if you're interested.

The flood of chess book publishing began about a year after the 1972 Fischer-Spassky match, and it hasn't stopped yet. To prepare for a chess tournament in 1972, a "book" player would consult his trusty MCO-11 or MCO-10 and update his knowledge by consulting Chess Life and Review, Chess Digest and the Informant series. That's about all a player had to do.

It's much more difficult in 1980--in fact, it's practically impossible to properly prepare for tournament play if you're a book player.

Besides MCO, there's the Encyclopedia of Chess Openings (6 volumes), the RHM series of books plus looseleaf supplements, a Yugoslav Codex of the Chess Openings, Pachman's opening series, the Chess Player and New Chess Player series (comparable to the Informants but published more frequently) and even an English translation of the Russian "MCO," Panov and Estrin's Kurs Debyutov.

Then there are many one- or two-volume opening repertoire manuals such as An Opening Repertoire for the Club Attacking Player and An Opening Repertoire for Black. There's a book called King Pawn Openings, another named King Fianchetto Defenses, and several small booklets on the order of A Complete System with 1. P-K4.

Those are just the manuals. Each major opening now has an average of two or three books surveying all lines. And there are innumerable pamphlets on variations and sub-variations.

One example will show how many books are available on a single opening. Say you want to play the Benko Gambit. It's only a footnote in MCO-11. But there's Benko's The Benko Gambit, Zeuthen's Wing Gambit Benoni, another book by David Levy, and even a German volume by Rolf Schwarz. There's also a pamphlet by Zeichel and Crane.

There are at least five books on the Scotch Game and related lines such as the Scotch Gambit and Goring Gambit. And the Scotch is played rather infrequently in master chess. And woe be unto you if you want to play any variation of the Sicilian! There are so many books and pamphlets that you need a very long scorecard to keep track of them all.

The same (in spades) goes for anybody who dares to play 1 e4 or 1 d4. What book player could possibly have the time to study the relevant material? So we see players debuting with 1 c4 or 1 Nf3 or 1 b3.

In most cases it's turned into a situation of "my book versus your book." No matter how many books you have on any one opening, your opponent may be using that one you don't possess.

The second reason for the end of the book player is that it costs too much to be one.

The final volume of the Encyclopedia costs from \$25 to \$30, depending on where you get it. An issue of the Informant costs almost \$20 now. New chess books cost more than rare editions of out-of-print volumes. For example, you can buy a used copy of MCO-10 for about \$15. That's what it will cost you to buy a copy of Sicilian Dragon: Yugoslav Attack from Batsford. And the latter book is only 192 pages long, compared to 514 for MCO-10.

When the 1967 edition of Keene's Flank Openings was published, the US price was \$3. When the 3rd edition came out in 1979, the US price was \$12.55. That's a 318 percent increase.

The tremendous increases in the cost of chess books have been aided by the decline of the dollar when measured against foreign currencies.

Frustrated book players are already turning to bizzare openings. Miles beat Karpov with 1 e4 a6. A few years ago, 1 e4 b6 was considered an irregular, second-rate defense. Now it's a normal and fully viable system.

As white, players are essaying 1 a4. Anderssen's 1 a3 has been resurrected. Next will come renewed interest in the Paris Attack, 1 Nh3. And at least one amateur, Brian Wiggin of Alabama, has played 1 h4 in a rated game. (He won!)

Where will all this lead? See the next article, "The Return of the System Player." In the meantime, 1 f3 anyone?

TOURNAMENT CROSSTABLES

Time Changers
 Dbl. Round Robin
 April 26, 1980
 Greenville, Ms.

	<u>Rtg.</u>									
1. Edward Seid	1400	W4	L2	W5	W3	W2	W5	5--1		
2. John Masters	1685	W5	W1	W3	D5	L1	L3	3½-2½		
3. Jerold Sit	1271	LF	W5	L2	L1	W5	W2	3--3		
4. Vincent D. W. Kerlin	1281	L1	Withdrew.....						0--6	
5. H. L. Dotson	1047	L2	L3	L1	D2	L3	L1	½-5½		

Mississippi High School Championship
 Tupelo, Ms.
 May 11, 1980

1. Robert Shirley	1308	W2	W3	W4				3--0
2. J. Williams	UNR.	L1	W3	W4				2--0
3. T. Goff	NEW	L1	L2	W4				1--0
4. T. Howard	UNR.	L1	L2	L3				0--3

3rd Magnolia Open
 Starkville, Ms.
 May 16-18, 1980

									<u>Solk.</u>
1. Peyton Crowder	1770	W 5	W 6	W 8	D 2	D 7		4--1	16
2. Andrew J. Hood	1880	D14	W10	W 3	D 1	W 5		4--1	13
3. Joe Lythel Harris	Unr.	D 7	WF4	L 2	W 9	W11		3½-1½	15½
4. Michael R. Stewart	1553	D 9	LF3	W14	W13	W6		3½-1½	11
5. Kim E. Hunt	1584	L 1	W12	W11	W 7	L 2		3--2	14
6. Alan Karlak	1259	W11	L 1	W15	W 8	L 4		3--2	13
7. Larry Wright	1659	D 3	W14	W13	L 5	D 1		3--2	12
8. M. A. Farrell	1521	W12	W15	L 1	L 6	W13		3--2	10
9. Mark R. Wilkinson	1385	D 4	LF13	W10	L 3	W14		2½-2½	11
10. Duane Weed	1320	D13	L 2	L 9	W12	BYE		2½-2½	9½
11. Gordon E. Scott	1534	L 6	BYE	L 5	W15	L 3		2--3	9½
12. Daniel Collins	UNR.	L 8	L 5	BYE	L10	W15		2--3	8½
13. Willie Pulphus	UNR.	D10	WF9	L 7	L 4	L 8		1½-3½	15
14. David Ratliff	1311	D 2	L 7	L 4	BYE	L 9		1½-3½	14
15. James E. Evans	1105	BYE	L 8	L 6	L11	L12		1--4	

1st=Peyton Crowder, Andrew J. Hood; \$28.13 each.
 Class C=Michael R. Stewart; \$25.00
 Class D=Alan Karlak; \$25.00
 Unrated=Joe Lythel Harris; \$25.00

Tupelo Tornado
 Tupelo, Ms.

1. Peyton Crowder	1771	W8	W2	W3				3--0
2. Richard Wood	1557	W4	L1	W5				2--1
3. Sonny McGonagill	UNR.	W6	W7	L1				2--1
4. Willie Pulphus	UNR.	L2	W8	W7				2--1
5. James Evans	UNR.	D7	W6	L2				1½-1½
6. Robert Shirley	1179	L3	L5	W8				1--2
7. Brad Shirley	1124	D5	L3	L4				½-2½
8. Dan Murff	UNR.	L1	L4	L6				0--3

TOURNAMENT CROSSTABLES
(con'td.)

Summer Starter Swiss
Greenville, Ms.
May 31, June 1, 1980

1.	Buddy Fowler	1518	W13	W 6	W 3	W 4	D 2	4½-1½	
2.	Gordon E. Scott	1534	W 9	W 5	D 4	D 7	D 1	3½-1½	15½
3.	John Dribben	1590	W14	D 8	L 1	W10	W 7	3½-1½	11½
4.	Peyton Crowder	1770	W10	W 7	D 2	L 1	WF5	3½-1½	
5.	Dennis King	1212	W 6	L 2	W 8	W 9	LF4	3--2	11
6.	Ed Issa	1680	L 5	L 1	W14	W13	W 9	3--2	10½
7.	M. A. Farrell	1504	W11	L 4	W13	D 2	L 3	2½-2½	13½
8.	Walter Clinton	1407	W12	D 3	L 5	LF	W11	2½-2½	9½
9.	H. L. Dotson	1081	L 2	W12	W11	L 5	L 6	2--3	12½
10.	Edward Seid	1524	L 4	L13	W12	L 3	W14	2--3	8½
11.	Thim Kwan	UNR.	L 7	W14	L 9	W12	L 8	2--3	8
12.	Will Bunker	UNR.	L 8	L 9	L10	L11	W13	1--4	9½
13.	Vincent Layton	993	L 1	W10	L 7	L 6	L12	1--4	9
14.	Charles Webb	1147	L 3	L11	L 6	LF	L10	0--5	

1st=Buddy Fowler; \$20.00

2nd + BC=Gordon Scott, John Dribben, Peyton Crowder; \$6.66 each

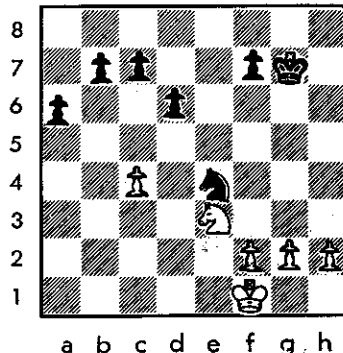
DE=H.L. Dotson, Edward Seid; \$5.00 each

UNR.=Thim Kwan; \$10.00

GAMES

Alekhin's Defence-Accelerated Exchg.=Hunt(1584):Hood(1880)

Starkville 3rd Magnolia Open-May 1980 1.e4 Nf6 2.e5 Nd5 3.d4 d6(normally, this would lead into the Modern Variation) 4.e:d e:d(this accelerated exchange is a new idea; more common, and in line with the theme of the opening is the Q/side pawn thrust c4, driving Blacks K/knight to b6, where it is slightly misplaced, then exchanging in the center and hopefully building a K/side attack while Black attempts to complete his development properly) 5.Bc4 Nb6 6.Bb3 Be7 7.Bf4 O-O 8.Nf3 Bg4 9.Nb-d2 Nc6 10.c3 Qd7 11.O-O Rf-e8 12.Re1 Bf6 13.R:e8+ R:e8 14.Qf1 Qf5 15.Bg3 Na5 16.Bh4 N:b3 17.a:b3 a6 18.Re1 R:e1 19.Q:e1 Kf8 20.B:f6 Q:f6 21.Ne4 Qe6 22.Nf-g5 Q:b3 23.N:h7+ Kg8 24.Ne-f6+ g:f 25.N:f6+ ...Kg7 26.N:g4 Q:b2 27.Ne3 Na4 28.c4 Nc3 29.Nd1 Qe2 30.Q:e2 ...N:e2+ 31.Kf1 N:d4 32.Ne3(See diagram) c6* 33.Ke1 f5 34.f4?! ...Kf6 35.Kd2 Ne6 36.g3 Nc5 37.Kc3 b6 38.Nc2 Ne4+ 39.Kd4 Nf2 40.Kc3 c5 41.Ne3 Ne4+ 42.Kd3 b5 43.Nd5+ Ke6 44.Nc7+ Kd7 45.N:a6 b4 46.Kc2 Kc6 47.Kb3 Nd2+ 48.Kc2 N:c4 49.h3 Ne3+ 50.Kb3 d5 51.N:b4+ c:b 52.K:b4 Kb6 53.Kc3 Kc5 54.g4 f:g 55.h:g N:g4 56.f5 d4+ 57.Kd2 Kc4 58.Kc1 Kc3 O-1



*(b5!! seems more appropriate here, due to the fact that a passed pawn, an outside one at that, can literally be created by force, also due to the fact that W's K/side majority may get through but much too late to be effective or prevent the loss.)

Sicilian-Closed Var.=Collins(UNR.)Farrell(1521)

Starkville 3rd Magnolia Open-May 1980 1.e4 c5 2.d3 Nc6 3.Nc3 Nf6 4.g3 e6
5.Bg2 Be7 6.Bd2 d6 7.Qe2 Nd4 8.Qd1 Rb8 9.Ng-e2 0-0 10.0-0 b5 11.a3 e5 12.f4 Bg4
13.Rf2 Qb6 14.b4 c:B 15.a:b Rf-c8 16.Qe1?? N:c2 17.Be3?? Q:e3 18.Resigns?(Qc1 still
 leaves W material down but there are still a lot of things that could happen.) 0-1

Reti-Unorthodox=Wilkinson(1385)Weed(1320)

Starkville 3rd Magnolia Open-May 1980 1.Nf3 d6 2.c4 e5 3.d3?! c5 4.g3 Nc6
5.Bg2 Ng-e7 6.0-0 Qc7 7.Nc3 g6 8.b3 Bg7 9.Bb2 0-0 10.e3 b6 11.a3 Bb7 12.Qc2 Ra-d8
13.Ra-d1 d5 14.c:d N:d5 15.Nb5 Qe7 16.Rf-e1 Ba6 17.Nc3 N:c3 18.B:c3 Rd6 19.d4 c:d
20.e:d Rf-d8 21.N:e5 N:d4 22.B:d4 B:e5 23.R:e5 R:d4 24.R:d4 Q:e5 25.R:d8+ 1-0

Q's Fianchettoe Defence=Hunt(1584)Scott(1534)

Starkville 3rd Magnolia Open-May 1980 1.e4 e6 2.d4 b6!? 3.a3 Bb7 4.Nc3 d5?!
5.e5 Nc6 6.Bb5 a6 7.Ba4 b5 8.Bb3 h6 9.h4 Ng-e7 10.h5 Nf5 11.Ng-e2 Na5 12.Ba2 Nc4
13.g4 Nh4 14.f4 c5 15.Qd3 c:d 16.N:d4 Bc5 17.Nc-e2 B:d4 18.N:d4 N:b2 19.B:b2 Ng2+
20.Kf2 N:f4 21.Qg3 Qg5 22.Bc1 Q:e5 23.Q:f4 Q:f4 24.B:f4 Ke7 25.Ra-e1 Ra-c8
26.Bd2 Kf6 27.Bb3 e5 28.Rh-f1 e4 29.Bb4 g5 30.Kg3+ Ke5 31.c3 R:c3+ 32.B:c3 Rc8
33.Rf5+ Kd6 34.Bb4+ Kc7 35.Rc1+ Kb8 36.R:c8+ K:c8 37.R:f7 Kb8 38.Rf6 Bc8 39.R:h6 e3
40.Rh8 Kb7 41.R:c8 K:c8 42.h6 e2 43.h7 e1=Q+ 44.B:e1 Kc7 45.h8=Q Kb6 46.Qd8+ Kb7
47.B:d5+ Ka7 48.Qc7++ 1-0

Caro-Kann Defence=Wilkinson(1385)Harris(UNR.)

Starkville 3rd Magnolia Open-May 1980 1.Nf3 c6 2.c4 d5 3.c:d c:d 4.d3 Bg4
5.g3 B:f3 6.e:f e5 7.Bg2 Bb4+ 8.Nd2 Nf6 9.b3 0-0 10.0-0 Nc6 11.a3 Bc3 12.Rb1 Rc8
13.Re1 Re8 14.Bb2 Nd4 15.b4 b5 16.f4 e:f 17.R:e8+ Q:e8 18.Nf3 B:b2 19.R:b2 N:f3+
20.B:f3 f:g 21.h:g Rc3 22.Re2 Qc8 23.Kg2 a6 24.a4 a6 25.Ra2 Qf5 26.a:b a:b 27.Ra8+
...Kg7 28.Ra5 R:d3 29.Qe2 h5 30.R:b5 g5 31.B:d5 R:d5 32.Rb8 Ng4 33.Qb2+ Ne5 34.Re8
...h4 35.Qc3 h3+ 36.Kh2 g4 37.Qb2 Kf6 38.Rb8 Qf3 39.Rb6+ Kg7 40.Rg6+ K:g6 41.Qc2+
...Kg7 42.Qe4 Q:e4 43.f3 Qe2+ 0-1

K's Indian Defence=Dotson(1047)Masters(1685)

Greenville Time Changers Dbl. Round-Robin-April 1980 1.d4 Nf6 2.c4 g6 3.Nf3 Bg7
4.g3 d6 5.Bg2 0-0 6.0-0 c6 7.Nc3 Qa5 8.e3?! Na6 9.Bd2 Qh5 10.Nh4 Bg4 11.f3 Be6
12.Qe2 g5 13.d5 c:d 14.c:d N:d5 15.N:d5 g:h 16.N:e7+ Kh8 17.g4 Qg6??? 18.N:g6+ h:g
19.Bc3 Ra-c8 (Now the onus rest on White to win a won game) 20.Ra-c1??(B:g7+ is the 1st
 step toward winning; every exchange of material makes Black's job that much harder)...B:c
21.b:c Bc4 (White now has a positional weakness in the doubled pawns on the b-file and give
 some of the won material back) 22.Qd2 B:f1 23.B:f1 Rc6 24.e4?(B:a6) Nc7 25.Qh6+ Kg8
26.Q:h4 Ne6 27.c4??(blocks in the Bishop; even when material up, your pieces must have
 active, mobile positions of development) Kg7 28.g5 Rh8 29.Qf2?(Qg3 holds the g-pawn)
1/2-1/2

Nimzo-Indian Defence=Crowder(1770)Wright(1659)

Starkville 3rd Magnolia Open-May 1980 1.d4 Nf6 2.c4 e6 3.Nc3 Bb4 4.Qc2 c5
5.a3 B:c3+ 6.b:c d5 7.e3 Nb-d7 8.Nf3 Ne4 9.c:d e:d 10.Bd3 Nd-f6 11.c4 Be6 12.0-0 h
13.c:d B:d4 14.Bb5+ Kf8 15.d:c h4!? 16.Bb2 h3!? 17.Rf-d1 h:g 18.Bc4 Rh5 19.B:d5 R:d
20.B:f6 N:f6 21.R:d5 Q:d5 22.K:g2 Rd8 23.Qe2 Ne4 24.Kg1 N:c5 25.Nd4 Qg5+ 26.Kf1 Qh4
27.f3 Qh3+ 28.Qg2 Qd7 29.Rd1 Kg8 30.Qc2 Qh3+ 31.Qg2 1/2-1/2

Additional Tournament Announcements

July 27, 1980 (Sunday) Spangled Pandemonium. Three round Swiss system event at Starkville, Ms. Site: Memorial Hall on the MSU campus. Registration from 9 AM to 10 AM. See next Chess Life for additional details. Magnolia Sweepstakes event.

Sept. 20-21, 1980. Tupelo Gum Tree Open. 5SS, 50/2, EF \$16. Prizes 335 based on 30 entries. 75-60-40. C/25-15, D/25-15, E/25/15, Unr. 25/15. Reg. 8 AM to 9 AM Sept. 20. Rounds at 9-1-5 and 9-1. Entries to Robert Shirley, 207 North Fester, Tupelo, Ms. 38801. Magnolia Sweepstakes event. Site: Post Office.

Oct. 18 and 19, 1980. Benke Billy Open. 5 round Swiss system with optional Friday night round 1. All games must begin 1. P-Q4, N-KB3 2. P-QB4, P-B4 3. P-Q5, P-QN4 4. PxP. See Chess Life for additional details. Magnolia Sweepstakes event. Site: Memorial Hall, MSU campus, Starkville, Ms.

The Mississippi Team Tournament and the Mississippi State Closed Championship will both be non-smoking events due to the rules of the Kosciusko Municipal Library. The tournament room has a convenient rear door, so smokers should be able to function without too many problems.

The motel nearest the tournament site is Lindsay's Motel and Restaurant. It is located at the intersection of Highway 35 and the Natchez Trace.

MAKE YOUR PLANS TO ATTEND THE TEAM TOURNAMENT. IF YOU ARE NOT ON A TEAM, CONTACT JOHN MASTERS (OR PEYTON CROWDER.) SOME WAY WILL BE FOUND TO INCLUDE YOU IN THIS EVENT.

Editor Kerlin is planning a "really big" issue for July-August. If you have something you would like to see included contact Vince.

MISSISSIPPI'S TOP TEN ACCORDING TO THE JUNE RATING SUPPLEMENT

1. Warren Porter	2004	6. Peyton Crowder	1850
2. Hubert Puckett	1977/9	7. Demetrius Hale	1816
3. Bill Trim	1914	8. William Bailey	1778
4. Gunnar Woodard	1884	9. Stan Perkins	1777
5. Dale Jones	1872	10. Barry Gold	1739

THE SECOND TEN

11. Laird Woodard	1733	16. Larry Wright	1690
12. Jimmy Gorton	1726	17. James Fry	1684
13. William Killcrease	1721	18. Ed Issa	1680
14. Greg Vega	1720	19. Gary Ladner	1660
15. John Masters	1699	20. Charles Dean	1652

Note: These lists consist of players listed as Mississippians in the June rating supplement. Some non-MCA members are included.

This has turned out to be the "President's Page" as Vince left it blank and I had to fill it in with something!

Peyton Crowder

Dr. Peyton Crowder, President, MCA
Box 3214, Miss. State, Ms. 39762

Vincent D. W. Kerlin, Editor
350 Nancy Street, Greenville, Ms. 38701

John Masters, Vice-President, Tournament
Organizer
Huntcliff Manor Apt. F6?!
Clinton, Ms. 39056

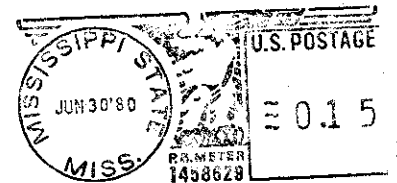
Jay Gilbert, Secretary-Treasurer
P.O. Box 1202, Clarksdale, Ms. 38614

Judson Farmer, Parliamentarian
1229 Lynnwood Drive, Jackson, Ms. 39206

"The South shall Rise Again!"

Coming up next issue: Yearly index of Players, Games, and Openings; Update on the Magnolia Sweepstakes competition points standings; and, of course, more CHESS!

SUBSCRIPTIONS: \$5 per year
RETURN: Box 3214
Miss. State, Ms. 39762



SPENCER STEPHEN D

8102

070

8479 CEDARBRUSH
SOUTHAVEN

MS 38671