

# MISSISSIPPI CHESSLETTER

vol. 6 no. 5 June-July 1979

President:  
U.J. Gilbert  
P.O. Box 1202  
Clarksdale, MS 38614

Secretary-treasurer:  
Warren B. Porter  
Box 12222  
Jackson, MS 39211

Editor:  
Ed Issa  
P.O. Box 1434  
Greenville, MS  
38701

Vice President:  
Paul J. Waldowski  
433 Pinelawn Dr.  
Biloxi, MS 39531

Parliamentarian:  
Judson Farmer  
1229 Lynwood Dr.  
Jackson, MS 39216

## TOURNAMENTS

JULY 21-22

1979 ARKANSAS OPEN

HOT SPRINGS, AR

5-SS, 45/2. Downtowner Motor Inn, 135 Central Ave., Hot Springs, AR 71901. In 2 sections: Open \$\$ (Based on 20) 100-50, \$40 to top B, \$20 to top C/below. Trophies to all above. Reserve \$\$ 100-50, \$40 to top D/E, \$20 to top UNR. Trophies to all above. Open to below 1600 players only. EF: \$15 both sections. Reg. 8-9 a.m. July 21. Rds. 9:30-2:30-7:30, 9-2. ENT. Danny Williamson, 2316 S. Pine, Little Rock, AR 72204.

AUG. 31-SEP. 2

MISSISSIPPI STATE CHAMPIONSHIP

STARKVILLE

For information about the Mississippi State Championship and state class championships, or the MCA business meeting, see tournament ad on page 37 this issue.

OCT. 6-7

KNOB OPEN

PINE BLUFF, AR

5-SS, 45/2. Best Western Motel, U.S. 65-B N., Pine Bluff, AR 71602. \$\$ (Based on 40) 100-50, \$ 50 to top B, \$50 to top C, \$50 to top D/E, \$40 to top UNR. Trophies to all above. EF: \$15 by Sep. 29, \$17 at site. Reg. 8-9 a.m. Oct. 6. Rds. 9:30-1:30-6:30, 8:30-1:30. ENT. Donny Gray, Rt. 8, 1645 Whippoorwill Lane, Pine Bluff, AR 71602. Ph. 501-247-3461.

MISSISSIPPI CHESSLETTER is the official publication of the Mississippi Chess Association, a non-profit organization promoting chess in Mississippi. Membership is \$5 per year and is payable to the secretary-treasurer.

# CHESS LIFE

## MASTERS CAPTURES TROPHY

A total of \$98 was raised for the MCA at the Greenville MCA membership tournament, held June 23. John E. Masters of Clinton won the first place trophy on tie breaks over Stan Perkins; both went undefeated in the four-round event. Edward Seid of Greenville won the trophy for the best performance by a player 13 and under. Many games were decided by time pressure, as the 50/1 limit proved rather fast. Twenty-two persons played in the non-USCF tournament. Ed Issa and Vincent D.W. Kerlin directed.

### SENTEF LEADS FIELD

Joe Sentef, a Jackson medical student, won all five games to earn first at the Magnolia Open at Starkville June 16-17. Closest behind were Gunnar Woodard and Dale C. Jones, with 3½ points each. Fourteen players participated.

### CROWDER, SIERICHS TOPS

Peyton Crowder of Starkville and Bill Sierichs of Louisiana (formerly of Jackson) were the leaders in the Dixie Zephyr III, played May 6 at Starkville. Crowder had the edge in Solkoff points. Nine persons played in the three-round tornado. Crowder and Larry M. Wright directed.

### MAGNOLIA OPEN

		#1	#2	#3	#4	#5	Score
1 Joe Sentef	2061	W 9	W10	W 2	W 3	W 4	5
2 Gunnar Woodard	1812	W12	W 4	L 1	D 7	W11	3½
3 Dale C. Jones	1829	W14	D 7	W 5	L 1	W10	3½
4 Moshe Khatena	1882	W 6	L 2	W 7	W 8	L 1	3
5 Mart Shearer	1216	W11	W 6	L 3	W10	L 2	3
6 Gordon E. Scott	1472	L 4	L 5	W14	W11	W12	3
7 Keith Killcrease	1677	W14	D 3	L 4	D 2	D 8	2½
8 Bruen Tucker	UNR.	L 3	W11	W12	L 4	D 7	2½
9 M.A. Farrell	1487	L 1	W14	L10	D12	W13	2½
10 Peyton Crowder	1755	W13	L 1	W 9	L 5	L 3	2
11 U.J. Gilbert	1549	L 5	L 8	W13	L 6	W14	2
12 Steve W. Shearer	1328	L 2	W13	L 8	D 9	L 6	1½
13 Robert Shirley	UNR.	L10	L12	L11	W14	L 9	1
14 Gray Gilbert	1005	L 7	L 9	L 6	L13	L11	0

### DIXIE ZEPHYR III

	Rtg.	1	2	3	Score	Solk.
1 Peyton Crowder.....	1755	W3	W7	D2	2½ - 1½	5½
2 William Sierichs(La)..	1519	W5	W8	D1	2½ - 1½	4½
3 Richard Wood.....	1473	L1	W9	W8	2 - 1	4
4 Randy Walls.....	1172	Bye	L6	W7	2 - 1	2½
5 John Barrett, Jr.....	1397	L2	Bye	D6	1½ - 1½	4
6 Larry Wright.....	1525	L7	W4	D5	1½ - 1½	3½
7 Gordon E. Scott.....	1472	W6	L1	L4	1 - 2	5½
8 Howard C. Coleman.....	Unr	W9	L2	L3	1 - 2	5
9 M. A. Farrell.....	1487	L8	L3	Bye	1 - 2	3

GREENVILLE MCA MEMBERSHIP TOURNAMENT

		#1	#2	#3	#4	Score	
1	John E. Masters	1688	W 5	W 6	W12	W10	4
2	Stan Perkins	1710	W20	W10	W 3	W 4	4
3	Steve W. Shearer	1328	W15	W 9	L 2	W12	3
4	Dennis King	UNR.	W17	W19	W 8	L 2	3
5	Steve Brandon	906	L 1	W13	W15	W16	3
6	Jerold B. Sit	1200	W18	L 1	W17	D 8	2½
7	Edward Seid	1110	W16	L 8	W14	D 9	2½
8	U.J. Gilbert	1549	W21	W 8	L 4	D 6	2½
9	Tom D. Wilcox	UNR.	W22	L 3	W11	D 7	2½
10	Mart Shearer	1216	W13	L 2	W18	L 1	2
11	Vincent D.W. Kerlin	1263	W14	L 4	L 9	W19	2
12	Mabry Fowler Jr.	1246	W19	W20	L 1	L 3	2
13	Charles Webb	UNR.	L10	L 5	W21	W18	2
14	William Evans	UNR.	L11	W22	L 7	W20	2
15	Tommy Gilbert	UNR.	L 3	D16	L 5	W21	1½
16	Jim Sikes	UNR.	L 7	D15	W20	L 5	1½
17	Bill Tolson	UNR.	L 4	W19	L 6	WD	1
18	H.L. Dotson Jr.	UNR.	L 6	W21	L10	L13	1
19	Shane Lake	UNR.	L12	L17	W22	L11	1
20	Gray Gilbert	1015	L 2	L12	L16	L14	0
21	James Rone	UNR.	L 8	L18	L13	L15	0
22	Lee Cave	UNR.	L 9	L14	L19	WD	0

## PRESIDENT'S CORNER

The efforts of MCA members to get our organization moving are beginning to show--the MCA is growing.

About 25 new members have been added to our membership rolls since the last edition of the Mississippi Chessletter. The MCA's net membership gain is less--about 10--because of members who have not renewed their expired memberships. But finally, for the first time this year, the MCA has more than 100 members. That's a start in the right direction, but we need more for a viable organization.

The MCA is working with Robert Shirley of Tupelo to start a chess club in that area. We will work with you to start one in your area, too. Write me if you need help.

Due to the lack of response, the proposed Mississippi versus Alabama match has been cancelled. We are still interested in getting a match together, but we need players to do so. A date could be selected after the state championship.

Plan to attend the state championship and state class championships this year. Bring a friend or two. We have an excellent free playing site at Starkville, so support your chess organization--you may win the state championship in your rating class. A good turnout may put the MCA out of the red and into the black. And the more players, the more fun.

--U.J. Gilbert

# EASY CHESS

EDITOR'S NOTE: Guest columnist this issue is USCF master Rudy Blumenfeld of New York, who annotated the following game between two Greenville, Miss., players. Mr. Blumenfeld runs a chess annotation and analysis service and says that his annotations are normally more extensive than the notes to the game below.

## THE ELEMENT OF TIME

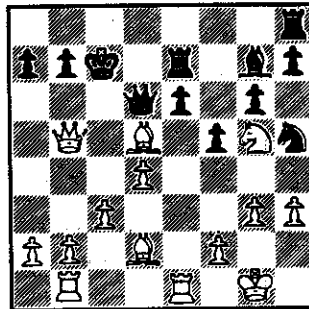
by Rudy Blumenfeld

The element of time, which calls for a quick, smooth development, shouldn't be ignored in the opening unless there is a good reason. In this game, White's third move is weak, but his opponent doesn't take advantage of it. Black also replies with a bad move to White's weak ninth move, and follows up with mistakes--first dropping a pawn and then exposing his King. In the end it's the Black King's exposed position which should lead to a decisive gain of material for White.

White: Walter Clinton (1101) Black: Edward Seid (1110) Unrated game played on the telephone, Greenville, Miss., Dec. 2, 1978

### SICILIAN DEFENSE

- 1 e4 c5
- 2 Nf3 Nc6
- 3 g3? (a) e6?! (b)
- 4 d3 g6! (c)
- 5 Bg2 Bg7
- 6 0-0 Nge7
- 7 Nbd2 (d) d5
- 8 Re1 Bd7
- 9 e:d5?! (e) N:d5? (f)
- 10 Ne4! Qc7? (g)
- 11 N:c5 Qb6? (h)
- 12 N:d7 K:d7
- 13 Ng5 Raf8



Position after

- 25 B:d5!
- 14 Qf3?! (i) Ne5
- 15 Qd1 f6
- 16 Nf3 Ng4

- 17 Qe2 f5? (j)
- 18 Rb1 Re8
- 19 Bd2 Qc5
- 20 h3 Ngf6
- 21 c3 Nh5
- 22 d4 Qd6
- 23 Ng5 Re7
- 24 Qb5+ Kc7 (k)
- 25 B:d5! (diagram) e:d5 (l)
- 26 R:e7+ Q:e7
- 27 Re1! (m) Qd7
- 28 Ne6+ Kc8
- 29 Q:d7+ K:d7
- 30 g4! Re8
- 31 Nc5+ (n) 1-0

- a) White is wasting a tempo to develop his Bishop, which can be developed on the f1-a6 diagonal after the usual 3 d4.
- b) Best reply is 3...Nf6 4 Nc3 (Not 4 e5? Ng4 5 Qe2 Qc7 winning the Pawn) 4...d5!, bringing a second Pawn in the center without obstructing the QB.
- c) This move is playable because the Bishop will control the long Black diagonal.
- d) White's set-up is a King's Indian Reversed.
- e) White trades off his central Pawn. Better was 9 Nf1.
- f) Good was 9...e:d5! with a space advantage. Now White gets the initiative.
- g) Better was 10...Qe7, avoiding both 11 N:c5 and 11 Nd6, although White is better after 11 Bg5.
- h) Now Black's King will get exposed in the center. Better was 11...0-0.
- i) White is too anxious to attack. Good was 14 Rb1.
- j) Weakening even more the position. Better was 17...Re8 (Not 17...e5? 18 N:e5+ and 19 B:d5).
- k) More resistance was offered by 24 Qc6. Now White breaks Black's position in the center.
- l) 25...Q:d5 26 Q:d5 wins the Rook.
- m) The Rook and the Knight will cooperate most effectively.
- n) Black resigns. In addition to the piece, White also picks up the Pawn at b7.

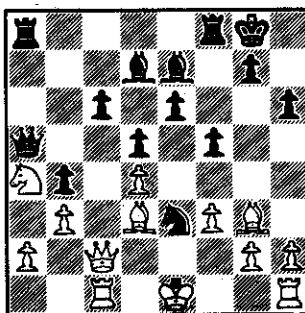
# PORTER PONDERERS

By Warren B. Porter Jr.

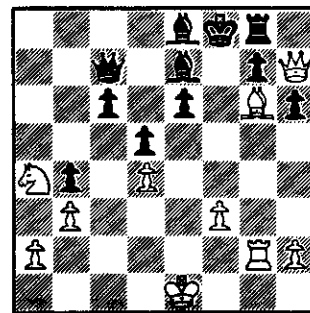
EDITOR'S NOTE: The two games that follow are from a recent simultaneous exhibition tour by Grandmaster Larry Christiansen for Church's Fried Chicken. Former state champion Warren Porter defeated Christiansen, while Ken Breland of Hattiesburg held him to a draw. The Breland game is not available at present, but we present the Porter game, plus one by Albert E. Gower of Hattiesburg. Annotations of Gower's game are mostly by Gower, while notes to Porter's game are his own.

QUEEN'S GAMBIT DECLINED White: Porter (1898) Black: Christiansen (2475)

1 c4	e6
2 Nc3	d5
3 d4	Nf6
4 Bg5	Be7
5 e3	h6
6 Bh4	0-0
7 Nf3	Nbd7
8 Qc2	c6
9 Rc1	a6
10 Bg3(a)	b5
11 cb(b)	ab!
12 Ne5(c)	Nxe5
13 Bxe5	b4
14 Na4	Qa5
15 b3	Bd7
16 Bd3	Ng4
17 Bg3	f5
18 f3(d)	Nxe3(diagram No. 1)
19 Qe2	f4
20 Bxf4	Nxg2+
21 Qxg2	Rxf4
22 Qg6(e)	Rf6
23 Qh7+	Kf7
24 Rg1	Rg8
25 Rg6	Qc7(f)
26 Rc2	Be8
27 Rcg2	Rxg6
28 Bxg6+	Kf8(diagram No. 2)
29 Bxe8	Qf4
30 Qg6	Qc1+(g)
31 Ke2	Qf4
32 Bxc6	Bg5(h)
33 Qe8	1:0



No. 1—Position after 18...N:e3



No. 2—Position after 28...K:f8

- a) This opening, with .. h6 and Bh4 added, is a D64 note 26 from ECO. 10 a3 is the main line and is evaluated a small plus for white. 10 a4 turned out equal, 10 Bd3 and 10 c5 gave White a pull. The text wasn't mentioned; it does nothing to stop Black's Q side pawns.
- b) 11 cd is probably better as it turned out.
- c) White starts drifting for several moves here.
- d) Played to allow 00, & Be1 with idea of a3 or to prepare for e4. I wish I could say I looked ahead 14 moves to justify the pawn sac, but I just outright hung it.
- e) It still takes a lot of luck for a mere mortal to beat an IGM, even in a simul. Perhaps Back misjudged this position when he ripped on move 18. Maybe he could draw if he didn't go for a win. As it went everything White has gets into the game.
- f) It seems Black could have improved with 22 .. Bg5 instead of 22 .. Rf6. His bishop doesn't really help here. White's next activates the QR.
- g) A check that shouldn't be cashed. 30 .. Bg5 would give White problems.
- h) Too late for that now.

ENGLISH White: Christiansen (2475) Black: Gower (1535)

1 c4 Nf6(a)  
2 Nc3 e6  
3 e4(b) c5(c)  
4 e5 Ng8  
5 Nf3(d) Nc6  
6 d4(e) dxc  
7 Nxd4 Nxe5  
8 Ndb5 d6(f)  
9 Be3 Nf6(g)  
10 c5(h) dxc(i)  
11 Qxd8+ Kxd8  
12 0-0-0(j) Bd7  
13 Bf4 Neg4  
14 Bg3(k) a6  
15 Nd6(l) Bxd6  
16 Rxd6 Ke7(m)  
17 Be2 Nxf2  
18 Rxd7(n) Nxd7  
19 Bxf2 Rhd8(o)  
20 Bf3 Rab8  
21 Ne4 b6  
22 Re1 Ne5 (p)  
23 Be2 Nd3+  
24 Bxd3 Rxd3(q)  
25 Nc3 Rbd8  
26 Bg3 R8d7?(r)  
27 Na4 Rb7  
28 Kc2 Rd4  
29 b3 f6  
30 Bf2 Rd5  
31 Re4 Kd6(s)  
32 Nc3 Rg5(t)  
33 g4 f5(u)  
34 Bg3+ Kd7  
35 gf ef(v)  
36 Re5 g6  
37 Nd5(w) Kc6  
38 Nf6(x) h5(y)  
39 Re6+ Kb5  
40 a4+ Kb4  
41 Nd5+ Ka3  
42 Re1 Ka2  
43 Nc3+ Resigns(z)

- a) Hoping to transpose into a Nimzo-Indian Karpov played this move against Korchnoi in the 1974 and 1978 matches.
- b) Korchnoi's move in game 29 of the 78 match.
- c) I wasn't happy about being on this side of the board.
- d) The Korchnoi-Karpov game continued 5 d4 cd 6 Qd4. Larry told me after the game he thought this was better but momentarily forgot this continuation.
- e) Larry sacrificed the pawn knowing he would outplay me later. This gambit has been played a lot recently.
- f) Keeps the knight out of d6. Against Timman at Las Palmas in 1977, Karpov played f6. Against Miles in a BBC game, he played a6 and after 9 Nd6 Bd6 10 Qd6 f6. Both games were eventually drawn.
- g) .. Be7 idea of 10 c5 dc 11 Qd8 Bd8 has problems after 12 Nd6 and 13 Bc5.
- h) Larry sacrificed a second pawn to open lines and prevent Black from castling.
- i) Overcome by greed I accepted. After all, how often do you get a chance to be two pawns up against a grandmaster?
- j) Naturally!
- k) I had hoped for 14 Ba3 Nxe3 but that was too much to expect.
- l) The knight finally gets there anyway.
- m) Black finally connects his rooks.
- n) He didn't even slow down to make this move as he walked past.
- o) Judging by White's next move this was probably the wrong rook. .. f6 with the idea of e5 also looks good.
- p) Black attacks! I started to get excited about the possibility of winning.
- q) Without having to face the two bishops, Black has an easier time.
- r) 26 .. Rc8 & if 27 Na4, b5 28 Nb6 Rc6, idea of f6 & e5.
- s) Probably the losing move. It cuts off the rook's retreat and exposes the king. 31 .. e5, restricting the bishop and preparing for Ke6 and f5 is one idea. After

..e5 another idea is K-d7-c6 freeing the rook.

t) .. Rf5 looks better.

u) Restricts its own rook even more. .. h5 looks better.

v) Rxf5 keeps the rook active.

w) Ne4 was also possible.

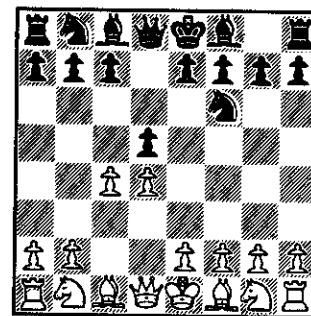
x) The rook is stalemated.

y) A Poor move but what can black do? Since this leads to mate, ..Rf7 seems a little better.

z) .. Ka3 44 Ra1+ Kb4 45 Nd5+ Ka5 46 Be1 mate.

# GAMES

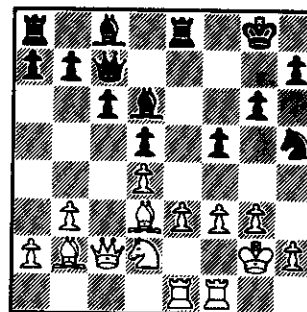
QUEEN'S GAMBIT DECLINED White: Masters (1688) Black: Brandon (906) GMT  
 1 d4 d5 2 c4 Nf6 (Marshall's Defense. It is considered inferior to  
 2...e6 or 2...c6, but Black may equalize if White  
 is not careful. The strongest line for White runs  
 3 c:d N:d5 4 Nf3 Bf5 5 Qb3! and now A. 5...e6  
 6 Nc3 Nc6 7 e4 N:c3 8 e:f5 Nd5 9 a3 Qd6 10 Q:b7  
 Rb8 11 Qa6 Be7 12 Bb5 Rb6 13 B:c6+ R:c6 14 Qd3  
 e:f 15 0-0 0-0 16 Qf5; or B. 5...Nc6 6 Nbd2 Nb6  
 7 e4 Bg6 8 d5 Nb8 9 a4 a5 10 Ne5 N8d7 11 Bb5  
 Qc8 12 Ndc4, with advantage to White in both  
 cases.) 3 c:d N:d5 4 e4!?! Nb6?! (Not the best.  
 4...Nf6 is the critical line: 5 Bd3 e5! 6 d:e  
 /Is 6 Ne2 better?/ 6...Ng4 7 Nf3 Nc6 8 Bg5 Be7  
 9 B:e7 Q:e7 10 Nc3 Nc:e5 11 N:e5 Q:e5 12 h3  
 Nf6 13 Qd2 Bd7 14 Qe3 Qa5 15 0-0-0 0-0-0=  
 5 Bd3 (5 Nc3 e6 6 Nf3 Nc6 7 Bd3) 5...Nc6 6 Ne2?! e5 7 Be3 Bb4+ 8 Nc3  
 8...e:d 9 N:d4 N:d4 (9...Ne5 10 Be2 0-0) 10 B:d4 Q:d4?? (10...0-0  
 11 Bc2 Qg5) 11 Bb5+ Bd7 12 Q:d4 B:c3+ 13 b:c3 B:b5 14 Qe5+ Kf8 15 Q:b5  
 (1-0, 20).



Position after 2...Nf6

DUTCH DEFENSE White: Seid (1110) Black: Evans (UNR.) G'VILLE MEMB. TMT.  
 1 c4 f5 2 Nc3 e6 3 d4 (If White plans to fianchetto his KB, then 3 g3  
 is a more exact move order) 3...Nf6 4 Bg5 Be7 5 Nf3 b6?! 6 g3 Bb7 7 Bg2  
 0-0 8 0-0 d5 9 c:d e:d 10 Qc2 Ne4 11 B:e7 Q:e7 12 N:e4 f:e4 13 Ne5 Nc6?  
 14 N:c6 (1-0, 21).

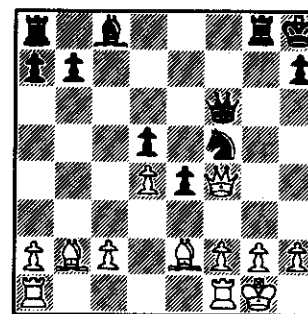
DUTCH DEFENSE White: Wilcox (UNR) Black:  
 S. Shearer (1328) GREENVILLE MEMB. TNMT.  
 1 c4 f5 2 e3 e6 3 Nc3 Nf6 4 d4 Be7 5 Bd3 0-0  
 6 Nf3 d5 7 c:d N:d5 8 N:d5 e:d5 9 0-0 Nd7  
 10 Qc2 g6 11 b3 Re8 12 Bb2 c6 13 Nd2 Nf6 14 f3  
 Bd6 15 Rael Qc7 16 g3 Nh5 17 Kg2 (diagram)  
 17...B:g3 18 h:g3 Q:g3+ 19 Kh1 Qh3+ 20 Kg1 Ng3  
 21 Kf2 Qh2#



Position after  
17 Kg2

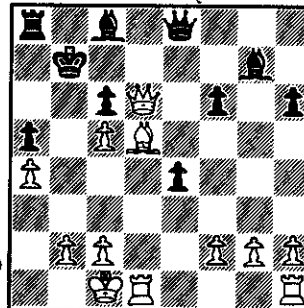
ENGLISH White: Seid (1110) Black: Wilcox (UNR.) GREENVILLE MEMB. TNMT.  
 1 c4 c5 2 Nf3 e6 3 Nc3 Nf6 4 g3 Nc6 5 Bg2 Be7 6 0-0 0-0 7 d4 c:d 8 N:d4  
 (This type of position usually arises out of a "Benoni Declined" as in  
 1 d4 Nf6 2 c4 c5 3 Nf3 c:d 4 N:d4 e6 5 g3 Nc6 6 0-0 Be7 7 Nc3) 8...N:d4  
 9 Q:d4 a6 10 Ne4 Qc7 11 Bf4 Qd8 12 Be5 d5 13 c:d N:e4 14 B:e4 f6 15 Bf4  
 e5 16 B:e5 f:e5 17 Q:e5 Bf6 18 Qh5 h6 19 Rab1 (½-½).

GRECO COUNTER-GAMBIT White: Webb (UNR.) Black:  
 M. Shearer (1216) GREENVILLE MEMBERSHIP TNMT.  
 1 e4 e5 2 Nf3 f5!?! 3 d4?! (3 e:f, 3 N:e5 or  
 3 Bc4 are better) 3...e:d? (3...f:e!?! 4 N:e5  
 Nf6, threatening d6. Two sample lines: A.  
 5 Bg5 d6 6 Nc4 Be7 7 Be2 0-0 8 0-0 c6 9 c3  
 Be6 10 Nbd2 Nbd7= B. 5 Be2!?! d6 6 Bh5+ g6  
 7 N:g6+ h:g6 8 B:g6+ Ke7 9 Bg5 Bh6!) 4 N:d4  
 f:e?! 5 Nc3?! (5 Qh5+ g6 6 Qe5+ Qe7 7 Q:h8  
 Nf6 8 Bh6) 5...Bb4 Qg4 d5?! (6...Qe7 5 Bg5  
 Nf6) 7 Q:g7 B:c3+ 8 b:c3 Qf6 9 Q:c2 Ne7  
 10 Be2 0-0 11 Qg3+ Kh8 12 0-0 Rg8 13 Qe3 Nbc6  
 14 Bb2 N:d4 15 c:d4 Nf5 16 Qf4 (diagram) R:g2+  
 17 K:g2 Nh4+ 18 Q:h4 Q:h4 19 a4 Bh3+ 20 Kh1  
 B:f1 21 R:f1 Rf8 22 f3 e:f3 23 B:f3 Qh3 (0-1).



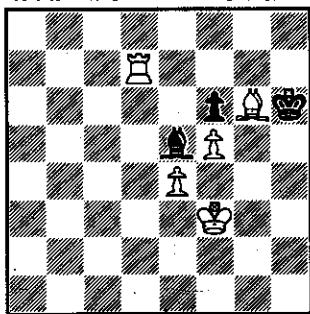
Position after 16 Qf4

GRECO COUNTER GAMBIT White: Perkins (1710) Black: M. Shearer (1216) GMT  
 1 e4 e5 2 Nf3 f5?! 3 Bc4 Nf6? (3...f:e 4 N:e5 and there are two main  
 lines: A. 4...d5 /The safe line./ 5 Qh5+ g6 6 N:g6 Nf6 7 Qe5+ Be7 8 Bb5+  
 c6 9 N:e7 Q:e7 10 Q:e7+ K:e7 11 Be2 Rg8 12 g3 c5!? B. 4...Qg5 5 d4  
 Q:g2 6 Qh5+ g6 7 Bf7+ B1. 7...Ke7 8 Bg5+ Nf6 9 Qh4 Q:h1+ 10 Kd2 Bg7  
 11 Nc3 Q:a1 12 B:f6 B:f6 13 Nd5+- B2. 7...Kd8 8 B:g6 Q:h1+ 9 Ke2 Q:c1  
 10 Nf7+ Ke8 11 N:h8+ h:g6 12 Q:g6+ Kd8 13 Nf7+ Ke7 14 Nc3! Q:c2+ 15 Ke1  
 d6 16 Nd5+ Keres.) 4 N:e5 Qe7 5 d4 f:e 6 Bf7+ Kd8  
 7 Bb3 d5 8 Nc3 Be6 9 Bg5 c6 10 Na4 h6? 11 Ng6 Qe8  
 12 B:f6+ g:f6 13 N:h8 Bg7 14 Nc5 B:h8 15 N:b7+  
 Kc7 16 Nc5 Bc8 17 Qd2 Bg7 18 Qf4+ Kb6 19 a4 a5  
 20 Qd6 Nd7 21 B:d5 N:c5 22 d:c5+ Kb7 23 0-0-0!  
 (diagram) 23...Ra6 24 Bc4 Ra7 25 Rhel f5 26 Re3  
 Ka8 27 Rb3 h5?? (27...Rb7 28 R:b7 K:b7!) 28 Qb8#.



Position after 23 0-0-0

ENGLISH White: Sentef (2042) Black: Brown (1903) JACKSON VS BATON ROUGE  
 1 c4 Nf6 2 Nc3 c5 3 Nf3 Nc6 4 g3 g6 5 Bg2 Bg7 6 0-0 0-0 7 a3 a6 8 d4 c:d  
 9 N:d4 Qc7 10 e4 d6 11 Rb1 (Be3) Bg4 12 f3 Bd7 13 N:c6 b:c6 14 b4 Ng4  
 15 Qd2 Qa7+ 16 Kh1 Ne3 17 Q:e3 Q:e3 18 B:e3 B:c3 19 Rfd1 a5 20 c5 a:b  
 21 a:b Be6 22 c:d e:d 23 R:d6 Ba2 24 Rcl B:b4 25 Rd:c6 Be6 26 h3 Rfd8  
 27 f4 Rd3 28 Bf2 Bd2 29 Rd1 Bb3 30 Rb1 Be3 31 Bf1  
 B:f2 32 B:d3 Ba4 33 Rc4 Bd7 34 Kg2 Be3 35 Kf3 Bd2  
 36 Ke2 Ra2 37 Rc2 R:c2 38 B:c2 Bc3 39 g4 h5 40 f5  
 g:f 41 g:f f6 42 Kf3 Be5 43 Rb7 Bc6 44 Bb3+ Kh8  
 45 Ra7 Bd4 46 Rc7 Bb5 47 Bf7 Bf1 48 h4 Be5 49 Rc8+  
 Kg7 50 B:h5 Bd3 51 Bg6 Bb1 52 h5 Ba2 53 Ra8 Bg8  
 54 h6+ K:h6 55 R:g8 Ba1 56 Ra8 Bd4 57 Rd8 Be5  
 58 Rd7 (diagram) B-ANY 59 Rh7+ Kg5 60 Rh5#



Position after 58 Rd7

LARSEN'S OPENING White: Herbert (1762) Black: Porter (1898) JXN  
 VS BATON ROUGE. 1 Nf3 d5 2 b3 Nd7  
 3 Bb2 Ngf6 4 e3 e6 5 g3 (5 d3) Bd  
 6 Bh3 Qe7 7 0-0 e5 8 d3 e4 9 Nh4  
 Ne5 10 B:c8 R:c8 11 Nf5 Qd7 12 N:d6+  
 c:d6 13 Nd2 Qh3 14 B:e5 Ng4 15 Q:g4  
 Q:g4 16 B:d6 Kd7 17 Ba3 R:c2 18 f3  
 Qg5 19 f4 Qh6 20 Rfd1 Qa6 21 d:e  
 Q:a3 22 e:d R:c2 23 Rab1 Rc8  
 24 Nc4 R:c4! 25 b:c4 Q:e3+ 26 Kh1  
 Qf3+ (0-1).

CENTER COUNTER White: Perkins (1718) Black: Le Blanc (1616)  
 JACKSON VS BATON ROUGE MATCH  
 1 e4 d5 2 e:d Q:d5 3 Nc3 Qa5 4 d4  
 e5?! 5 d5?! (5 Nf3!) 5...Nf6 6 Bb5+  
 Nbd7 7 Be3 Bb4 8 Nge2 a6 9 B:d7+  
 B:d7 10 0-0 c5 11 a3 B:c3 12 N:c3  
 0-0 13 Bg5 Qb6 14 d6 Kh8 15 B:f6  
 g:f6 16 Ne4 f5 17 Nf6 Qd8 18 N:d7  
 Q:d7 19 Qd5 f6 20 Q:c5 Rac8 21 Qb4  
 R:c2 22 Rac1 Rcc8 23 Rc7 R:c7  
 24 d:c7 Rc8 25 Rcl b5 26 Qc5 Kg7  
 27 Qb6 f4 28 b4 Kg6 29 h4 e4  
 30 h5+ Kg5 31 h6 Qd2 32 Rc5+ f5  
 33 Kh2 Qd1 34 Rc3 Qe1 35 Qd4 K:h6  
 36 Qf6+ (1-0).

Advertisement



master analysis

Very instructive analysis of games played by  
 lower rated players in tournaments, friendly  
 encounters or by mail, only \$10 a game. Postal  
 lessons \$5 each. Positions (questions) \$3 each. For  
 details, just send a stamp.

Rudy Blumenfeld  
 Box 271 Midwood Station  
 Brooklyn, N.Y. 11230





# 1979 Mississippi State Championship and state class championships

WIN THE STATE CHAMPIONSHIP!

BE THE STATE CHAMPION IN YOUR RATING CLASS!

COMPETE WITH MISSISSIPPI'S TOP PLAYERS

The following official titles will be awarded: Mississippi State Champion; State Champion--Class A; State Champion--Class B; State Champion--Class C; State Champion--Class D; State Champion--Class E; State Unrated Champion; State Champion--13 and under



**Business meeting  
at 1:30 p.m.  
Sept. 2**

August 31 to September 2, 1979--open to Mississippi residents only

Five round Swiss system, time limit 50 moves in two hours

SITE: Ramada Inn, Mississippi Highway 12, Starkville, Mississippi 39759

ENTRY FEE: \$15. \$10 for persons under 13 years old

REGISTRATION: 9-10 a.m. Sept. 1; optional registration 7-8 p.m. Aug. 31

ROUND TIMES: Optional Friday night round 8 p.m. Aug. 31; Regular rounds

10 a.m., 3 p.m., 8 p.m. Sept. 1; 8:30 a.m., 3 p.m. Sept. 2

FOR MORE INFORMATION: Contact U.J. Gilbert, Box 1202, Clarksdale,

MS 38614 or Peyton Crowder, Box 3214, Mississippi State, MS 39762

# MCA BUILDERS

The Clarksdale Chess Club has maintained its lead as the top builder in the state, with 18 credits. Paul Waldowski and Vincent D.W. Kerlin are tied for second with 8 each. The Starkville Chess Club/Dixie Chess Assn. has 6, Jackson Chess Club 4, U.J. Gilbert 2, Robert Shirley 2, James R. Cain 2, Gulf Coast Chess Club 1, and L. Allen Kerr 1.

Remember, the deadline for builder credits is the state championship over Labor Day weekend. You still have a chance to win cash prizes, so sign up a few new members into the MCA.

--U.J. Gilbert

Use this handy coupon to sign up someone.

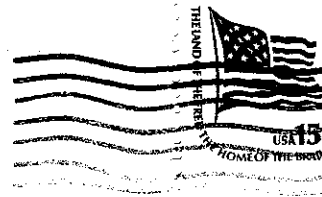
NAME: _____	BIRTH DATE: _____
ADDRESS: _____	
USCF ID # (if any): _____	
DATE OF MEMBERSHIP SALE: _____	
BUILDER CREDIT TO: _____	

Return to:

Box 12222  
Jackson, MS 39211

MISSISSIPPI CHESS ASSOCIATION  
membership dues are \$5 per  
year

FIRST CLASS MAIL



SPENCER STEPHEN D

8001

070

8479 CEDARBRUSH  
SOUTHAVEN

MS 38671