

# MISSISSIPPI CHESSLETTER

vol. 6 no. 6 Aug-Sep 1979

President:  
U.J. Gilbert  
P.O. Box 1202  
Clarksdale, MS 38614

Secretary-treasurer:  
Warren B. Porter  
Box 12222  
Jackson, MS 39211

Editor:  
Ed Issa  
P.O. Box 1434  
Greenville, MS  
38701

Vice President:  
Paul J. Waldowski  
433 Pinelawn Dr.  
Biloxi, MS 39531

Parliamentarian:  
Judson Farmer  
1229 Lynwood Dr.  
Jackson, MS 39216

## TOURNAMENTS

AUG. 19 STATE CHAMPIONSHIP WARM-UP JACKSON

4-SS, 45/90. University Medical Center Alumni House, Jackson, MS.  
Prize: 1st, free entry to state championship; others per entries.  
EF: \$3. USCF and MCA mem. req. Reg. 8:30 a.m. (12:30 p.m. for a  
½-point bye). Rds. 9-1-4-7.

AUG. 31-SEP. 2 MS STATE CHAMPIONSHIP STARKVILLE

5-SS, 50/2. Ramada Inn, Miss. Highway 12, Starkville, MS 39759.  
This is the state class championships (A-E, UNR., 13-and-under)  
as well as the state individual championship. Open to Mississippi  
residents only. EF: \$15 (\$10 under 13). MCA mem. req. \$\$ Cash per  
entries. Trophies to all class champions. Reg. 9-10 a.m. Sep. 1;  
optional reg. 7-8 p.m. Aug. 31. Rds. Optional rnd. 8 p.m. Aug. 31;  
10-3-8, 8:30-3. MCA business meeting 1:30 p.m. Sept. 2. INFO:  
Peyton Crowder, Box 3124, Mississippi State, MS 39762.

A tentative agenda for the business meeting has been prepared  
by MCA Secretary-Treasurer Warren Porter. (1) Reading of minutes,  
(2) Reports of MCA officers, (3) Reports of club representatives,  
(4) Discussion of by-laws changes (if any), (5) Discussion of limit-  
ation of debt an officer can incur without executive committee OK,  
(6) Discussion of fund-raisers, dues, and MCA expenses, (7) Discuss-  
ion of qualifying point systems, (8) Election of new officers.

Other items may be added later by the MCA president or by  
executive committee members.

MISSISSIPPI CHESSLETTER is the official publication of the  
Mississippi Chess Association, a non-profit organization  
promoting chess in Mississippi. Membership is \$5 per year  
and is payable to the secretary-treasurer.

# CHESS LIFE

## CROWDER MID-SUMMER LEADER

Peyton Crowder of Starkville was the leading scorer in the Mid-Summer Zephyr, held July 22 in Starkville. He scored 3½, with wins over all other players except Larry M. Wright. Wright was second with three points; he also directed the tournament.

### Mid-Summer Zephyr

	RATING	CROWDER	WRIGHT	FARRELL	SCOTT	DAVIS	SCORE	S.B.
1 PEYTON CROWDER	1755	X	½	1	1	1	3½ - ½	
2 LARRY WRIGHT	1525	½	X	1	½	①	3 - 1	
3 M. A. FARRELL	1487	0	0	X	½	1	1½ - 2½	
4 GORDON E. SCOTT	1472	0	½	½	X	0	1 - 3	2
5 DENNIS DAVIS	1134	0	⊙	0	1	X	1 - 3	1

### INDEX OF OPENINGS (Vol. 6)

KING'S GAMBIT--accepted, 7; declined, 5

CENTER GAMBIT--7

PHILIDOR DEFENSE--26

FOUR KNIGHTS GAME--27

GRECO COUNTER GAMBIT--35, 36

LATVIAN GAMBIT--See Greco Counter Gambit

LETTISH GAMBIT--See Greco Counter Gambit

CENTER COUNTER--5, 36

OWEN'S DEFENSE--6

MODERN DEFENSE--7

QUEEN'S FIANCHETTO DEFENSE--See Owen's Defense

ROBATSCH DEFENSE--See Modern Defense

SICILIAN DEFENSE--Smith Morra Gambit,

41; Alapin, 6; KIA against, 32; Dragon, 27; Maroczy Bind, 41; Scheveningen, 25 Najdorf, 42

QUEEN'S PAWN GAME--41

QUEEN'S GAMBIT ACCEPTED--25

QUEEN'S GAMBIT DECLINED--Marshall Defense, 35; Tarrasch Defense, 6; Orthodox Defense, 33

NIMZO-INDIAN DEFENSE--34, 42

KING'S INDIAN DEFENSE--24

BENKO GAMBIT--accepted, 27; declined, 27

DUTCH DEFENSE--27

CATALAN SYSTEM--6

ENGLISH--w/g3, 6, 7, 13, 24, 35, 36 w/o g3, 7

LARSEN'S OPENING--36, 42

MACLEOD ATTACK--25

WIGGIN'S OPENING--See MACLEOD ATTACK

# PORTER PONDERERS

By Warren B. Porter Jr.

At a recent meeting of the Jackson Chess Club, John E. Masters, a newcomer from Greenville, reminded me of a game I played in the 1976 state championship against Byron Watson. His Morra Gambit transposed into a Maroczy Bind that neither of us seemed to know how to handle. The game eventually reached a pawn endgame that was barely won for black. The reader may want to study the second diagram with a caption, "White to play, black wins" before playing over the game.

Diagram #1

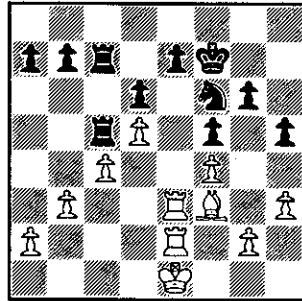
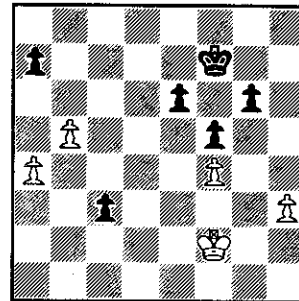


Diagram #2



W to play; B wins

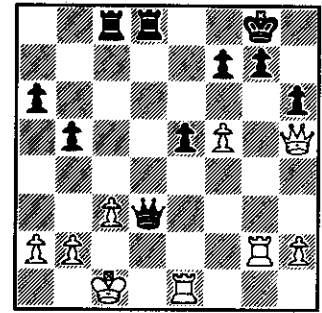
SICILIAN DEFENSE White: Watson Black: Porter

1 e4 c5 2 d4 cd 3 c3 d3 4 c4 Nf6 5 Nc3 d6 6 h3 g6 7 Bxd3 Nc6 8 Nf3 Bg7 9 Be3 00 10 00 Nd7 11 Qd2 Nde5 12 Be2 (Trading at e5 allowing f4 may be better.) 12 .. Nxf3+ 13 Bxf3 Ne5 14 Be2 Be6 15 b3 Re8 16 Rac1 Nd7 (Now 17 f4 can be met with .. f5.) 17 Bd4 Bxd4 18 Qxd4 Qb6 19 Rfd1 Qxd4 20 Rxd4 Rac8 21 Nd5 (The Marco Hop) Kg7 22 Rcd1 Nf6 23 f3 Nh5 24 Kf2 Bxd5 25 ed f5 26 f4 Nf6 27 Bf3 Rc5 28 Re1 h5 (This prevents g4 but allows White to monopolize the e-file.) 29 Rd2 Kf7 30 Re3? (Rde2 keeps Black from freeing the Re8.) 30 .. Rec8 31 Rde2 R8c7 32 Ke1 [Diag #1] b5 33 cb Nxd5 34 Bxd5 Rxd5 35 a4 Rd4 36 g3 d5?! 37 Rd2 (Re5!) Re4 38 Kf2 e6 39 Rdd3 h4 (Loosens White's Pawns.) 40 Rc3 hg+ 41 Kxg3 (Kg2 would win the Pa7, but White's Q-side Pawns would be too slow compared to Black's center Pawns.) 41 .. Rxe3+ (Black keeps the c-file.) 42 Rxe3 d4 43 Re1 Rc3+ 44 Kf2 Rxb3 45 Rc1! Rc3 (Time control was reached with the 45th move and Black didn't have much time to make a crucial decision. It would have been impossible to stop the Q-side pawns after Rc7 & Rxa7 and I didn't know if my center pawns would be fast enough. The pawn ending looked OK for Black so I challenged the file.) 46 Rxc3 dc [Diag #2] (White sealed his 46th move and had plenty of time to study this position.) 47 Ke3? e5!! 48 fe? f4+ 0:1 Isolated Pawns seperated by two files can be stopped by a lone King if they aren't far enough advanced. At move 48 a better defence would be 48 Kd3 ef 49 Kxc3 (Now or never. Now the Black King has to stop White's Q-side majority.) 49 .. Ke6 50 h4 (Prevents Black from supporting the Pf4 with g5.) 50 .. Kd5! (Kd6? 51 Kd4 draws.) 51 a5 Kc5 52 b6 ab 53 ab Kxb6 54 Kd3 Kc5 55 Ke2 Kd4 56 Kf3 Ke5 & wins. If White had omitted h4 the position would be WKf3 WPh3 BK c5, BP f4,f5,g6. Black could play 55 .. g5 and if 56 h4, gh 57 Kxf4 Kd4. Back to the diagram, Anthony Crawley came up with a better try 47 Ke2, not allowing exf4 with check. 47 .. e5 48 a5 ef 49 b6 ab 50 ab c2 (Black wants to promote the f-pawn.) 51 Kd2 (if 51 b7, c1Q 52 b8Q Qe3+ 53 Kd1 Qxh3 54 Qxf4 Qg4+ wins.) 51 .. f3 b7 52 b7 f2 53 b8Q c1Q+ 54 Kxc1 f1Q+ & .. Qxh3. Black has a win, but it is going to be a grind.

# GAMES

SICILIAN NAJDORF White: Wright (1525) Black:

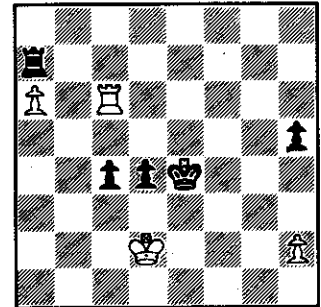
Farrell (1487) MID-SUMMER ZEPHYR 1 e4 c5 2 Nf3 d6  
 3 d4 c:d 4 N:d4 Nf6 5 Nc3 a6 (The Najdorf Variation.  
 Systems like the Pelikan have been more popular  
 lately.) 6 Bg5 e6 7 f4 Be7 8 Qf3 h6 9 Qh3!?! (9 Bh4  
 Nbd7 10 0-0-0 Qc7 11 Bd3?! g5! 12 f:g Ne5 is Browne's  
 Defense.) 9...Nh7 (9...e5 10 Nf5) 10 B:e7 Q:e7  
 11 0-0-0 0-0 (Black wants to keep e6 under obser-  
 vation by the Bc8.) 12 f5 Nf6 13 Bd3 Nc6 14 Nf3 e:f  
 15 e:f Ne5 16 N:e5 d:e5 17 Rhe1 (Although black has  
 liquidated his pawn weakness, white remains ahead in  
 development.) 17...b5 18 Ne2 Qc5 19 Ng3 Bb7 20 Qh4  
 Rac8 21 Rd2 Rfd8 22 c3 B:g2?! 23 Nh5!?! N:h5 24 Q:h5 Qd6 (Does black  
 have anything better here? Besides the threat to take the Bg2 as in  
 the game, white intends 25 f6 g:f 26 Q:h6 and 27 Bh7+) 25 R:g2 Q:d3  
 (diagram) 26 R:g7+! K:g7 (Forced.) 27 f6+ K:f6 (A. 27...Kh7??  
 28 Q:f7+ Kh8 29 Qg7# B. 27...Kf8!?! 28 Q:h6+ Ke8 29 R:e5+ Kd7 30 Qh5  
 R:c3+ 31 b:c3 Q:c3+ 32 Kb1 Qd3+ 33 Kb2 Qd2+ 34 Kb1 Qd3 ½-½) 28 Q:e5+  
 Kg6 29 Rg1+ Kh7 30 Qg7#



26 ?

NIMZO-INDIAN White: Crowder (1755) Black: Wright

(1525) MID-SUMMER ZEPHYR 1 d4 Nf6 2 c4 e6 3 Nc3 Bb4  
 4 e3 d5 5 Nf3 Nbd7!?! 6 Qc2 c5 7 d:c N:c5 8 Bd2 0-0  
 9 a3 B:c3 10 B:c3 Bd7 11 b4 Ba4 12 Qb2 Nb3 13 Rb1  
 Rc8 14 c5 b6 15 Ba6 Rc7 16 Be5 b:c 17 B:c7 Q:c7 18 0-0  
 Ne4 19 Bd3 f5 20 B:e4 f:e4 21 Qc3 e:f3 22 R:b3 f:g  
 23 Rc1 B:b3 24 Q:b3 Qf7 25 Rc2 c4 26 Qc3 h5 27 f4 Qf6  
 28 Q:f6 R:f6 29 R:g2 g6 30 b5 Kg7 31 a4 Rf7 32 Kf1 Rc7  
 33 Ke1 Kf6 34 Rb2 e5 35 b6 a:b 36 R:b6+ Kf5 37 a5 Ra7  
 38 a6 e:f 39 e:f d4 40 Kd2 K:f4 41 R:g6 Ke4 42 Re6+  
 Kd5 43 Rh6 Ke4 44 Re6+ Kf5 45 Rc6 Ke4 (diagram) ½-½



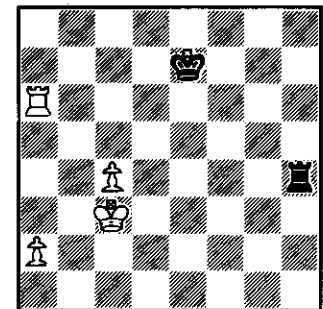
Final position

QUEEN'S PAWN GAME White: Barrett (1397) Black: Wright (1525) ZEPHYR III

1 Nf3 d5 2 d4 Nc6?! 3 g3 (3 c4! Bg4!?! transposes to Chigorin's Defense;  
 see MCO-11, p. 237) 3...Nf6 4 Bg5 Bf5 5 Bg2 h6 6 B:f6 e:f6 7 c3 Be7  
 8 0-0 Qd7 9 Nh4 Bh3 10 Re1 B:g2 11 N:g2 0-0-0 12 Nd2 g5 13 e4 h5!?!  
 14 e:d Q:d5 15 Ne3 Qd7 16 Qf3 h4 17 Qf5 h:g 18 Q:d7 R:d7 19 h:g Bd8  
 20 Nf5 Rd5 21 g4 Kd7 22 Re4 Ne7 23 Ne3 Rb5 24 b4 Ng6 25 a4 Rb6 26 Ndc4  
 Re6 27 R:e6 f:e6 28 Rd1 Nf4 29 d5 Ne2+ 30 Kg2 Nf4+ 31 Kf3 Rh3+ 32 Ke4  
 e5 33 Na5 Ne2 34 Kd3 Nf4+ (½-½)

LARSEN'S OPENING White: Scott (1472) Black: Wright (1525) ZEPHYR III

1 b3 Nf6 2 Bb2 e6 3 c4 Bc5 4 d4 Bb4+ 5 Bc3 B:c3+ 6 N:c3 Nc6 7 e4 d6  
 8 Nf3 e5 9 d:e d:e 10 Q:d8+ K:d8 11 Rd1+ Bd7 12 g3 Ke8 13 Nd5 Rc8  
 14 N:f6+ g:f6 15 R d2 Ke7 16 h4 Bg4 17 Nh2 Be6  
 18 Nf3 Rcd8 19 Bh3 Nd4 20 N:d4 e:d4 21 f4 c5 22 Ke2  
 Bd7 23 Kd3 a6 24 Re2 Bc6 25 Rg1 Bd7 26 f5 b5  
 27 e5 b:c+ 28 b:c Rhe8 29 Rb1 Rb8 30 Rbel f:e  
 31 f6+ Kd6 32 B:d7 e4+ 33 R:e4 R:e4 34 R:e4 K:d7  
 35 Re7+ Kd6 36 R:f7 Ke6 37 R:h7 K:f6 38 Rc7 Rg8  
 39 R:c5 R:g3+ 40 K:d4 Rg4+ 41 Kc3 R:h4 42 Rc6+  
 Ke7 43 R:a6 (diagram) Kd7 44 Kb4 Rh1 45 a4 Rb1+  
 46 Kc5 Rb7 47 a5 Rc7+ 48 Kb5 Kc8 49 Rb6 Ra7 50 c5  
 Rh7 51 a6 Rc7 52 Re6 Kd7 53 Rh6 Rc8 54 a7 Ra8  
 55 Kb6 Rc8 56 Rh7+ Ke6 57 c6 Kd5 58 Rh6 Ke5  
 59 Kb7 (1-0)



43...?

INDEX OF PLAYERS (Vol. 6)

APPLEBERRY--Porter 13  
 BARRETT--Wright, 42  
 BLITZ--Waldowski, 7  
 BOEREN--Dorocke, 6  
 BRANDON--Masters, 35  
 BROWN--Sentef, 36  
 BRITT--Farrell, 25; Scott, 25  
 CHRISTIANSEN--Gower, 34; Porter, 33  
 CLINTON--Seid, 32  
 CROWDER--Nekvasil, 24; Wright, 27, 42  
 DEAN--Farrell, 27  
 DOROCKE--Boeren, 6  
 EVANS--Seid, 35  
 FARRELL--Britt, 25; Dean, 27; Wright, 42  
 GOWER--Christiansen, 34  
 HERBERT--Porter, 36  
 ISSA--Perkins, 7  
 JONES--Waldowski, 7; Wright, 5, 24  
 KHATENA--Kuroda, 7; Wright, 6  
 KILLCREASE--Ladner, 25; Waldowski, 7  
 KURODA--Khatena, 7  
 LADNER--Killcrease, 25; Porter, 6; Sentef, 27  
 LEBLANC--Perkins, 36  
 MASTERS--Brandon, 35  
 MATHES--Wright, 27  
 NEKVASIL--Crowder, 24  
 PERKINS--Issa, 7; LeBlanc, 36; M. Shearer, 36; Waldowski, 5  
 PORTER--Appleberry, 13; Christiansen, 33; Herbert, 36; Ladner, 6; Waldowski, 6; Watson, 41; Woodard, 25  
 SCOTT--Britt, 25; Wright, 42  
 SEID--Clinton, 32; Evans, 35; Wilcox, 35  
 SENTEF--Brown, 36; Ladner, 27; Waldowski, 6;  
 SHEARER, M.--Perkins, 36; Webb, 35  
 SHEARER, S.--Wilcox, 35  
 SIT--Tolson, 26  
 TOLSON--Sit, 26  
 WALDOWSKI--Blitz, 7; Jones, 7; Killcrease, 7; Perkins, 5; Porter, 6; Sentef, 6  
 WATSON--Porter, 41  
 WEBB--Shearer, M., 35  
 WILCOX--Shearer, S., 35; Seid, 35  
 WOODARD--Porter, 25  
 WRIGHT--Barrett, 42; Crowder, 27, 42; Farrell, 42; Jones, 5, 24; Khatena, 6; Mathes, 27; Scott, 42

Advertisement



## master analysis

Very instructive analysis of games played by lower rated players in tournaments, friendly encounters or by mail, only \$10 a game. Postal lessons \$5 each. Positions (questions) \$3 each. For details, just send a stamp.

**Rudy Blumenfeld**  
**Box 271 Midwood Station**  
**Brooklyn, N. Y. 11230**