

# MISSISSIPPI CHESS ASSOCIATION

A USCF affiliated organization dedicated to the support of Chess in Mississippi

MISSISSIPPI CHESS LETTER

VOL I

Number 3

Feb 74

President: Peyton Crowder, Drawer EB, Miss State 39762  
Vice President: Bill McDonald, 3587 Lanell Lane, Jackson 39208  
Secretary: John Masters, 1583 Genie Fairway, Greenville  
Treasurer: Jaye Gilbert, 719 Launcelot Rd, Jackson 39206  
Parliamentarian: Judson Farmer, 1229 Lynnwood Dr., Jackson 39206  
Editor: Warren Porter, Box 12222, Jackson 39211

When we started putting this issue together in late January, no tournament ads had been submitted by any state organizer. A decision was not to publish until we had something more definite than just a date and a place for an event three months in the future. The suggestion to wait until the Feb rating supplement comes out would make sense except that the Miss. College Team event must be announced now and, if this policy were carried through to the April issue, might place organizers of late April or early May events in a bind if the Rating Supplement (and the MC) was late.

To compound the problem this issue would be 16 pages long if it contained all material submitted for it. Therefore this issue contains only ratings, Qualifying Point standings, news, games relating to news, and articles which invite discussion. The next issue will be printed in late March to include that month's Rating Supplement and to clear up the backlog. A decision on the MC going monthly will be made in the near future.

## IMPORTANT NOTICE TO ALL COLLEGE, JUNIOR COLLEGE, AND UNIVERSITY CHESS CLUBS IN MISSISSIPPI:

On Feb 23 the MCA is sponsoring the first annual Miss. College Team Championship. All college and universities are invited to send any number of four-man teams to this event. Details on the tournament are as follows: PLACE: Alumni House on the campus of Miss. State University, Starkville, Miss. ELIGIBILITY: All college undergraduates and graduate students are eligible. Students must be taking courses in residence at the college which they represent. Colleges may enter any number of four-man teams. Partial teams (under four members) not accepted. ENTRY FEE: \$10 per team + valid USCF and MCA membership for all members. MCA \$3 senior, \$2 jun. USCF at reduced rates \$8 sen. \$4 jun. FORM OF TOURNAMENT: One day, four round Swiss System. Registration: 8-8:45 am. Rounds at 9, 1, 5, and 9. Time limit: 50/90. Pairings based on team scores. Cumulative team scores used as principal tie-break. PRIZES: Trophies to 1st and 2nd place teams. HOUSING: Dorm housing available at \$1.50 per night, bring your own linen, etc. Housing available at MSU Alumni House at reasonable rates. THIS ANNOUNCEMENT SUPERCEDES THE ANNOUNCEMENT MADE IN CHESS LIFE. We regret that this event conflicts with the Assn. of College Unions event in Tallahassee.

For further details contact Peyton Crowder.

Other MCA events are listed within Dr. Crowder's letter on the next page. Details on these events will be published in the next issue. Details on other upcoming events on page 7.

Affiliated with the UNITED STATES CHESS FEDERATION

Dear MCA Members:

Recent commentary of the manner in which the affairs of the MCA are being conducted seems to call for a response. I have asked editor Porter to allow me to use the pages of the Mississippi Chessletter to make such a response.

The duties of the President according to the By-Laws developed by the committee in Kosciusko in 1973 do not empower the holder of this office to demand that any affiliated club hold an MCA qualifying tournament. Most certainly the President should encourage such tournaments in every way possible and most certainly this has been and is being done.

Let's take a look at the chess activities sponsored by the Mississippi Chess Association since its formation in the late summer, 1973.

1. Dixie Dandy held in August, 1973, Starkville.
2. Dixie Open held in January, 1974, Starkville.
3. Mississippi Intercollegiate Team Tournament scheduled for February 23, 1974, Starkville.
4. Vicksburg Open scheduled for March 23 and 24, 1974.
5. Laurel Open, April, 1974.
6. Natchez Trace Open scheduled for April 27 and 28, 1974.
7. Ole Miss Open scheduled for May 4 and 5, 1974.
8. Natchez Open scheduled for August 3 and 4, 1974.
- 9.† Mississippi Open scheduled for late August, 1974, tentatively scheduled for Jackson, Mississippi.

As I see it, we need two basic things for the MCA to function successfully with regard to selection of the State Champion each year. These are:

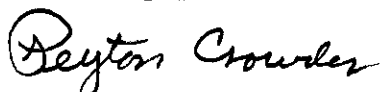
1. A reasonably large number of tournaments scattered throughout the state.
2. Attendance at tournaments by as many players as possible.

It is my opinion that one can best determine those MCA members who are most dedicated by examining the lists of participants in the two tournaments that have been held as of this date. As for the matter of encouraging clubs to hold qualifying tournaments, a possibility might be to increase the assessment for affiliation from \$5 to \$15 with a \$10 rebate going to the club following the completion of a qualifying tournament. Other more satisfactory methods may be suggested by the membership at our business meeting in August.

Other suggestions which I will bring to the floor at the August business meeting will be in regard to a new system of choosing the State Champion based on a larger Swiss-system tournament of qualifiers. Having played in the four-man play-off for the State Championship, I am more convinced than ever that such a system is not the most satisfactory for the MCA.

I hope to see each and every member of the MCA in attendance at the annual business meeting in August at which time I believe we can satisfactorily develop ways to solve many of the problems which we have faced in the MCA's first year of reorganization.

Sincerely yours,



Peyton Crowder  
MCA President

† This event may be changed to June 29-30.

2ND DIXIE OPEN  
 STARKVILLE, MS.  
 JAN. 5 & 6, 1974

	Rtg.	1	2	3	4	5		mod	sol	s.b.
1. Stan Perkins	1651	W23	W9	W4	W2	D3	4½-½			
2. Troy Miller	1749	W14	W11	W6	L1	W8	4 -1	10½		
3. Peyton Crowder	1891	W35	W13	D8	W7	D1	4 -1	10		
4. David Abel	1726 unr.	W16	W28	L1	W11	W9	4 -1	9		
5. Robert Williams	1484	W26	W10	L7	W27	W13	4 -1	8	13	9½
6. Mike Sulcer (Ark.)	1492	W32	W20	L2	W24	W12	4 -1	8	13	9
7. Harold Melvin	1716	W21	W25	W5	L3	D17	3½-1½	9½		
8. Anthony Crawley	1639	W29	W31	D3	W19	L2	3½-1½	8		
9. Williams-Barrentine	1473	W30	L1	W31	W20	L4	3 -2	9½		
10. Clyde McMillan (Ala.)	1744	W24	L5	L12	W32	W19	3 -2	8		
11. Ed Issa	1477	W37	L2	W25	L4	W27	3 -2	7½	12½	
12. Gunnar Woodard	1464	LF	W26	W10	W16	L6	3 -2	7½	11½	7½
13. Larry Wright	1539	W36	L3	W33	W21	L5	3 -2	7½	11½	3½
14. Richard Carter	1317	L2	L15	W37	W23	W28	3 -2	7	12	
15. Rolland May	1664	L19	W14	L21	W33	W24	3 -2	7	11	6
16. M. A. Farrell	1542	L4	W34	W23	L12	W25	3 -2	7	11	4½
17. Robert Pogue	1684	D31	W29	L19	W22	D7	3 -2	6½		
18. Gordon Scott	1465	L20	W32	L27	W26	W31	3 -2	6½		
19. Pete Shirley (Ark.)	1446	W15	D22	W17	L8	L10	2½-3½	9		
20. Chris Young	1486 unr.	W18	L6	W22	L9	D21	2½-2½	8½	15	
21. T. D. Roberson	1413	L7	W37	W15	L13	D20	2½-3½	8½	13	
22. Joe Farris	1604	W34	D19	L20	L17	W33	2½-2½	6		
23. Clayton Rowland	1366	L1	W30	L16	W14	W32	2 -3	8	13½	
24. Baird Montgomery	1396	L10	W36	W28	L6	L15	2 -3	8	12	
25. John Weeks	1230	Bye	L7	L11	W35	L16	2- 3	7		
26. Mike Stephenson	1249	L5	L12	Bye	L18	W36	2 -3	6½		
27. Laird Woodard	1200	LF	Bye	W18	L5	L11	2 -3	6	10	3
28. Robert Stokes (Ark.)	1598	W33	L4	L24	W34	L14	2 -3	6	10	2
29. Judson Farmer	1360	L8	L17	L32	Bye	W34	2 -3	5		
30. Michael Wilmore	1406 unr.	L9	L23	L34	W36	W35	2 -3	4		
31. Billy Shea	1378	D17	L3	L9	W37	L18	1½-3½			
32. Charles Mandly	1262	L5	L18	W29	L10	L23	1 -4	8		
33. Chuck Wilmore	1294	L23	W35	L13	L15	L22	1 -4	7½		
34. U. J. Gilbert	1302	L22	L16	W30	L28	L29	1 -4	6½		
35. Sam P. Brown	1466	L3	L33	W36	L25	L30	1 -4	4½		
36. Walter G. Gilbert	1086 unr.	L13	L24	L35	L30	L25	0 -5	9½		
37. David Ratliff	1086 unr.	L12	L21	L14	L31F	LF	0 -5	8½		

Recently Jerry Krouse wrote to ask me why didn't any games from the Dixie Dandy get published. For one thing, carbon scoresheets are more expensive than regular ones and it is just one more thing that the TD has to fool with. Even at the Miss Open, where scoresheets were kept, several players kept the score in their own notebook, and their opponent's scoresheet fell apart at the same time their game did. Still, if organizers will send me the best games from their events or as many scoresheets as they can collect, I will be happy to publish as many games from it as I can.-Ed.

Peyton Crowder won the Thursday Tornado, held Nov-Dec at MSU with a 5-0 score followed by Paul Newsom and Jerry Joyner with 4-1 each. Crosstable next month.

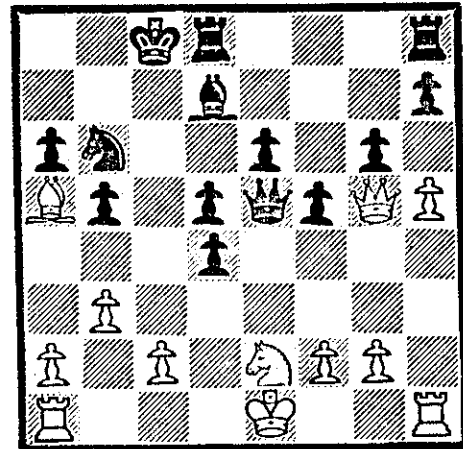
Peyton Crowder vs Richard Burkhardt

(All notes by Dr. Crowder unless otherwise indicated.)

Many books have been written on such subjects as, "Think Like a Grandmaster," "Chess Mastery By Question And Answer," and "Chess Mastery Made Easy." I submit this game as something different. It could well be entitled "How to Play Class E Chess In One Lengthy Lesson." The game is Crowder-Burkhardt from the recent state championship finals and it has several interesting features, including a gross middle game miscalculation by White on move 19, a blunder by Black on move 22, and one of the most unbelievably poor endgames ever played by a (supposedly) Class A player.

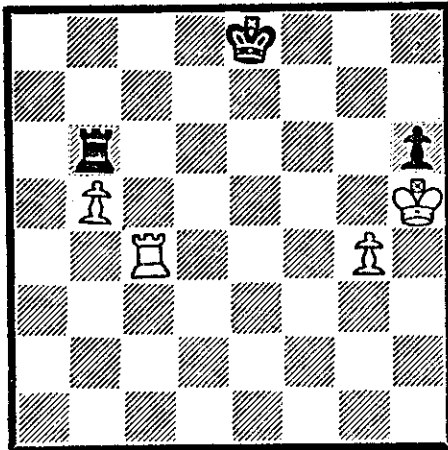
1 P-K4 P-K3 2 P-Q4 P-Q4 3 N-QB3 N-KB3 4 B-KN5 B-K2 5 P-K5 KN-Q2 6 B-Q2 An ill-advised attempt to avoid book lines. 6 BxB is best. Did White think he was playing against the MacCutcheon? 6 ... P-QB4 7 Q-N4 P-KN3 8 B-QN5 P-QR3 9 BxN+ NxB 10 N-B3 P-B4 11 Q-B4 P-QN4 12 N-K2 N-N3 13 P-QN3 B-Q2 14 P-KR4 Q-B2 15 P-R5 000 16 N-N5 A move which sets an interesting trap. 16 ... BxN 17 QxB PxP All according to White's plan. 18 B-R5! QxKP? DIAG #1 Black takes the bait. 19 QR-B1?? But White fails to follow up with the winning sequence! Correct was 19 BxN! and if 19 ... P-Q6 20 Q-K3! and after 20 ... QxR+ 21 K-Q2 Q-N2 (other moves lead to a quick mate) 22 Q-B5+ B-B3 23 QxB+ K-N1 24 BxR

RxB 25 Q-N6+ etc. If after 19 BxN P-Q6 20 Q-K3, Black plays 20 ... QxQ then 21 PxQ PxN 22 BxR and White should win with relative ease. 19 ... Q-Q3 (19..K-N2 WP) 20 NxP P-K4 21 N-B3 P-K5? Premature. This allows the Knight to go back to its strong post at Q4. (True. 21 ... K-N2 allows the Queen to maintain the Pawn at K4. WP)

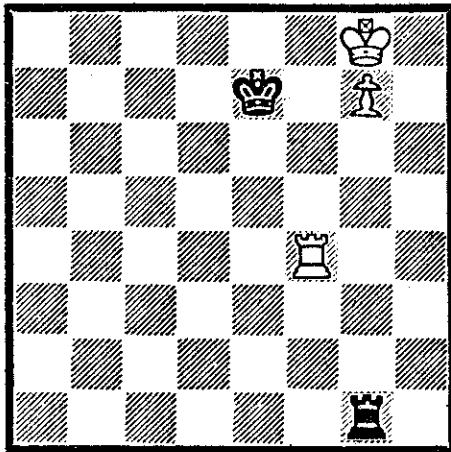


DIAG #1 After 18 ..QxKP

22 N-Q4 P-R3?? An inexplicable mistake. (22 .. QR-N1 first. WP) 23 QxNP QxQ 24 PxQ K-N2 25 R-R5 QR-KN1 26 NxBP BxN (26 .. RxP) 27 RxB 28 R-B7+ K-N1 30 R-Q7 R-N1 31 P-N3 R-N4 32 R-Q1 P-K6 33 R/1xP PxP+ 34 KxP R-B3+ 35 K-N2 RxR (Black should try to keep the c Pawn backward with P-N5 when he gets the chance. For example 35 .. R-B3 and if 36 R-Q8+ K-N2 37 R/5-Q7+ K-N3 38 R-Q6 R-QB4 and Black might be able to keep the backward Pawn backward. WP) 36 RxR K-B2 37 R-Q2 R-K3 (37 .. P-N5 WP) 38 K-R3 R-KB3 39 K-R4 K-B1 40 K-R5 K-B2 41 R-K2 K-Q2 42 P-R3 K-Q1 43 R-N2 K-Q2 44 R-K2 K-Q1 45 R-K3 Out of time pressure at last. 45 ... K-Q2 46 P-B3 K-Q1 47 K-N4 K-Q2 48 R-K4 R-N3+ 49 K-R4 R-QB3 50 P-B4 PxP 51 RxP R-QN3 52 P-QN4 K-K1 53 P-N4 R-KN3 54 K-R5 R-KB3 55 R-B5 R-K3 56 R-B4 R-Q3 57 P-R4 R-KB3 58 P-QN5 PxP 59 PxP R-QN3 DIAG #2 60 R-B5(!) K-Q1(?) (Black could have put up more resistance by keeping his K on e7 and e8. He could then get his King in front of the g Pawn if White tried the line as in the game.)



DIAG #2 After 59..R-QN3



DIAG #3 After 76 ..K-K2

79 R-B4+ K-K4! draws. 77 R-B7+? K-K1 78 R-B6 R-KR8 79 R-B2 K-K2 80 R-K2+ K-Q3 81 R-K8 (81 R-K4 WP) R-KN8 82 R-KB8 K-K2 83 R-B3 R-N7 84 R-KR3 85 R-R6? 85 K-B8 RxB 86 R-B3+ K-N3 87 R-N3+ wins easily. 85 ... K-K2 86 K-R7??? Conceding the draw. White should move 86 R-R3 and start over again. (Quicker is 86 K-R8 K-B2 87 R-R7 with a double check on hand if Black tempos on the g file. WP) 86 ... K-B2 1/2:1/2

White would then have to try a K tour to the Queenside, but after the WK reached the e file, Black could play Bg6 with threats on the Kingside. White might still have a win, but he would have to work for it. WP) 61 K-R4(?) (61 R-B6 RxB+ 62 KxP K-K2 63 K-N6) 61 ... K-Q2(?) 62 R-B6 RxB 63 RxB K-K2 64 R-R5 R-N8 65 R-KB5 R-R8+ 66 K-N5 R-R7 67 K-N6 R-R8 68 K-N7 K-K3 69 R-B6+ K-K2 70 P-N5 R-KN8 71 P-N6 R-N7 72 R-B7+ K-K1 73 K-R7 R-R7+ 74 K-N8 R-KN7 75 P-N7 R-N8 76 R-B4 K-K2 DIAG #3 The Lucena Position--which is not as easy to win as is generally believed.

White cannot proceed with 77 K-R7 R-R8+ 78 K-N6 R-N8+ 79 K-R6 R-R8+ 80 K-N5 R-N8+, and now if 81 R-N4 RxR+! 82 KxR K-B2 and draws. Correct is 77 R-B2 K-K1 78 R-K2+ K-Q2 79 R-KR2 K-K2 80 K-R8 K-B2 81 R-B2+ and White wins. (We can't let Pete evade the Lucena that easily. If 77 R-B2 R-N6 78 R-K2+ K-B6 79 K-B8 RxB 80 R-B2+ K-N3 81 R-N2+ and 82 RxR. The main Lucena can be reached after 77 R-B2 R-N6 78 R-K2+ K-Q2 79 R-K4 and Black does not have the resource Crowder pointed out. WP) Another interesting facet of Diag 3 is that 77 R-K4+? K-B3! and if 78 K-B8 RxB

This was the longest game, both in number of moves and total clock time I have ever played, and its tiring length must have contributed to the poor play of both players in the game's later stages. (I wish I were somewhere else so I could go home. This marathon was played at my house and ended around 2 am. WP)

MC #2, DIAG #3 1 Nc4: is not sound. White wins the Queen, but pays too high a price after 1 ... bc 2 Bg5 Nf4 3 Qf1 Nh3: 4 g4 Qg5: 5 hg Ng5: White can try 3 gf h6 4 Qg2 Re4:, but this line ties up White's entire K-side to hold down Black's Queen. 2 .. Bb2: before Nf4 gives Black even better chances. Better may be 1 Qf2 hoping Black doesn't find 1 .. Nf6!

## The 1973 State Chess Championship

		1	2	3	4	
1	Warren Porter	XX	$\frac{1}{2}\frac{1}{2}$	$1\frac{1}{2}$	1 1F	$4\frac{1}{2}$
2	Peyton Crowder	$\frac{1}{2}\frac{1}{2}$	XX	$\frac{1}{2}\frac{1}{2}$	1 1F	4
3	Richard Burkhardt	$0\frac{1}{2}$	$\frac{1}{2}\frac{1}{2}$	XX	$\frac{1}{2}$ 1F	3
4	Richard Doredant	00F	00F	$\frac{1}{2}$ 0F	XX	$\frac{1}{2}$

When Crowder was unable to beat Burkhardt in the first round, Porter took a slim  $\frac{1}{2}$  point lead by beating Doredant. While Crowder won a fairly easy point against Doredant, Porter had some good luck against Burkhardt when Burkhardt failed to take advantage of 7 e3?? and the hole created on d3. In the 3rd round, the two Richards played to a draw, and Doredant subsequently withdrew. He must have had other things on his mind since his chess was not up to par this weekend. Any other weekend he could have been a dangerous contender.

In the showdown rounds, Crowder had White first. Porter played a Caro-Kann since he could be content with a draw and felt that Crowder, in a must-win situation, might stick his neck out too far. Boy, was he fooled! In the rematch Porter wanted a win for personal reasons and had strong Queenside pressure for most of the game. Knowing that a draw would suffice while a loss would be a disaster, he started to waver and made a few sloppy exchanges and Pawn moves. Faced with the loss of a Pawn, he scrambled for counterplay on the open files. Crowder, in time trouble, could find nothing better than allowing a 3-rep to stop a sac which would lead to at least a perp.

With another must-win situation against Burkhardt, Crowder had to allow all minor pieces off the board before he started to get any pressure. He had two winning chances that he didn't take which he pointed out after the game: 31 R-K8+ K-R2! 32 R/B-B8 QxP! and after 41 ... Q-K5+ 42 R-B3? and if 42 ... R-B4 43 Q-R3 Q-K7+. For this draw, Burkhardt was in a position to receive a courtesy draw from Porter in the final round.

Rd 1 Crowder-Burkhardt Game elsewhere in this issue.

Doredant-Porter 1 e4 c5 2 Nc3 Nc6 3 Nf3 e6 4 d4 cd 5 Nd4: a6 6 g3 Nf6 7 Bg2 Qc7 8 00 d6 9 Re1 Bd7 10 Bg5 Be7 11 Rc1 h6 12 Be3 Ne5 13 Rb1 00 14 h3 Rab8 15 a4 Nc4 16 Bc1 Rfc8 17 b3 Na5 18 Bb2 b5 19 ab ab 20 Rc1 b4 21 Nb1 Nc6 22 c3 bc 23 Rc3: Qb6 24 Nf3 d5 25 ed Nd5: 26 Rc4 Qb3: 27 Rc2 Ndb4 28 Rd2 Qd1: 29 Red1: Be8 30 Nc3 Na5 31 Bf1 Nc4 32 Bc4 Rc4 33 Ne5 Rcc8 34 Nd7 Rb7 35 Na4 Nd5 36 Rd5: ed 37 Rd5: Rd7: 0:1

Rd 2 Porter-Burkhardt 1 c4 f6 2 Nc3 e5 3 g3 Ne7 4 Bg2 Nbc6 5 Nf3 d5 6 cd Nd5: 7 e3? Bg4 8 Qa4 Bf3: 9 Bf3: Nb6 10 Bc6:+ bc 11 Qc6:+ Qd7 12 Qd7:+ Nd7: 13 d3 Nc5 14 Ke2 c6 15 b3 Rd8 16 Rd1 Be7 17 Bb2 Ne6 18 Rac1 Rd7 19 Na4 Rc7 20 Rc4 Bd6 21 Bc3 Kd7 22 Bb4 Re8 23 Bd6: Kd6: 24 Rdc1 g5 25 Nc3 Nc5 26 b4 Nd7 27 Nb5+ 1:0

Doredant-Crowder 1 P-KN3 N-KB3 2 B-N2 P-K4 3 P-Q3 P-Q4  
 4 N-KR3 P-B3 5 N-Q2 B-K2 6 00 P-KR3 7 P-K4 B-K3 8 P-N3 Q-Q2  
 9 N-B3 BxN 10 NxP Q-K3 11 B-N2 BxB 12 PxB Q-R6 13 R-K1 BxB  
 14 P-KB3 00 15 P-QB4 B-K3 16 P-Q4 QN-Q2 17 N-Q3 B-Q3 18 N-B2  
 Q-R4 19 R-K3 KR-K1 20 Q-Q2 N-B1 21 P-Q5 PxB 22 BxN PxB  
 23 PxB B-Q2 24 N-K4 RxN 25 RxR B-B4+ 26 R-Q4 QxQP 27 R-Q1  
 B-B3 28 P-QN4 B-N3 29 Q-B4 QxBP 30 QxQ BxQ 0:1

Rd 3 Burkhardt-Doredant 1 c4 e5 2 Nc3 Nf6 3 d3 Nc6 4 g3 Bc5  
 5 Na4 Bb4+ 6 Bd2 Bd2:+ 7 Qd2: d6 8 Bg2 00 9 e3 Ne8 10 Ne2 f5  
 11 f4 Nf6 12 fe Ne5: 13 b3 Qe7 14 Nf4 c6 15 Nc3 Neg4 16 00  
 Qe3 17 Qe3: Ne3: 18 Rf3 Ng2 19 Kg2 Re8 20 h3 Bd7 21 Kf2 g5  
 22 Ng2 g4 23 hg Ng4:+ 24 Kg1 Re7 25 Nh4 Ne5 26 Re3 Rae8 27  
 Rf1 Rf7 28 d4 f4 29 Rf4 Rf4 30 gf Nf7 31 Re8 Be8 32 Kf2 Bd7  
 33 Ne4 Kg7 34 c5 d5 35 Nd6 b6 36 nf7 Kf7 37 b4 Kf6 38 a3 b5  
 39 Kg3 Bf5 40 Ng2 Be4 41 Ne3 h5 42 Kh4 43 Kg3 Kf6  $\frac{1}{2}:\frac{1}{2}$

Crowder-Porter 1 e4 c6 2 d4 d5 3 e5 Bf5 4 f4 e6 5 Nf3 c5  
 6 c3 Nc6 7 Be3 Qb6 8 Qd2 cd 9 Nd4: Nd4: 10 Bd4: Bc5 11 Bc5:  
 Qc5: 12 Na3 a6 13 Bd3 Ne7 14 Nc2 Rc8 15 Nd4 Bd3: 16 Qd3: Nc6  
 17 Kd2 Nd4: 18 Qd4: Qd4: 19 cd Rc4 20 Kd3 Kd7 21 b3 Rc6  
 22 Rac1 Rbc8  $\frac{1}{2}:\frac{1}{2}$

Rd 4 Porter-Crowder 1 c4 Nf6 2 Nc3 e5 3 g6 d5 4 cd Nd5 5 Nf3  
 Nc6 6 d3 h6 7 Bg2 Bb4 8 Bd2 Be6 9 Rc1 Nc3: 10 Bc3: Qd6 11 Qa4  
 Bc3:+ 12 Rc3: 00 13 00 Nd4 14 Re1 c6 15 a3 Nb5 16 Rcc1 Nd4  
 17 Nd4: ed 18 b4 a6 19 Qa5 Rac8 20 Qc5 Qd7 21 a4 Rfd8 22 Ra1  
 Qc7 23 Rec1 Bd5 24 Bh3 Be6 25 Bd6: fe 26 b5 Rd5 27 Qc4 ab  
 28 ab c5 29 e4 de ep 30 fe Qd6 31 Ra3 b6 32 Rf1 Rd8 33 Ra7  
 Rd7 34 Ra8+ Rd8 35 Ra7 Rd7 36 Ra8+ Rd8 37 Ra7  $\frac{1}{2}:\frac{1}{2}$

Rd 5 Burkhardt-Crowder 1 P-QB4 N-KB3 2 NQB3 P-K4 3 P-K4  
 4 KN-K2 N-B3 5 P-QR3 BxN 6 NxP P-Q3 7 P-Q3 B-Q2 8 B-N5 P-KR3  
 9 BxN QxB 10 N-Q5 Q-Q1 11 B-K2 N-Q5 12 00 P-QB3 13 N-K3 Q-N4  
 14 P-QN4 00 15 B-N4 P-KB4 16 PxB NxP 17 BxN BxB 18 NxP RxN  
 19 Q-B1 Q-N5 20 Q-K3 R-N4 21 Q-K4 Q-K3 22 P-B3 R-KB1 23 Q-K3  
 R-B5 24 P-N3 R-Q5 25 P-B4 R-B4 26 QR-K1 Q-N3 27 K-R1 R-R4  
 28 R-B3 P-N3 29 Q-Q2 PxB 30 RxP RxQP 31 R-K8+ QxR 32 QxR  
 Q-K4 33 R-K4 Q-R8+ 34 K-N2 R-K4 35 R-B4 Q-N7+ 36 R-B2 Q-B8  
 37 QxP Q-K6 38 QxP QxRP 39 Q-R8+ K-R2 40 Q-QN8 Q-K6 41 QxRP  
 Q-K5+ 42 R-B3? Q-K7+? (R-B4 Haley) 43 R-B2 Q-K5+ 44 R-B3?  
 Q-K7+ 45 R-B2 Q-K5+  $\frac{1}{2}:\frac{1}{2}$

Rd 6 Burkhardt-Porter 1 c4 Nf6 2 Nc3 d5 3 cd Nd5: 4 Qc2 c6  
 5 g3 Nb4 6 Qb3 e5 7 a3 Be6 8 Qa4+ b5 9 Nb5: cb 10 Qb5:+ N4c6  
 11 Bg2 Qb6 12 a4 Bc5 13 Nh3 a6 14 Qb6: Bb6: 15 00 Ra7  $\frac{1}{2}:\frac{1}{2}$

The Starkville Tornado will be held concurrently with the  
 Intercollegiate tournament. Registration: 8-8:45 AM.  
 Rounds at 9, 12:30, 4, 7:30. Time limit 50/75. EF \$2.00  
 plus USCF & MCA. Prizes per entries. Other details on page 1.  
 Open to all players not playing in the Intercollegiate.

Jackson Chess Club Championship starts Mar 5 for five successive  
 Tuesdays. USCF, MCA, & JCC membership required (JCC \$5).  
 EF \$2.00. Register by 7 pm, Mar 5 at St James Episcopal Church  
 in Jackson. TL: 40/90

## A Proposal For the State Championship Tournament

At the organizational meeting of the MCA in Natchez last August, two proposals were made for determining the players who would compete for the state crown. One of these requires the players to collect points for results near the top in MCA tournaments with the top five players meeting in the end, and the other allows high finishers to qualify automatically after achieving one high result with the players meeting in a Swiss System tourney. The following system is similar to the former system except that it is based on the same thing ratings are based on: how well a player does against his set of opponents.

This system is based on a player's performance rating, i.e. a player of what rating would achieve this result against this set of opponents without winning or losing any rating points. This is calculated as follows:

1. Find the average rating of all players having a rating.
2. Estimate ratings for unrated players using this formula:

$$\text{Est Rating} = \frac{W - L}{\text{games played}} \times 400 + \text{Av. Rating}$$

3. Calculate performance ratings for all players having a plus score.

$$\text{Per Rating} = \frac{W - L}{\text{games played}} \times 400 + (\text{Average of opponents' wall chart or estimated ratings.})$$

In this step, games won against players having wall chart or estimated ratings less than 1200 will be assumed to be against a player rated at 1200. Likewise, opponents with ratings above 2000 will be reduced to 2000 if the player lost. This adjustment will prevent a player from losing points by winning a game or winning points by losing.

4. Qualifying points are calculated as follows:

$$\text{QP} = \frac{(\text{Per Rating} - 1600)}{20} \quad \text{These QP's would be awarded for any Performance Rating over 1610.}$$

As an example let's take Rick Carter, who finished 13th at the Dixie Dandy, his first tournament. First, the average rating was 1484. Since he won 3 and lost 2, his estimated rating is  $[(3-2)/5] \times 400 + 1484$  or  $80 + 1484$  or 1564. His opponents were rated 1564, 1404 (est. rat), 1511, 1628, and 1557. The average of these is 1546. This added to 80 gives a performance rating of 1626, which would have been good enough for 1 QP had Mr. Carter been from Mississippi.

It should be noted here that Mr. Carter's USCF rating is 1606 based only on this tournament. This proposed system differs from the USCF's method of calculating performance ratings for two reasons. 1) The rating is determined only from a player's opponents. If an unrated player met three other unrated players his rating would be recomputed three times while this system assumes the unrated opponents met the 'average' field. 2) The USCF uses more up to date ratings than what appears on the wallchart.

In this system the five players with the highest number of QP's would be invited to participate in a round-robin tournament with the current champion. The right of the challengers to be in this event would be easily seen since they would have had excellent results in a few events and/or good results in several events. Contenders would not be awarded points on the basis of tie-break or size of the field, only on how well they played, the only thing they have any control over.



It is our belief that this system will produce two beneficial changes in Mississippi chess. First, players will be fighting for a win in every round and will not be inclined to take a "safe" draw in the final round. Second, organizers would be holding more tournaments which would attract A's and Experts from neighboring states, since this would give more Miss. players a shot at high performance ratings and Qualifying Points.

### Sample Performance Ratings

#### Dixie Dandy, Oct 73

1 Joe Farris	5	1889
2 Byron Watson	4½	1853
3 Paul Newsom	4	1641
4 Allan McCray	4	1847
5 Allan Freberg	4	1617
6 Larry Wright	3½	1653
7 Robert Williams	3½	1699
8 B Montgomery	3½	1624
9 Peyton Crowder	3	1580
10 Howard Gary	3	1595
11 A Crawley	3	1593

#### 2nd Dixie Open, Jan 74

1 Stan Perkins	4½	1961
2 Troy Miller	4	1755
3 Peyton Crowder	4	1842
4 David Abel	4	1788
5 Robert Williams	4	1730
7 Harold Melvin	3½	1700
8 Anthony Crawley	3½	1725

Persons wishing to present different proposals for determining the state champion are invited to submit them to the Mississippi Chessletter for publication. Members may comment on this or any subject which may be taken up at the MCA business meeting.

Mississippi Postal Championship. The first MPC got under way in January with Kim Hunt, John Hedman, Alan Freberg, Rick Johnson, John Weeks, Charles Dean, Roger Mathes, and NM Perkins, and Rickey Walker signed up. Jimmy Aden then sent me a late entry at the same time N M Perkins dropped out and was allowed to replace him.

# APEX

## PRINTING COMPANY

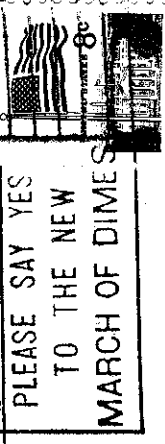
4525 HIGHWAY 80 WEST  
JACKSON, MISSISSIPPI 39209

PHONE 922-4232

**SHOOT HOLES  
IN YOUR  
HIGH  
PRINTING  
COSTS**



David Abel {4}	Unr	1302/10	Baird Montgomery	{1}	1482/10	Jerry Smith	Unr
Jimmy Aden	Unr		Jim Montgomery			Steve Spencer	1587
Robert Allen	Unr	1413/7	Grenouille Nellen			Mike Stephenson	1268/15
Lawton Barnes	Unr		Paul Newsom {5}		1620	Michael Sullivan	Unr
William Barrentine	Unr	1473/15	Garland Orr			R L Summers	Unr
R E Bird	Unr		F P Parham		1836	George Thatcher	Unr
A R Burford	Unr		Richard Parker			Gosby Thompson	Unr
Richard Burkhardt	Unr	1527	Floyd Patterson			P W Van	Unr
Hillman Butler	Unr		N M Perkins			Clif Vick	Unr
Paul Cain	Unr		Stan Perkins {7}		1603/15	Rickey Walker	Unr
George Carter	Unr		Robert Pogue		1684/10	Dan Wlaters	Unr
Richard Carter	Unr	1337	Warren Porter		1938	Byron Watson {6}	1657
E D Clark	Unr		Jay Pryor			Robert Watson	Unr
Ray Cox	Unr		Johnny Pryor			Dwight Weaver	Unr
Anthony Crawley {1}	Unr	1623	C J Pusch			John Weeks	1230
Peyton Crowder {5}	Unr	1840	Elliot Ranney			Walter Whitehead	Unr
Bill Daniels	Unr		David Ratliff		1444/5	Robert Williams {2}	1521
Joseph Datlof	Unr		Jimmy Robbins		1586/15	Chuck Wilmore	1374/10
Cahrlies Dean	Unr	1575	T D Roberson			Michael Wilmore	Unr
John Dribbon	Unr	1574/5	Clayton Rowland		1381	Gunnar Woodard	1464/5
Doyle Ellis	Unr		Kevin Scanlon		1385	Laird Woodard	1200/9
Judson Farmer	Unr	1360	Leo Scanlon			Larry Wright	1566
Joe Farris {7}	Unr	1726	Gordon F Scott		1437	Chris Young	1547/5
Allan Freberg {4}	Unr		Billy Shea		1317/15	THESE RATINGS ARE THRU	
Tommy Freeland	Unr	1032/5	Mike Simms			THE DIXIE DANDY	
Howard Gary	Unr	1316/12					



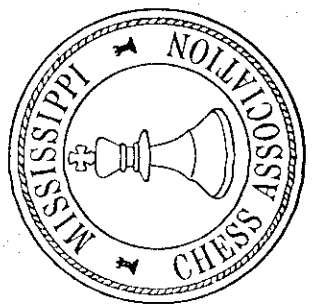
JACKSON, MS  
1974  
FEB 20  
PM 39

PLEASE SAY YES  
TO THE NEW  
MARCH OF DIMES

*Steve Spencer*

6009 Colver Bms Dr.

*Savannah MS 38671*



Return:  
Box 12222  
Jackson, MS 39211

Subscriptions: (\$3)  
719 Laurelot Rd.  
Jackson, MS 39206