



MISSISSIPPI CHESS ASSOCIATION

A USCF affiliated organization dedicated to the support of Chess in Mississippi

MISSISSIPPI CHESS LETTER

Vol II

Number 1

July 74

President: Bill McDonald, 3585 Lanell Lane, Pearl 39762
Vice President: Jerry Krouse, Box 1003, Natchez 39120
Treasurer: Gordon Scott, 5552 Crepe Myrtle, Jackson 39206
Parliamentarian: Judson Farmer, 1229 Lynnwood Dr, Jackson 39206
Editor: Warren Porter, Box 12222, Jackson 39211

Our congratulations to our new officers. All of them have been active players or promoters and will assist the continued growth of the MCA in every way they can. It still takes you, the individual member to make it grow.

The top qualifiers in the race for the State Championship are Krouse (21), Farris (11), G Woodard (8), Campbell (8), Abel (8), and Crowder (7). Invitations are being sent to all of the above to participate in the State Championship in Natchez.

Dues have been increased to \$5/year for seniors and to \$2.50/year for those who will be under 21 at expiration. The old rates will be in effect only for newcomers to the MCA participating in the Miss Open this year.

Next year the business meeting will be rescheduled to allow more members to participate. This year only 30 players were present at the start of the meeting. It was planned to appoint a postal chess director but none of the postal players showed up (including those living in Jackson). Interested parties should express their views on postal chess to McDonald.

We appreciate the vote of confidence the officers and members of the MCA gave the Chessletter. Our thanks to those who submitted games, articles, crosstables, or letters to the MCL; with this type of cooperation, this year should be better than ever.

No ratings this month; with summer camp coming up we are in a lot of time pressure.

MISSISSIPPI OPEN - AUGUST 2-4 - NATCHEZ

5-SS, 45/2, Prentis Motel, Meeting Room., Highway 61 South, Natchez.
EF: \$12, Jrs. \$10. USCF-MCA Membership required. \$\$ 100-50, \$10 each to 1st A, B, C, D E; Trophies to top 2, top 2 A, B, C, top D, E, Unrated.
Reg: 8:30-9:45 AM 8/3, rnds. 10-3-8-, 8-1. Ent: Jerry Krouse, P. O. Box 1003, Natchez, Ms 39120.

A 5-round single RR for the State Championship will be held simultaneously.

Affiliated with the UNITED STATES CHESS FEDERATION

AN OPEN LETTER TO THE MCA MEMBERSHIP

One year ago the Mississippi Chess Association was reborn into the most serious effort of Chess promotion this state has ever seen. Under the untiring leadership of Dr. Peyton Crowder, the MCA has grown and responded to the needs of Chess in Mississippi. The Association owes Dr. Crowder a debt it can never fully repay.

We have come a long way in this past year, but this does not give us a license to rest on these achievements. Instead, it should build our desire for greater and more exciting challenges. I offer a watch-word to the membership which expresses the theme of this new administrative year---

ACTION

- A - Assessment - Let's take a close look at where we are and where we want to go. This is not only true of the Association but also of the local clubs.
- C - Change - If present procedures or customs do not meet the need, don't be afraid to make or suggest responsible alternatives.
- T - Tournaments - This past year we have doubled the number of tournaments in Mississippi. We have the ability to double again. Let's do it. The Association has a number of qualified people who are anxious to help local clubs organize tournament play.
- I - Imagination - Chess players are among the most creative people in the world. We have a duty to harness this talent for the improvement of the MCA.
- O - Organization - The By-Laws of the MCA provide that each affiliated club has a voice toward MCA policy through its elected President or representative. Organize yourselves into affiliated clubs and help guide your association.
- N - Numbers - We must increase our number of members to be able to provide needed services to the membership at reduced cost. More effort is needed in the fields of Public Relations, Advertising, and Recruitment. This has worked for other sports and it will work for Chess.

Progress doesn't just happen, YOU have to make it happen. YOU are the MCA! The MCA will be nothing without YOUR efforts. I am requesting each club President and each group interested in the popularity of Chess to write to me. Your ideas and problems are my concern.

We have the Association. We have the talent. We have the goal. Let's put these into ACTION for a stronger, more important MCA.

Bill M. Smale
President
Mississippi Chess Association

BARON MUNCHAUSEN - Chessplayer -

Traveling by stage-coach up the Rhine, we stopped for the night at a local hostelry and after disposing of our belongings and making ourselves as comfortable as could be, we gathered in the tap-room for a grog before dinner. Among our number was Baron Munchausen, who had been regaling us with tales of the fantastic events in which he had so often chanced to become involved, and one of our party, observing two locals playing chess in a corner, turned to the Baron and asked if he played the game.

"Naturally", he replied, "for it is a part of a liberal education not only to play chess but to play it well."

"In fact," I remarked, having had about enough of the Baron's tales, "I suppose you have hardly ever been beaten?"

A dark look came over his face but he quickly recovered his usual serenity. "Ah, my friend", he replied, "shall I ever forget it? As you know, I have met the most celebrated players in the world. Few of them could match me, but once ..." He shook his head and sipped his grog.

"Long ago when I was young, I used to frequent the celebrated Cafe de la Regence, the memorial of the glorious times of Deschappelles and de la Bourdonnais. Soon my strong game, and with it my untiring tongue, made me unbeatable. Once, while watching a game and following my usual habit of discussing in a loud voice the merits and demerits of various moves, I noticed a stranger who apparently took exception to my ironical remarks. Irritated, I decided to teach him a lesson on the spot. "Sir", said I, "will you play a game with me? No, no! Do not dream of robbing yourself", I cried, seeing he had it in his mind to refuse. "We will play at once. Here is a free table." With a frightened look he sat down and I led off with the white pieces: 1 P-K4 P-Q4 2 P-K5 P-Q5 3 P-QB3 P-KB3 4 KPxP QPxP 5 PxKP Pxp+ 6 BxP BxP 7 N-KB3 N-QB3 8 N-B3 N-B3 9 N-K2 N-Q2 10 N/3-Q4 N/3-K4 I saw I could win his Queen and played 11 N-K6, but he replied 11 ... N-Q6mate. 'One game proves nothing,' I said. 'Let us play again.' I took the white pieces once more. 1 P-K4 P-Q4 2 P-Q3 P-K3 3 N-KB3 N-QB3 4 B-N5 B-N5+ 5 K-K2 Q-Q2 6 N-B3 N-B3 7 P-QR3 P-KR3 8 B-R4 B-R4 9 P-K5 P-Q5 10 N-R4 N-R4 11 N-B5. Having gained control of this important square, I was stupefied when he mastered me with 11 ... N-B5 mate. The news had spread that I was losing and by this time the gallery was enormous. Everybody had stopped playing in order to assure themselves of the incredible fact of my defeat. I hastily set up the pieces and began a third game with the white pieces, playing for an exchange variation to avoid his complications. 1 P-K4 P-Q4 2 P-Q4 P-K4 3 P-QB4 P-KB4 4 P-B4 P-B4 5 PxKBP PxQBP 6 PxBP Pxp 7 QBxP KBxP 8 BxP BxP 9 BxQN BxKN 10 BxN BxN 11 QRxB KRxB 12 Rx8 Rx8. After consideration I exchanged queens with 13 QxQch. Imagine my astonishment when he answered 13 .. KxK and said meekly, 'check?' 'What on earth are you playing at?' I cried. 'Put my king back at once!' 'But you played that move', he said. 'Surely you know the king from the queen by now?' I remarked in my most crushing manner. 'No', he replied,

(Continued bottom of next page)

EDITORIAL

Peyton Crowder won the debate at the MCA business meeting and all points of his proposal will be in effect for the coming year, beginning at the Miss Open in Natchez this year. I would like to thank everyone who supported Jerry Krouse's and my proposal of course, but anyone who had enough interest in the affairs of the MCA to attend the business meeting deserves a commendation (regardless of how he voted). Enough on that subject for the next ten months.

It is difficult to express this next topic in a tactful way, but we'll try. Throughout this past year there has been only one tournament in the state which offered a decent cash prize. This has been unfortunate, especially to our lower rated players. Most of our tournaments have had only two or three A players and not many more B players. Since chess has only recently caught on it is no disgrace that we don't have more A's and B's, but it is a shame that no effort is being made to attract the players who can give our tournament newcomers some valuable experience.

To those organizers who held an MCA event last year and did not have to pay too much for the playing site, seriously consider holding a tournament with at least \$150 in prizes.

For my own part I enjoy participating in tournaments where I can meet a number of Class A and Experts; after all, I enjoy pulling off an upset just like everyone else. While I rarely (so far never) go to a tournament with the expectation of showing a large profit, on occasion I have earned a major share of my expenses back.

When I see an ad for a cash tournament, I am willing to spend the \$40 or \$50 it takes to travel to and play in it. On the other hand, an ad for a trophy tournament is an invitation for me to stay away. Nuff said.

CLUB CORNER

The Jackson Chess Club will be holding a business meeting on July 30 to discuss other activities for the club to get into, such as lessons, ladder games, simuls, and TD clinics. The meeting will get under way at 7:30 at St James Episcopal Church on Oakridge Drive. Our new treasurer is Bill Haley.

Chess club presidents are encouraged to use this section for items of interest to their members or MCL readers.

(Cont. from previous page)

'I don't play chess. I tried to tell you at the start but you wouldn't listen. I just copied your moves. When you moved two squares to the left on your side, I did the same on mine.' Imagine the roar of laughter from the spectators. I never felt less like laughing. 'Well', I said, 'I doubt if a stranger thing has ever happened to any chessplayer. It could only happen to an extraordinary man like me.' My honor was saved but I didn't play chess again for a long time.'

MISSISSIPPI CHESS CONGRESS

June 28 - June 29, 1974

Name	Rating	1	2	3	4	5	TOTAL
1. Selby Anderson	LA 2035	W18	W21	W3	W14	D2	4½
2. Charles Applewhite	LA 1959	W40	W17	W6	W12	D1	4½
3. Charles Dean	MS 1594	W15	W26	L1	W27	W12	4
4. Jerry Krouse	MS 1851	W36	W30	D7	W20	D8	4
5. Rolland May	MS 1595	W35	W28	L12	W19	W16	4
6. Andrew Campbell	MS 1590	W42	W39	L2	W13	W14	4
7. Sam P. Brown	MS 1483	W43	W13	D4	L8	W22	3½
8. Gunnar Woodard	MS 1583	L34	W41	W24	W7	D4	3½
9. Richard Doredant	MS 1647	L27	W25	D34	W36	W21	3½
10. Ed Issa	MS 1563	D37	L20	W35	W26	W23	3½
11. Tom Clark	MS 1577	L28	D35	W38	W34	W20	3½
12. Clayton R. Rowland	MS 1298	W32	W29	W5	L2	L3	3
13. Peyton Crowder	MS 1878	W31	L7	W18	L6	W27	3
14. Byron Watson	MS 1626	W41	W34	W27	L1	L6	3
15. L. J. Bounds	LA 1218	L3	L16	W40	W30	W29	3
16. Mike Burkhardt	MS 1532	L26	W15	W39	W29	L5	3
17. Donny Gray	AR 1557	W24	L2	L26	W41	W31	3
18. Buck Marshall	MS 1426	L1	W44	L13	W28	W36	3
19. M. A. Farrell	MS 1475	L39	W42	W22	L5	W26	3
20. Miklos Bencze	MS UNR	D22	W10	W30	L4	L11	2½
21. Jimmy Robbins	MS 1570	W44	L1	W28	D23	L9	2½
22. Leo Myers	MS 1576	D20	W37	L19	W32	L7	2½
23. Harold W. Melvin	MS 1717	W25	L27	W33	D21	L10	2½
24. Jim Mabry	MS UNR	L17	W40	L8	D25	W34	2½
25. U. Jay Gilbert	MS 1354	L23	L9	W44	D24	W37	2½
26. Clinton Oehms	MS UNR	W16	L3	W17	L10	L19	2
27. Robert E. Sanders	MS 1303	W9	W23	L14	L3	L13	2
28. John Barrett, Jr.	MS UNR	W11	L5	L21	L18	W40	2
29. Steve Lundquist	MS 1662	W33	L12	W31	L16	L15	2
30. David L. Hayes	MS 1463	W38	L4	L20	L15	W42	2
31. John Gray	MS 1399	L13	W43	L29	W39	L17	2
32. Joe Farris	MS 1638	L12	L33	W42	L22	W35	2
33. L. Judson Farmer	MS 1347	L29	W32	L23	L35	W39	2
34. James M. Knight	MS 903	W8	L14	D9	L11	L24	1½
35. Laird Woodard	MS 1227	L5	D11	L10	W33	L32	1½
36. Chuck Wilmore	MS 1383	L4	D38	W37	L9	L18	1½
37. A. R. Burford	MS UNR	D10	L22	L36	W38	L25	1½
38. Stephen D. Spencer	MS UNR	L30	D36	L11	L37	W41	1½
39. Michael A. Smith	MS UNR	W19	L6	L16	L31	L33	1
40. Richard Carter	MS 1411	L2	L24	L15	W44	L28	1
41. Michael A. Wilmore	MS 1245	L14	L8	W43	L17	L38	1
42. Dwight K. Weaver	MS 1147	L6	L19	L32	W43	L30	1
43. Anthony Wayne Scott	MS UNR	L7	L31	L41	L42	W44	1
44. Robert Bounds	LA UNR	L21	L18	L25	L40	L43	0

Games from Jackson

Applewhite-Carter 1 c4 Nf6 2 Nc3 e6 3 g3 c5 4 Bg2 Qa5 5 Nf3 Nc6 6 0-0
a6 7 d4 b5 8 d5 Ne7 9 de6: fe6: 10 Ne5 Ra7 11 Qd3 Qb6 12 cb5: ab5:
13 Qb5: Qc7 14 Bf4 Ba6 15 Qb3 Qc8 16 Qb6 Be2: 17 Ne2: Ra6 18 Qb5 Ned5
19 Bd5: Nd5: 20 Nd7: Qd7: 21 Qa6: Nf4: 22 Nf4: e5 23 Rfel Bd6: 24 Rad1
Ke7 25 Re5:+ 1:0

Krouse-C Wilmore 1 PK4 PQB4 2 NKB3 PQ3 3 PQ4 PxP 4 NxP NKB3 5 NQB3
PQR3 6 BKN5 PK3 7 PB4 BK2 8 QB3 KNQ2 9 QR5 NB4 10 PQN4 BxB 11 PxB
PK4 12 BB4 PKN3 13 QB3 0-0 14 NK2 NK3 15 PKR4 NN2 16 NQ5 QNQ2 17 PKN4
NK3 18 PB3 PQN4 19 BN3 BN2 20 NB6+ NxN 21 PxN NB5 22 NxN QxP 23 0-0 QxN
24 QxQ PxQ 25 RxP RR2 26 RQ1 BB1 27 RxP RK2 28 BQ5 KN2 29 PN5 PKR4
30 KB2 R1K1 31 R6B6 BK3 32 BxB PxP 33 RB3 RQ1 34 RK3 RKB2 35 RxR+ KxR
36 KK2 PK4 37 RB3+ KK2 38 RB6 RQ3 39 RxR KxR 40 KQ3 KB3 41 PB4 KN3
42 KB3 KB3 43 KN3 KN3 44 PR4 PxBP 45 KxP KB3 46 PN5+ PxP+ 47 PxP+ KN3
48 KQ5 KxP 49 KxP KB4 50 KR6 KQ5 51 PK5 1:0

Farris-Rowland 1 e4 e6 2 Nf3 d5 3 d4 c5 4 ed ed 5 Nc3 Nf6 6 Bg5 h6
7 Bh4 Be6 8 Bb5+ Nc6 9 0-0 Be7 10 Ne5 Qc7 11 Rel a6 12 Bc6: bc 13 dc
Bc5: 14 Qf3 Nd7 15 Nf7: 00 16 Re6: Rf7: 17 Qg3 Bf2:+ 18 Qf2: Rf2:
19 Bf2: Nf6 20 Rael Ng4 21 h3 Nf2: 22 Kf2: Qb6+ 23 Kg3 Qb2: 24 Rc6: Qc2:
25 Nd5: Qd3+ 26 Ne3 Re8 27 Kf2 Rf8+ 28 Kgl Qd2 29 Rocl Qf2+ 30 Khl Re8
31 Nc2 Rel:+ 32 Nel: Qf1+ 0:1

Burford-Issa 1 d4 Nf6 2 c4 c5 3 d5 b5 4 b3 d6 5 e3 g6 6 Nd2 Bg7 7 Bb2
00 8 Be2 Nbd7 9 Nf3 Qb6 10 00 Ba6 11 Qel Rfb8 12 Rel bc 13 Bc4: Bb7
14 e4 a5 15 Qc2 Ba6 16 e5 Ng4 17 e6 Nde5 18 Ne5: Ne5: 19 Be5: Be5:
20 Rbl fe 21 de Rf8 22 Nf3 Bg7 23 Re3 Bb7 24 Ng5 Bh6 25 Rg3 d5 26 Bd3
Bg5: 27 Rg5: Rf6 28 Bg6: hg 29 Rg6:+ Rg6: 30 Qg6:+ Kh8 $\frac{1}{2}$: $\frac{1}{2}$

Hayes-Spencer 1 PK4 PQB4 2 PQ4 PxP 3 PQB3 PxP 4 NxP PK3 5 NB3 BN5
6 QB4 BxN 7 PxP NQB3 8 0-0 PQN3 9 QK2 KNK2 10 RQ1 0-0 11 BR3 RK1
12 NN5 BN2 13 QR5 PKR3 14 QxBP+ KR1 15 NxP RKN1 16 NxQ QRxN 17 BxN
NxB 18 QxN KRK1 19 QB7 KRN1 20 RxP KRB1 21 QxNP ++ 1:0

Marshall-Anderson 1 PK4 PQB4 2 PKB4 NQB3 3 NKB3 PKN3 4 BB4 BN2
5 0-0 PQ3 6 NN5 PK3 7 NQB3 NB3 8 PB5 PKR3 9 PxKP PxN 10 PxP+ KB1
11 PQ3 NKN5 12 PKR3 BQ5+ 13 KR1 NB7+ 14 RxN BxR 15 QB3 BQ5 16 BQ2
PN5 17 QN3 PxP 18 QxNP PxP+ 19 KxP BR6+ 0:1

Anderson-Robbins 1 PK4 PQB3 2 PQ4 PQ4 3 NQB3 PxP 4 NxP BB4 5 NN3 BN3
6 NB3 NQ2 7 PKR4 PKR3 8 PR5 BR2 9 BQ3 BxB 10 QxB QB2 11 BQ2 NB3
12 000 000 13 QK2 PK3 14 NK5 NxN 15 PxN NQ2 16 PKB4 BK2 17 NK4 NB4
18 NB3 PR4 19 QB2 KRB1 20 BK3 RxR+ 21 RxR NQ2 22 NK4 PQN3 23 QK2 RQ1
24 NQ6+ BxN 25 PxP QN2 26 BQ4 RN1 27 QK4 NB3 28 BxN PxP 29 PQ7+ KN1??
[A blunder, but it doesn't matter. After KQ1 the WQ will mop up on
the Kingside.] 30 PQ8Q+ RxQ 31 RxR+ KR2 32 QQ3 1:0

Although a loss is still a loss, it is not hard to guess whether
Marshall or Robbins enjoyed their game more.

Crowder-Brown 1 PK4 PQ3 2 PQ4 NKB3 3 NQB3 PKN3 4 BK2 BN2 5 BK3 0-0
6 PB4 QNQ2 7 NB3 NN5 8 BQ2 PB4 9 PQ5 NN3 10 PKR3 NB3 11 BK3 NR4 12
PKN4 NN6 13 KRN1 BxN+ 14 PxP NxB 15 QQ3 PB4 16 NR4 PB5 17 BxN QxB
18 QQ4 QxQ 19 PxQ PQN4 20 BB3 PK3 21 PxKP BxP 22 PxP BxP 23 NxB RxN
24 RN4 (24 BxN RK1) RK1 25 0-0-0 NB7 26 BB6 R1KB1 27 BQ7 R4B3 28 BxP
NxQR 29 BxP+ KN2 30 KxN RxP 31 BK6 RxR 32 BxR RB7 33 KBI KB3 34 KN2
KK2 35 PQR4 RN7 36 KB3 PQR4 37 PQ5 KB3 38 KQ3 KK4 39 PB3 RxB: 40 PxR

KxP 41 PN5 KK4 42 PB4 KB4 43 KQ4 KxP 44 KQ5 PR4 45 KxP PR5 46 PB5 PR6
47 PB6 PR7 48 PB7 PR8Q 49 PB8Q QR7+ 50 KK7 KK4+ 51 KB7 QB4+ 0:1

Krouse-Hayes 1 PK4 PQB4 2 NKB3 PQ3 3 PQ4 PXP 4 NXP NKB3 5 NQB3 PQR3
6 BKN5 PK3 7 PB4 QN3 8 QQ2 QXP 9 NN3 QNQ2 10 RQN1 QR6 11 BQ3 BK2
12 PB5 NB4 13 0-0 Nxn 14 RxN QB4+ 15 KR1 PQN4 16 BK3 QB2 17 PKR3 PK4
18 QB2 BQ2 19 NK2 BB3 20 NN3 QN2 21 PB4 BXP 22 NxB Nxn 23 QB3 NB4
24 QxQ NxQ 25 BK4 0-0-0 26 PXP PQ4 27 RB1+ KN1 28 PXP PxB 29 RxN+
KR1 30 RR7+ KN1 31 RN1+ KB1 32 R1N7 1:0

D Gray-Applewhite 1 d4 Nf6 2 c4 g6 3 Nf3 Bg7 4 e3 00 5 Be2 d6 6 00 Nbd7
7 b3 c5 8 Bb2 a6 9 Nbd2 Rb8 10 Qc2 b5 11 h3 b4 12 d5 Qc7 13 Rad1 Ra8
14 Ng5 h6 15 Nge4 a5 16 Bd3 Ne5 17 Be5: de 18 Nf6: ef 19 Be4 Ra6 20 Bd3
f5 21 e4 fe 22 Be4: f5 23 Bd3 Bd7 24 Be2 a4 25 Rb1 ab 26 ab Rfa8 27 Bf3
Ra2 28 Rb2 Rb2: 29 Qb2: e4 30 d6 Rc2: 31 dc ef 32 Nf3: Rc8 0:1

Farmer-Farris 1 PQ4 NKB3 2 NKB3 PK3 3 NB3 PQ4 4 PK3 PB4 5 PXP BXP
6 BQ3 NB3 7 0-0 PK4 8 PK4 0-0? 9 PXP NXP? 10 Nxn Qxn 11 BXP+ KxB
12 QxQ BN3 13 NN5+ KN1 14 QK4 BQ2 15 QR7++ 1:0

Anderson-Dean 1 PK4 PK3 2 PQ4 PQ4 3 NQ2 PQB4 4 PXP KPXP 5 BN5+ NB3
6 KNB3 BQ2 7 0-0 BQ3 8 PXP BXP 9 NN3 BN3 10 QXP KNK2 11 QR5 0-0
12 BQ3 NN3 13 NN5 PKR3 14 NXP RxN 15 Qxn NK4 16 QR7+ KB1 17 BXP BXP+
18 RxB QN3 19 QXP+ KK2 20 Qxn+ BK3 21 BK3 1:0

Brown-Krouse 1 NKB3 PKB4 2 PQ3 PK3 3 PKN3 NKB3 4 BN2 BK2 5 PQB4 0-0
6 0-0 PQ3 7 NB3 NB3 8 PQR3 PQR4 9 BQ2 QK1 10 NN5 BQ1 11 BB3 PK4 12
RK1 QR4 13 PQR4 NKN5 14 PR3 NB3 15 NQ2 BQ2 16 PK3 QN3 17 PQ4 PB5
18 KPXP PxBP 19 NK4 PXP 20 NxnP QR3 21 PQ5 NK2 22 QQ2 QxQ 23 BxQ NB4
24 Nxn Bxn 25 NQ4 BQ6 26 NK6 RK1 27 QRb1 PQN3 1/2:1/2

Applewhite-Campbell 1 e4 c5 2 Nf3 d6 3 d4 cd 4 Nd4: Nf6 5 Nc3 a6
6 Bg5 e6 7 f4 Be7 8 Qf3 Nbd7 9 Be4 Nb6 10 Bb3 Qc7 11 000 00 12 Qe2 h6
13 Bf6: Bf6: 14 g4 d5 15 e5 Be7 16 h4 f6 17 ef Qf4:+ 18 Kbl Rf6:
19 g5 Rg6 20 h5 Rg5: 21 Ne6: Qe5 22 Ng5: Qe2: 23 Ne2: Bg5: 24 Nc3 Bd7
25 Nd5: Nd5: 26 Bd5: Kf8 27 Rhf1+ Bf6 28 Bb7: Rd8 29 Be6 Ke7 30 Rfel+
Be6 31 Rd8: 1:0

Hayes-Bencze 1 e4 e5 2 f4 Nc6 3 Nf3 d6 4 Be4 Bg4 5 Bf7:+? Kf7: 6 Ng5+
Qg5: 7 fg Bd1: 8 Kd1: & Black wins

Watson-Anderson 1 PK4 PQB4 2 NKB3 PK3 3 PQ4 PXP 4 NXP PQR3 5 NQB3 PQ3
6 BQB4 NKB3 7 BN3 PQN4 8 PQR3 BN2 9 BN5 QNQ2 10 QK2 RB1 11 PB4 QR4
12 00 RxN 13 PXR QXP 14 QQ3 NXP 15 QxQ NxQ 16 BKR4 PQ4 17 BK1 NK5
18 KR1 BB4 19 NK2 KK2 20 PQR4 PN5 21 PB3 PQR4 22 PXP PXP 23 RQN1 BR3
24 BQ1 NB6 25 Bxn PxB 26 RK1 BQ6 27 RB1 PQ5 28 NN1 BR6 29 RR1 BN7
30 BK2 BxB 31 NxB PQ6 32 RR2 Pxn 33 RXP RQR1 34 PN3 RR4 35 KN2 NN3
36 RK4 PB7 37 RxB PB8Q 39 RN7+ KB3 40 KR3 QB8+ 0:1

The difference in ratings only says who is supposed to win the
game--it doesn't say how. Rowland-Applewhite 1 d4 Nf6 2 c4 g6
3 g3 Bg7 4 Bg2 00 5 Nf3 d6 6 00 a6 7 Nc3 Nc6 8 Rel Na5 9 b3 c5 10 dc
dc 11 Qd8: Rd8: 12 Bg5 Be6 13 Rad1 Nc6 14 Be3 Ng4 15 Na4 Ne3: 16 fe
Bh6 17 Kf2 Nb4 18 Nc5: Nc2 19 Ne6: Be3:+ 20 Kf1 fe 21 Rd8: Rd8:
22 Rb1 Bb6 23 Bh3 Ne3+ 24 Kel Rd6 25 N g5 Nf5 26 Bg2 Be3 27 Ne4 Rd7 ±
28 Ng5?? Bg5 -+ 0:1

Return:

3585 Lanell Lane
Pearl, MS 39208

Memberships (\$5/yr, \$2.50 jr)
5552 Crepe Myrtle
Jackson MS 39206



SPENCER STEPHEN
6009 CEDARBUSH DRIVE
SOUTHAVEN, MS

7410

144

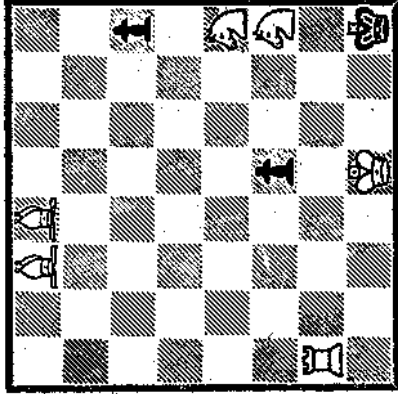
38671

Answer to last month's problem:

- 1 Bg2-f1+ Kd3-e4
- 2 Qb2-e2+ Nc4-e3
- 3 Bf1-g2+ Ke4-e5
- 4 Qe2-b2++

This month's problem is another by Andrew Lockett, composed in 1970. There are 6 white men and 3 black men. The conditions are "White to play and mate in 10 moves with all White pieces returning to their exact locations as shown in the diagram." The first correct answer received from a Mississippi resident will receive a free entry to any MCA tournament, as determined by the postmark. A \$5 EF credit will be awarded in case of tie. Prize must be used before July 1975. Entries to this contest must be postmarked no later than Aug 31, 1974 and sent to the MCL editor.

BLACK



WHITE