

MISSISSIPPI CHESSLETTER

OFFICIAL PUBLICATION

of the

President
Ed Issa
Box 1207
Cleveland 38732

Vice-President
John Masters
1583 Genie Fairway
Greenville 38761

Secretary-Treasurer
Larry Wright
308 Ward Drive
Starkville



Parliamentarian
Judson Farmer
1229 Lynnwood Dr
Jackson 39206

Postal Director
Jimmy Aden
228 Grace St
Clarksdale 38614

Editor
Warren Porter
Box 12222
Jackson 39211

Vol III

Special Issue

January 76

Do you play chess? If you do, then you may or may not know that there's a state chess organization in Mississippi which is working to promote tournaments for you to play in. This special issue of the MCL is being mailed to all nationally rated chess players in the state--which may include several who haven't heard much about the Mississippi Chess Association.

The MCA is trying to make it easier for you to play in rated chess events, and to compete for the state championship. For this year, chess players joining the MCA for the first time can play in their first MCA event without paying state dues. The dues of \$3 for adults and \$1 for juniors will be collected at the second MCA event you play in.

Are you interested in becoming a regional editor for the MCL? Regional eds are responsible for submitting tourney games, match games, skittles games, reports of local events, plus articles on the opening, middlegame, or ending to central editor Warren Porter and his assistant, Rick Johnson. Some parts of the state already have regional eds, but most don't. Interested? Write Porter or Ed Issa.

OBIT: Greenville Chess Club

Due to lack of interest, the Greenville Chess Club has died a "natural" death. The final blow came when Ed Issa and John Masters--who had been running the GCC--started running the MCA instead. Interest in Greenville just isn't enough to support a local chess club. Issa is considering forming a Mid-Delta Chess Club, to serve an area to include Washington, Bolivar, Sunflower, Sharkey, Issaquena, Leflore and perhaps Coahoma counties. The proposed club would meet in a different location every month or so--if meeting sites can be secured. Interested persons should write Issa. Volunteers, anyone?

--Ed Issa

2nd Greater Jackson Open

5-ROUND SWISS

Feb 21-22, 1976

Time control: 45 moves in the first 2 hours, 12 moves per half-hour thereafter.

Played at: Admiral Benbow Inn, 905 N State Street. Take Exit 31 (Fortification Street) off of I-55 north. Turn left at N State St.

Entry fee: \$12, if under 21 \$8. USCF & MCA membership required. Out-of-state OK. See front page for details of the MCA free pass.

Prizes: 1st: \$125, 2nd \$25 guaranteed minimum. Up to 60% of the profits (remainder goes to top two places) will be used for class prizes depending upon the number of entrants in each class.

Schedule

Feb 21	8am - 8:45 am	Registration
Feb 21	9 am	Round 1
Feb 21	2 pm	Round 2
Feb 21	7 pm	Round 3
Feb 22	8:30 am	Round 4
Feb 22	1:30 pm	MCA Membership Meeting
Feb 22	2 pm	Round 5

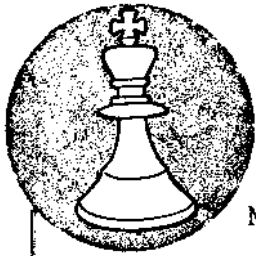
Hotel rates: \$16, 23.50, and 26.50 for 1, 2, and 3 people per room respectively.

Entries and Enquiries: Rick Johnson, 735 Lawrence Rd, Jackson 39206

No Smoking.

Paid Ad.





MISSISSIPPI CHESS ASSOCIATION

A USCF affiliated organization dedicated to the support of Chess in Mississippi

Minutes of the Dec. 14, 1975 Business Meeting, Hattiesburg

President Issa called the meeting to order. Mention was made that the MCA might invest in chess events in some areas because of inactivity in those areas. There was a reminder that January 15 was the deadline for the February Chessletter. Issa requested that editorials be signed, kept to a minimum. It was pointed out by Rick Johnson that sometime there were issues, politics. There was a request for at least one game from each region for each issue of the Chessletter.

Vice-Pres. Masters spoke about tournament schedules. He said that holidays should be avoided because nearby states have traditional tournaments then. He said Louisiana has several large tournaments in May, therefore the Miss-Lou may be changed from May to June. Sec.-Treas. Wright reminded members that now the USCF tournament announcements give the exact dates to be received in Newburgh to appear either once or twice in CL&R before the tournament. Masters gave a tentative tournament schedule which is as follows.

Jan 10-11	4th Dixie Open	May ??-??	Starkville
Jan 23	Computer Match	June 18-20	Miss.-Lou.
Feb 12-14	ICLA Univ., Ala.	July 16-18	Team(any 4) Independent at Jackson
Feb 20-22	Greater Jackson Open		
Mar 12-14	Oxford ?	July 30	
Apr 2-4	Team(College) at Hattiesburg	-Aug 1	Greenville Open
		Aug 20-22	Championship @ Jackson
May 21-23	Jackson ?	Sept 24-26	Gulf Coast

Joe Datlof spoke about organization. He said to go to a motel and tell them they could advertise their place when a chess tournament is held there. Masters said there are to be five copies of tournament results for northern Miss., four for southern. Results are to be sent to the USCF, Warren Porter, James Little(North), John Masters, and Larry Wright. Masters is to keep up with qualifying points, Wright with free passes, and Wright is to send names of expiring memberships to Issa. The members voted in favor of a 5 vs. 5 match with Louisiana. Warren Porter was paid \$5.42 for postage, etc.

The MSUCC was paid \$34.30 for reimbursement of the loss at the 1975 Championship. This was decided by a vote on the motion by Judson Farmer to have the President authorize the Vice-Pres. and Sec.-Treas. to sign the check. Issa called the roll and the vote was as follows.

Vice-Pres. Masters	abstain	Gulf Coast	Datlof	yes
Sec.-Treas. Wright	yes	Jackson R.	Johnson	yes
Editor Porter	yes	MSU	Crowder	abstain
Parlim. J. Farmer	yes	USM	Penny	yes
Greenville Dicesare	yes			

The meeting was then adjourned.

GULF COAST CLASSIC

Sep 27-28, 1975

Open

1	Appleberry, Marty AL	2278	w10	w5	w4	d3	w6	4 1/2	1
2	Parsons, John LA	2074	w11	L6	L3	w17	L16	2	11
3	Price, Richard	2062	w12	w8	w2	d1	w4	4 1/2	2
4	Trosclair, Wayne LA	2034	w13	w16	L1	d5	L3	2 1/2	9
5	Bowe, Bruce	1962	w14	L1	w6	d4	d7	3	3
6	Nowe, Charles	1945	w15	w2	L5	w16	L1	3	5
7	Parun, Bernard LA	1922	L16	w9	d12	w11	d5	3	6
8	Wheeler, Webster LA	1790	w17	L3	L16	w13	w9	3	7
9	Vejrosta, Larry AR	1700	w18	L7	d17	w12	L8	2 1/2	10
10	Raymond, Harold Wash.	1754	L1	d14	d11	L18	bye	2	12
11	Woodard, Gunnar	1690	L2	w15	d10	L7	L13	1 1/2	16
12	Galloway, Charles LA	1672	L3	w18	d7	L9	LF	1 1/2	14
13	Beavers, Carl T LA	1697	L4	L17	WF	L8	w11	2	13
14	Doredant, Richard	1797	L5	d10	LF	LF	LF	1/2	17
15	Aronson, Jan LA	1604	L6	L11	L18	LF	LF	0	18
16	Mannsfeld, Suen-Peter AL	unr	w7	L4	w8	L6	w2	3	4
17	McMullin, David AL	unr	L8	w13	d9	L2	L18	1 1/2	15
18	Penny, Michael	1481	L9	L12	w15	w10	w17	3	8

Ametuer

1	Woodard, Laird	1289	L17	w27	w13	w9	w16	4	5
2	Cooper, Terry AL	1288	w18	w11	L14	L16	L12	2	19
3	Hess, Randall	1280	w19	w13	w16	L25	L14	3	11
4	Kerr, Allen	1280	w20	L14	w15	w12	w17	4	4
5	Sells, Claude AL	1330	w21	w15	L25	L29	w23	3	12
6	Hedman, John	1256	w22	L16	w19	L7	w15	3	14
7	Statler, James C FL	1238	w23	L17	w20	w6	d29	3 1/2	7
8	Pope, James O FL	1234	w24	L25	L29	w11	d21	2 1/2	17
9	LaFleur, Barry LA	1223	L25	w24	L32	L1	L28	1	26
10	McLean, John Lee (Rev)	1203	w26	w28	w17	w14	d25	4 1/2	2
11	Giattina, Anthony AL	1202	w27	L2	L12	L8	L20	1	28
12	Jackson, John	1200	L28	w26	w11	L4	w2	3	15
13	Henry, Ed FL	1197	w29	L3	L1	d20	L32	1 1/2	25
14	Fortner, Hugh	1176	w30	w4	w2	L10	w3	4	3
15	Samford, Frank P AL	1195	w31	L5	L4	w18	L6	2	20
16	Wilson, Gerald	1096	w32	w6	L3	w2	L1	3	10
17	Linclon, Ray LA	1058	w1	w7	L10	w28	L4	3	8
18	Miller, Clyde FL	1044	L2	w30	L28	L15	WF	2	22
19	Schonholtz, John	695	L3	w31	L6	L23	L27	1	30
20	Myers, Charles R LA	1210	L4	w23	L7	d13	w11	2 1/2	16
21	McPherson, Leslie LA	1263	L5	L29	w24	w26	d8	2 1/2	18
22	Thomas, David H LA	unr	L6	L32	L26	w24	w30	2	23
23	Pokladnik, Michael	unr	L7	L20	w27	w19	L5	2	21
24	Wydra, Ron J FL	unr	L8	L9	L21	L22	L31	0	32
25	Schuster, Eugene W	**	w9	w8	w5	w3	d10	4 1/2	1
26	Hill, Lyle	unr	L10	L12	w22	L21	LF	1	28
27	Stewart, Roger	unr	L11	L1	L23	w31	w19	2	24
28	Michota, Kenneth	unr	w12	L10	w18	L17	w9	3	13
29	Daniels, Bobby R LA	unr	L13	w21	w8	w5	d7	3 1/2	8
30	Michota, Sindi	unr	L14	L18	w31	L32	L22	1	27
31	Statler, Nichie FL	unr	L15	L19	L30	L27	w24	1	31
32	Parker, Joseph	unr	L16	w22	w9	w30	w13	4	6

** Claims to have 1800+ rating from mid 1960's. No record of rating found.

Booster

1 Goshen, Matthew LA	1597	L17	L21	w24	L9	LF	1	27
2 Fitzsimons, Farncis LA	1590	d18	L32	w29	L8	w23	2 1/2	18
Owens, William, Wyoming	1585	L19	w23	L6	L10	L17	1	25
4 Lazarre, Mark LA	1573	w20	w14	w11	w7	d5	4 1/2	1
5 Lannie, David AL	1570	w21	w17	w12	w31	d4	4 1/2	2
6 Gray, John	1565	L22	w24	w3	w11	w12	4	4
7 Roberson, Bill AL	1558	w23	w19	w22	L4	w26	4	3
8 Sides, Ben L AL	1536	w24	L22	d19	w2	d31	3	10
9 Goodenough, Frank FL	1514	L25	w27	L20	w1	w14	3	14
10 Berger, Marilyn	1512	L26	w28	L21	w3	w25	3	13
11 Merritt, Roy	1511	w27	w25	L4	L6	L21	2	20
12 Killcrease, William	1500	w28	w26	L5	w18	L6	3	8
13 Langdon, James LA	1495	w29	L31	d25	L19	L16	1 1/2	23
14 Farrell, MA	1507	w30	L4	L26	w17	L9	2	21
15 Smith, Allyne	1482	L31	L29	withdrew			0	32
16 Watts, Alvid D	1481	d32	L18	L23	w24	w13	2 1/2	19
17 Scott, Gordon	1477	w1	L5	L18	L14	w3	2	24
18 Moore, Lonnie LA	1462	d2	w16	w17	L12	L20	2 1/2	15
19 Williams, John AL	1456	w3	L7	d8	w13	d22	3	12
20 Smith, James W	1456	L4	w30	w9	d22	w18	3 1/2	5
21 Whatley, DR George AL	1399	L5	w1	w10	L26	w11	3	11
22 Schrade, Thomas	1421	w6	w8	L7	d20	d19	3	7
23 Lee, James G	1407	L7	L3	w16	w29	L2	2	22
24 Datlof, Joseph	1401	L8	L6	L1	L16	w29	1	26
25 Bounds, L J LA	1360	w9	L11	d13	w32	L10	2 1/2	17
26 Nichols, Geoffrey	1361	w10	L12	w14	w21	L7	3	9
27 Ivy, Billy AL	1349	L11	L9	withdrew			0	31
28 Kroone, Richard MN	1332	L12	L10	withdrew			0	29
29 Johnson, William LA	1345	L13	w15	L2	L23	L24	1	28
30 Ramsey, Marcus AL	1329	L14	L20	withdrew			0	30
31 Widerynske, Lesley	1300	w15	w13	w32	L5	d8	3 1/2	6
32 Davis, Ron	1306	d16	w2	L31	L25	WF	2 1/2	16

Ed Issa, pres. MCA
Box 1207
Cleveland, Miss. 38732

Dear sir:

After several years of attempting to organize a match between the states of Mississippi and Louisiana frustration has taken hold. After listening to Miss. chessplayers babble about honor and glory (as opposed to other reasons for playing chess) I find their attitude toward a match most interesting. When given a chance to play for honor (their's and their state's) these self-rightous souls run like hell. Excuses abound, everthing from family comittments (their dog's birthday) to hemeroids.

To make the match more "honorable", the LCA has agreed to play the match anywhere south of, and including, Jackson, Miss. This makes sure that at least 50% of La.'s strong players will not participate due to travel limitations. This seems more along the lines platable to Miss. chessplayers. To date, the LCA has not received a request to leave at home their top ten players, but this would seem in line with the Miss. concept of honor.

Yours in chess,

C.H. Applewhite
pres. LCA

MISSISSIPPI CHESS ASSOCIATION

BY-LAWS

ARTICLE I - NAME

The name of this Organization shall be the Mississippi Chess Association.

ARTICLE II - PURPOSE

The objectives of the Association are:

1. To promote the game of Chess in Mississippi.
2. To encourage and/or sponsor tournaments, matches and other forms of Chess competition.
3. To promote the establishment of local, affiliated clubs.
4. To determine that official Chess activities in Mississippi conform to the regulations of the United States Chess Federation.
5. To sponsor each year a series of competitions leading to the selection of the Mississippi State Chess Champion.
6. To sponsor each year a state speed championship and a junior championship.

ARTICLE III - MEMBERSHIP

1. Membership is open to any interested Chess player, subject to the approval of the Executive Board.
2. There shall be two classes of membership:
 - a. Regular Membership
 - b. Junior Membership - for those under 21 years of age.
3. The dues for membership shall be determined each year by the Executive Board.
4. Dues shall be payable yearly to the Treasurer.
5. Membership in MCA shall be required of all persons playing in any official tournaments or matches sponsored by the MCA, except those persons from a state which has a reciprocal agreement in effect with the MCA.
6. Membership may be terminated by the Association for any conduct not in the best interest of chess.

ARTICLE IV - LOCAL CLUB AFFILIATION

1. Local clubs wishing to sponsor tournaments leading to qualification for the state championship must be affiliated with the Association.
2. A yearly fee as determined by the Executive Board shall be assessed from each affiliated club.
3. A fee of \$5.00 shall be paid to the Association for each qualifying tournament held by an affiliated club.
4. Association income from assessments and fees shall be used for the support of MCA affairs.

ARTICLE V - OFFICERS

1. The Officers of the Association shall be:
 - a. President and USCF Director
 - b. Vice-President
 - c. Secretary-Treasurer
 - d. Editor of the Mississippi Chessletter
 - e. Parliamentarian
2. The President, Vice-President, Secretary and Treasurer shall be elected by the Membership at the yearly business meeting.
3. The Editor and the Parliamentarian shall be appointed by the incoming President.
4. All offices shall be for a term of one year.
5. Any officer may serve more than one term if re-elected or appointed.

ARTICLE VI - DUTIES OF OFFICERS

1. The President and USCF Director shall:
 - a. Preside at all meetings of the Association and the Executive Board.
 - b. Appoint the Editor and Parliamentarian and name all Committees.
 - c. Keep the membership informed of USCF news pertinent to the conduct of chess in Mississippi.
2. The Vice-President shall:
 - a. Preside in the absence of the President.
 - b. Fill the unexpired term in case of vacancy in the office of President.
 - c. Be responsible for advising affiliated clubs.
3. The Secretary-Treasurer shall:
 - a. Keep the minutes of the Association and Executive Board Meetings.
 - b. Maintain such correspondence as may be required by Association business.
 - c. Collect and maintain the dues and all other monies of the Association.
 - d. Have authority, along with the president and one other officer appointed by him, to sign checks and disburse the funds of the Association.
 - e. Present the Association financial statement at the annual business meeting.
4. The Editor shall:
 - a. Publish the Mississippi Chessletter and distribute it to all paid-up members.
 - b. Be responsible for the publicity of the Association.
5. The Parliamentarian shall:
 - a. Advise the presiding officer during the conduct of Association or Executive Board meetings on matters of parliamentary procedure.
 - b. Maintain the By-Laws in properly worded form.
 - c. Advise members of the Association who wish to submit amendments.

ARTICLE VII - EXECUTIVE BOARD

1. The Executive Board shall consist of the elected and appointed officers of the Association, and the Presidents of affiliated clubs or their representatives.
2. The Executive Board shall conduct the business of the Association and recommend changes in the By-Laws, tournament rules, fees and other procedures of the Association, to be approved by the membership.
3. The Executive Board shall meet at least annually and at such other times as called by the President.

ARTICLE VIII - CONDUCT OF MEETINGS

1. All meetings of the Association and the Executive Board shall be governed by Robert's Rules of Order.
2. Business shall be decided by a simple majority of members present and voting.

ARTICLE IX - ELECTIONS

1. Candidates for office shall be recommended by the Executive Board or nominated from the floor during the annual business meeting.
2. No person shall be nominated for any office who has not previously agreed to accept if elected.
3. Elected persons shall take office at the conclusion of the annual business meeting.

ARTICLE X - AMENDMENTS

1. Amendments to the By-Laws may be recommended by the Parliamentarian, the Executive Board, or any five (5) members of the Association.
2. Members wishing to propose amendments or changes in other Association policy shall submit them to the Executive Board prior to their consideration by the membership.
3. Amendments shall require a two-thirds majority of the members present and voting.

A PROPOSAL FOR THE DETERMINATION OF THE MISSISSIPPI STATE CHESS CHAMPIONSHIP
AND THE MISSISSIPPI AMATEUR CHAMPIONSHIP

1. The Miss. Chess Association and its club affiliates may hold qualifying tournaments. All Mississippians entering qualifying tournaments must be members of the MCA. Out-of-state players from states holding mutual card-honoring agreements with the MCA will not be required to join the MCA. All qualifying tournaments must be USCF rated and all must be announced in at least one issue of Chess Life and Review.
2. The MCA itself may hold any number of qualifying tournaments during each yearly cycle, which runs from August to August. Affiliate clubs may hold not more than three tournaments during each yearly cycle. Affiliates will remit to the MCA a fee of \$5.00 for each qualifying tournament held.
3. Qualifying tournaments must be five-round Swiss-system events. Optional Friday night rounds are encouraged. Qualifying tournaments must be open to all rating classifications and may be open to all or open to Mississippians only. [The Mississippi Amateur Championship is the single exception to the first part of this rule.]
4. Qualifying Points (QP's) are awarded on the basis of tournament size, tournament strength, and number of points scored. These points are awarded according to the chart below.

CHART FOR THE DETERMINATION OF THE NO. OF QUALIFYING POINTS

<u>Tournament size</u>	<u>Tournament strength</u>
10-19 = category 7	average rating below 1200 = category E
20-29 = category 6	average rating 1200-1399 = category D
30-39 = category 5	average rating 1400-1599 = category C
40-49 = category 4	average rating 1600-1799 = category B
50-59 = category 3	average rating over 1799 = category A
60-69 = category 2	[unrated players assigned performance ratings to calculate tourney strength]
70 up = category 1	
[tournament size= <u>all</u> players who complete schedules]	

<u>Tournament category</u>	<u>No. of points scored</u>										
	5	4½	4	3½	3	2½	2	1½	1	½	0
1A	25	20	16	13	11	-	-	-	-	-	-
2A	24	19	15	12	10	-	-	-	-	-	-
3A, 1B	23	18	14	11	9	-	-	-	-	-	-
4A, 2B	22	17	13	10	8	-	-	-	-	-	-
5A, 3B, 1C	21	16	12	9	7	-	-	-	-	-	-
6A, 4B, 2C	20	15	11	8	6	-	-	-	-	-	-
7A, 5B, 3C, 1D	19	14	10	7	5	-	-	-	-	-	-
6B, 4C, 2D	18	13	9	6	4	-	-	-	-	-	-
7B, 5C, 3D, 1E	17	12	8	5	3	-	-	-	-	-	-
6C, 4D, 2E	16	11	7	4	2	-	-	-	-	-	-
7C, 5D, 3E	15	10	6	3	1	-	-	-	-	-	-
6D, 4E	14	9	5	2	-	-	-	-	-	-	-
7D, 5E	13	8	4	1	-	-	-	-	-	-	-
6E	12	7	3	-	-	-	-	-	-	-	-
7E	11	6	2	-	-	-	-	-	-	-	-

} QP's

6. On completion of the Miss. Open in June, the 16 players holding the most QP's are invited, through publication of the list of qualifiers in the Miss. Chessletter, to participate in the Mississippi State Chess Championship. The championship tourney, held in August, will be a five-round Swiss-system event. The tournament winner will be awarded the title of Mississippi State Chess Champion. QP's will be assigned for this event as if it were a category 1A tournament. The champion will not be seeded into the next championship tournament.
7. On the same dates and at the same site as the Miss. State Chess Championship tournament, the MCA will sponsor the Miss. Amateur Chess Championship. This event will be a five-round Swiss open to Mississippians only. No player rated over 1799 will be allowed to enter this event. The winner of this tournament will be awarded the title of Miss. Amateur Chess Champion. [No player among the 16 qualifiers for the championship event may play in the amateur event instead, regardless of rating or preference].
8. In the event that one or more of the qualifiers for the championship tournament fail to enter, the tourney will be conducted with those players who do enter as long as the number of entries is an even number. If the number of entries is odd, one player is added. This player will be the person on hand holding the most QP's who desires to play in the championship event.
9. QP's for the Amateur Championship will be assigned on the basis of the regular chart.

A FEW NOTES ABOUT THIS ISSUE
(and the next)

At the MCA Executive Board meeting in Hattiesburg last December, it was decided to hold a general membership meeting at the Greater Jackson Open in February. One of the main topics at this meeting will be the State Championship: how to hold it, and who or what organization should be responsible for any loss it incurs. Other questions will have to do with chess promotion; i.e. should the MCA organize a regular tournament in an area which has not held one recently.

It was felt that the Chessletter could be used as a sounding board for ideas which may be discussed at this meeting, and certainly any proposed By-Law changes should be presented to the membership before the meeting. In this issue is a set of our current By-Laws furnished by our parliamentarian, Judson Farmer, as well as our current Qualifying Point System. Any member with a proposed By-Law change should send it Dr. Farmer within the next two weeks. If necessary he may reword the proposal to make it conform to Parliamentary Procedure, but won't change its basic ideas.

For the next issue anyone wishing to express an opinion, present a proposal which the membership may vote on which is not part of the By-Laws, or express support for (or against) a By-Law change should also send it to Dr. Farmer. We ask that you type it and keep it under 1/2 page.

The February issue will be prepared without any Editorials around the materials which Dr. Farmer will give me. Once he gives me the membership's or the officer's proposed By-Laws and any comments the members give him, the Chessletter will be taken directly to the printer.

In order for us to get out one more issue between now and the business meeting the usual mid-month deadline has been extended to the date stamped on the back. However, if you can't type the usual material which has always been printed in the MCL (games, crosstables, tournament announcements, or local chess news) please submit it at once. We will need to send the Feb. issue to the printer as soon as possible after the deadline, and won't have the time to type it that we usually have.

Jackson Tornado=T Jackson Ladder=L Miss. Chess Congress=C

T L. Woodard-Price 1 c4 g6 2 g3 Bg7 3 Bg2 Nf6 4 Nf3 d5 5 cd Nd5 6 Nc3 e5 7 e4?(Badly and unnecessarily weakens d3 and d4) Ne7! 8 00 Nbc6 9 a3 a5 10 d3 00 11 Qc2 Be6 (Nd4!) 12 Rd1? (In addition to having nowhere to go this rook keeps threatening to get pinned by Bb3. Ng5 or continued development would be better) h6 13 Rb1 b6 (Preparing a later c5) 14 Bd2 (14 b4 prepared by his last move is better.) Nd4 15 Nd4 ed 16 Ne2 c5 17 Be1? (Active defence here is necessary. White can try Nf4 to be followed by b4 with the ideas of controlling d5 and attacking the Black Qside infantry and get a good game.) a4 18 Nc1 Qc7 19 e5? Nd5 20 Bd5 Bd5 21 f4 Bb7 22 b4 Qc6 23 bc Qh1+ 0:1

T Killcrease-Burford 1 PQB4 PK3 2 NQB3 NKB3 3 NB3 PQ4 4 PXP PXP 5 QN3 BK2 6 PN3 00 7 BN2 PQB3 8 Pq4 QB2 9 BB4 BQ3 10 BK5! (Control and/or occupation of K5 in games with a "ram" (two pawns blocking each other) at Q4 and Q5 is very strong, especially with a Knight.) BxB 11 NxB QN2 12 PB4 NxB 13 BPxN NQ2 14 RQB1 QN3 15 PK3 QxQ 16 PxQ (Keith hasn't the strong aversion to doubled pawns common in Miss, though not necessarily to his disadvantage.) PB3 17 PXP RXP 18 KK2 Pn4 19 NQR2 PQR4 20 PQN4 (RXP!) NN3 21 PXP NB5 22 NB3 (Why not PQN4?) 23 BN5+ KK1 24 BB1 RXP 25 PKR3? BQ2? (RxB 26 RxB NxB 27 KxB BXP+) 26 BQ3 BB4 27 BxB NxB 28 PKN4 NXP 29 RB1 RxB+ 30 KxB PN5 31 NQ1 PB4? 32 NK3 PB5 33 RQ1 NK3 34 NxQP RR7 35 RK1 KB2 36 RK2 RR8+ 37 KN2 PN6 38 RB2+ KN3 39 NK7+ KN4? (KR3 draws) 40 RB5+ KR3 41 RR5+ 1:0

C Killcrease-Barrett 1 PQ4 NKB3 2 PQB4 PK3 3 NQB3 BN5 4 NKB3 PQN3 (Patented in the name of J. Barrett) 5 BB4 BN2 6 PK3 NK5 7 QN3 BxN 8 PxB PQ3 9 BQ3 NQ2 10 QB2 (Provoking PKB4 which weakens Black's K3) PKB4 11 QN3 QNB3 12 PQB5 QK2 13 PxQP NXP3 14 00 BxN (NOK5) 15 PxB 00 16 BxN PxB 17 BXP PQ4 18 BR3 PKN4 19 KR1 PKR4 20 QN4 QRK1 21 RKN1 QN2 22 PQB4 PN5 23 BN2 PR5 24 QRQB1 PN6 25 PXP PXP 26 BR3 NR4 27 BN4 RXP? 28 BxR QR3 29 BxN RB1 30 RXP+ KR1 31 QRKN1 1:0

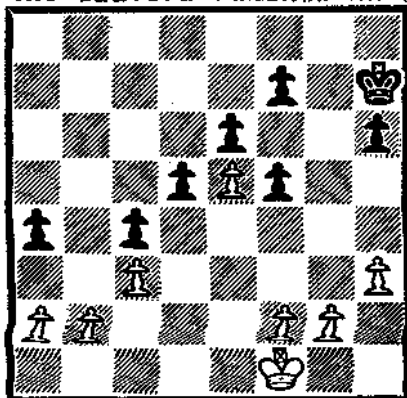
T Price-Killcrease 1 e4 c6 2 d4 d5 3 ed cd 4 c4 Nf6 5 Nc3 e6 6 Nf3 Nbd7 7 Bd3 dc 8 Bc4 Bb4 9 00 Bc3 10 bc 00 11 Bd3 Qc7 12 Qc2 b6 (e5!) 13 Re1! Bb7 14 Ne5 (Again, the occupation of e5, by a Knight) Rac8 15 Re3 Kh2 (Qc3? 16 Bh7+) 16 Bd2 (Ba3) g6 17 Rh3 Ne5 18 de Qe5 19 Re1 Qd5 20 Rf3 (else Qg2?) Rfd8? 21 c4 Qc6 22 Bc3 Kg8 23 Bf6 Rd3 24 Qd3 (24 Rd3?? Qg2?) This one is worth playing over twice to study Richard's efficient (mostly) winning technique. 1:0

L G. Woodard-Harrell 1 PK4 NKB3 2 PK5 NQ4 3 PQ4 PQ3 4 NKB3 BN5 5 BK2 PK3 6 00 BK2 7 PKR3 BR4 8 PB4 NN3 9 NB3 NB3 10 PQ5? (10 PXP PXP 11 PQ5+ Keres) BxN 11 PxN BXP 12 QB2 BKN4 13 NK4 BxB 14 QRxB PB4? (PXP and Black can hold the pawn) 15 PXP PXP 16 BR5+ KQ2 17 NB5+ KK2? (Pxn 18 KRQ1+ Nq4 19 Pxn BXP 20 QXP PB3?) 18 NXP! QKN1 (KxN? 19 RK1+ and BN4) 19 NB4 QN4 20 KRK1+ QK4 (Best. KQ2 21 BN4+ KQ1 22 NK6+) 21 RxQ+ BPxR 22 QB5 QRKB1 (Pxn 23 RK1+ and QB6+) 23 QN5+ KQ2 24 BN4+ KK1 25 NK6 KRN1 26 NXP+ KB2 27 BK6+ 1:0

L G. Woodard-Price 1 e4 c5 2 Nf3 d6 3 d4 cd 4 Nd4 Nf6 5 Nc3 a6 6 Bg5 e6 7 f4 Be7 8 Qf3 Qa5 9 000 Bd7 10 Bc4 Nc6 11 Rhe1 Qc5 12 Nc6 Bc6 13 Bb3 00? (h6!RP) 14 Nd5! ed 15 ed Bd7 16 Re7 Bg4 17 Qg3 Bd1 18 Bf6 g6 19 Kd1 Rfe8 20 f5 Re7 21 Be7 Qd4+ 22 Kc1 Qg1 23 Kd2 Qd4+ Black either gets a purpleperpetual or one of the Bishops if White tries for more. 1:1

I don't believe it's at all coincidental that none of these are up-sets; publishable games seem usually to be so, at least here in The Big J. Thanx for reading.

2nd Starkville Open, Round 5, Board 1 Crawley-Wiggin This was a must win game for Brian Wiggin as he trailed tournament leader Crawley by 1/2 point going into the last round. Despite his efforts the players reached an even endgame.



1 e4 g6 2 d4 Bg7 3 Nf3 d6
4 Nbd2 Nd7 5 c3 Nb6 6 Be2 c6 7 00 d5
8 Re1 Bg4 9 h3 Bf3 10 Bf3 e6 11 Qc2 Ne7
12 Nf1 h6 13 Bf4 00 14 ed5 cd5 15 Be5 Be5
16 Re5 Nc4 17 Re1 Nf5 18 Be2 Rc8 19 Bc4
Rc4 20 Ne3 Rc6 21 Nf5 gf5 22 Re3 Qf6
23 Rg3+ Kh8 24 Qd2 Rcc8 25 Qf4 Kh7 26 R11
Rg8 27 Rhd3 Rge8 28 Qe5 Qe5 29 de5 Rc4
30 Rd4 Rec8 31 Rgd3 a5 32 Kf1 a4 33 Rc4 Rc4
34 Rd4 b5 35 Rc4 bc4 [Diag] 36 Ke2 (OK, but
36 f4 could also be played.) 36 .. Kg6

After 35 .. bc4

Black a win is 38f4: d4: 39 cd? ed 40 g4
Kg6 41 g5 hg5 42 fg5 a3 43 ba3 f4 44a4 c3 45 a5 c2 46 Kd2 f3 47 a6
f2 48 a7 f1Q 49a8Q clQ. After 39 fe d3+ 40 Kd2 Kg6, Black can still
hope for 41 b3?? cb3 42 ab3 a3: White could have also played 37 f4
fe 38 fe Kg6 39 Kf3 Kg5 40 g3 & if h5 41 h4+ =. Black may have
abstained from going into this line because it has little CP [cheapo
potential] if White doesn't need to win and won't stick his neck out.)

37 f4 f6 38 ef Kf6 39 Ke3 e5 40 fe Ke5 41 g3: h5!?: (If
Black needed to draw this move would be a blunder since it allows
K-f4-g5xh5. Correct for White is 42 a3!: which must be played now..
42 .. d4 43 cd Kd5 44 h4 Kd6 45 Kf4 Kd5 46 Kf5 Kd4 47 g4 hg 48 Kg4
Kd3 49 h5 Kc2 50 h6 Kb2 51 h7 c3 52 h8Q Kb3 53 Qd4) 42 h4? Ke6?
(42 .. Kd6 [or Kf6] could still draw at least and maintain a chance
to win. 43 Kf4 Ke6 44 Kg5?? a3: 45 ba d4: and White is in trouble.
White can get a double Queen ending after 43 Kd4 Ke6 44 Kc5 Ke5
45 Kb4 Ke4 46 Ka4 Kf3 47 b4 [Kb4 & Pa2-a8Q is no faster] cb ep
48 ab3 Kg3 49 b4 f4 50 b5 f3 51 b6 f2 52 b7 f1Q 53 b8Q+ ∞. Ano-
ther try for White which also draws is 44 a3 Kf6 45 Kf3= Ke5
46 Ke3 and d4 will at least draw this time.) 43 Kf4+- Kf6 (A
last gasp would be 43 .. Kf7?: hoping for 44 Kf5? d4! etc. Cor-
rect would be 44 Ke5!) 44 a3: (Snuffs out the cheapo and "wins"
a critical tempo.) 44 .. Ke6 45 Kg5 Ke5 46 Kh5 Ke4 47 Kg6 Kd3
48 h5 Kc2 49 h6 Kb2 50 h7 Kc3 51 h8Q+ Kb3 52 Qf8 Kc2 53 Qf5+ Kb2
54 Qd5 c3 55 Qb5+ Ka3 56 Qc4 1:0

Louisiana Open W. Herbert-L. Woodard 1 e4 g6 2 d4 Bg7 3 f4? d6? 4
Nf3 Nf6 5 Bd3 0-0 6 0-0 Re8 7 e5 d:e5 8 f:e5 Nd7 9 e6 f:e6 10 Ng5
B:d4+ 11 Kh1 Nf6 12 c3 Bb6 13 Qe2 e5 14 Bc4+ e6 15 Q:e5 Ng4 16 Qe2
Nf2+ 17 R:f2 B:f2 18 Q:f2 Qd1+ 19 Qg1 Rd8 20 Bf4 Q:g1 21 K:g1 Nc6
22 Nd2 Na5 23 B:e6+ B:e6 24 N:e6 Rd7 25 Ne4 Re7 26 N:c7 R:e4 27
N:a8 R:f4 28 Rf1 Rc4 29 b4 Nc6 30 Nc7 R:c3 31 b5 Nd4 32 Nd5 Rc5 33
Ne7+ Kg7 34 a4 Ne2+ 35 Kf2 Nc3 36 Ra1 Rc7 37 Re1 N:a4 38 Nd5 Rf7+
39 Ke2 Rf5 40 Nc7 Nc3+ 41 Kd2 N:b5 42 Ne6+ Kf6 43 Nf8 Rd5+ 44 Kc2
Rc5+ 45 Kb2 Rf7 46 Ne6 Rf5 47 Nd8+ Kf6 48 Re2 Nd4 49 Rd2 Rb4+ 50
Kc3 Ne6 51 Rf2+ Ke7 52 Nf7 Ng5 53 Kc4 a6 54 Nh6 Re5 55 Ng8+ Kd6 56
Kb4 Ne4 57 Rf7 Rb5+ 58 Kc4 Ng5 59 Re7 Rc5+ 60 Kb4 Rc7 61 Re2 b5 62
Ka5 Ne6 63 K:a6 Nd4 64 Rd2 Kc5 65 Nf6 Rc6+ 66 Kb7 R:f6 0:1

Louisiana Open C. Jones-L. Woodard 1 Nf3 g6 2 g3 Bg7 3 Bg2 d6 4
0-0 e5 5 Nc3 Ne7 6 e4 Nc6 7 d3 0-0 8 Be3 Nd4 9 Ne2 N:f3+ 10 B:f3
d5 11 c3 d:e4 12 B:e4 f5 13 Qb3+ Kh8 14 Bf3 c6 15 d4 e4 16 Bg2 Nd5
17 Nf4 N:f4 18 B:f4 Qe7 19 Re1 Be6 20 Qd1 Qd7 21 Qd2 Re8 22 b3 a5
23 Rd1 a4 24 c4 a:b3 25 a:b3 Ra3 26 Qb2 Rfa8 27 Be5 B:e5 28 d3 a5
Qe7 29 Rd6 Ra2 30 Qd4 R:a5 31 Rd1 c5 32 Qc3 b5 33 Rb6 b4 34 Qd2 Ra1
35 Rd6 R:d1 36 Q:d1 Kg7 37 Qc1 Rd8 38 Qa1 Kf7 39 R:d8 Q:d8 40 Qa7+
Qe7 41 Q:e7+ K:e7 42 h4? (f4!) Bd7 43 g4 Ke6 44 f3 K:e5 45 f:e4 f:e4
46 g5 Kf4 47 Kh2 e3 48 Bf1 Bg4 0:1

POSTAL CHESS

Entries are now being received for the 1976 Mississippi Postal Championship. The entry fee is \$2.50, and the deadline for entries is Jan 31. If you plan to enter this year's event please send your entries in soon. MCA membership is required, but if you have never been the MCA before, you may be eligible for the "free pass." Entries should be sent to

Jimmy Aden
228 Grace St
Clarksdale 38614

The MISSISSIPPI CHESSLETTER is published six times a year by and for the members of the Miss. Chess Assn. Members' contributions are always welcome; games or articles should be sent to your Regional Editor (responsible for covering club news and tournaments your chess club holds), or to either the Games Editor, Rick Johnson, 735 Lawrence Rd, Jackson 39206, or the Central Editor, Warren Porter.

Starting in the April issue we will print the most current rating of all MCA members. The deadline for submitting material for any issue of the MCL is the 15th of the previous month (example, Mar 15 for the April issue), but for the Feb. issue the deadline will be

FEB 3 1976

Members are encouraged to hold on to this issue since parts of it may be referred to in both the Feb issue and at the business meeting to be held in Jackson on Feb. 22.

Owens-Marilyn Berger, Gulf Coast Classic 1 P-QN3 P-K4 2 B-N2 N-QB3 3 P-K3 P-Q4 4 B-N5 B-Q3 5 N-KB3 B-N5 6 00 P-K5! 7 BxP BxP+ 8 KxB BxN 9 BxN+ PxB 10 PxB Q-R5+ 11 K-N2 Q-N4+ 12 K-R2 QxB 13 N-B3 0000 14 PxP? (14 R-KN1) R-Q3 0:1

FIRST CLASS

FIRST CLASS

Return:
Box 12222
Jackson MS 39211

Memberships (\$3, under 21 \$1)
308 Ward Drive
Starkville MS 39579

STEPHEN SPENCER
6009 CEDAR BRUSH DR.
SOUTHAVEN, MS 38671

